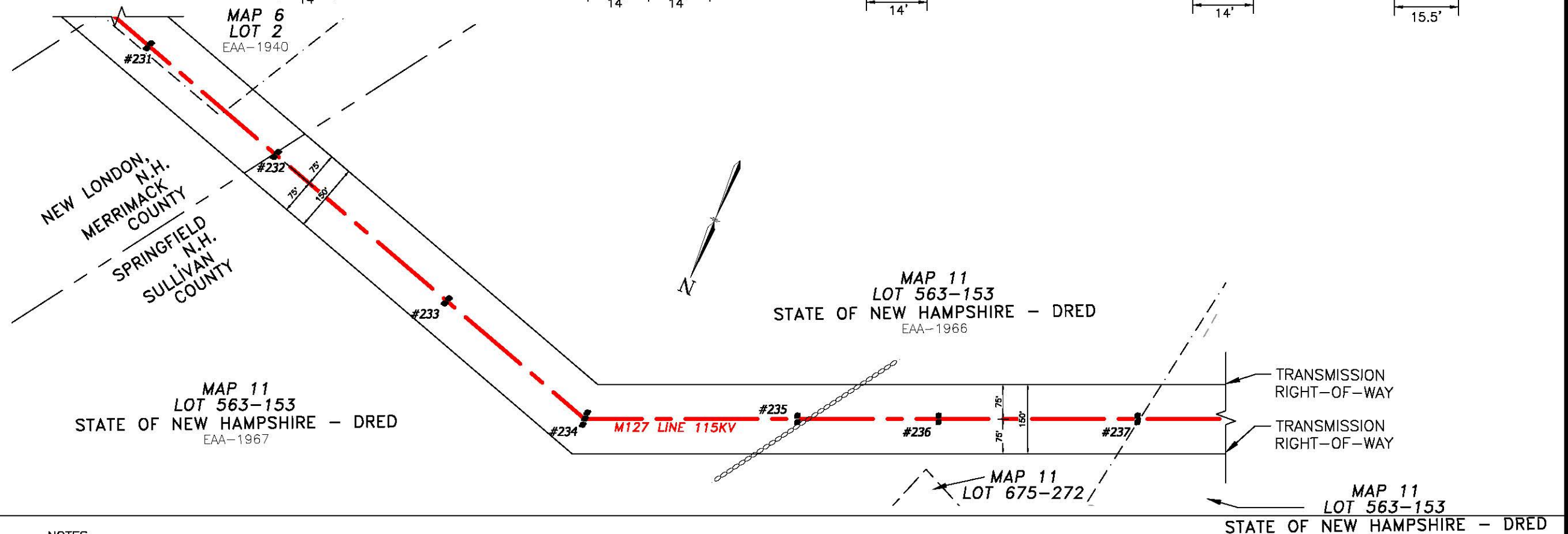
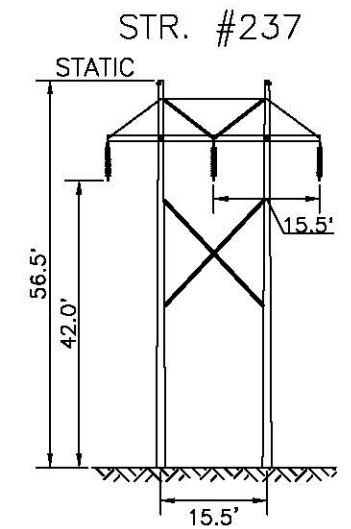
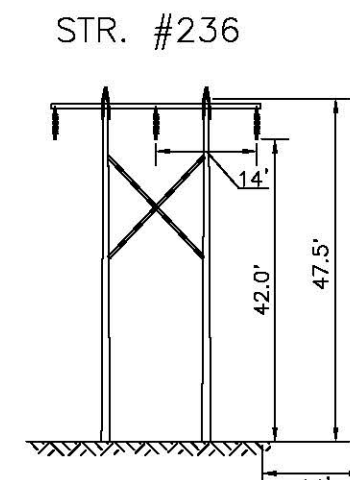
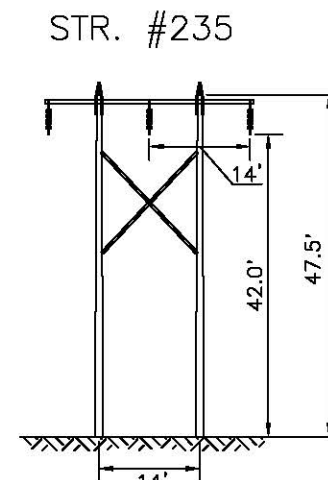
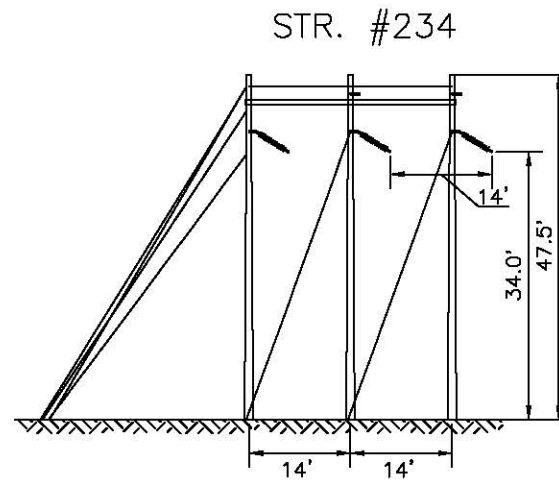
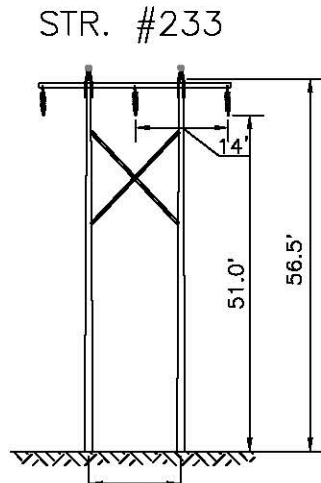
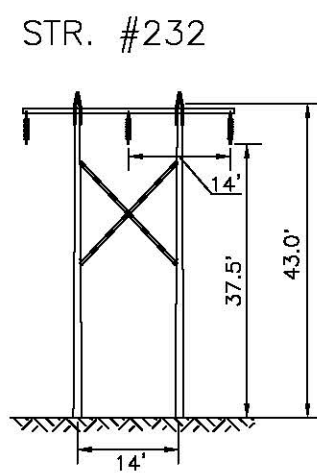
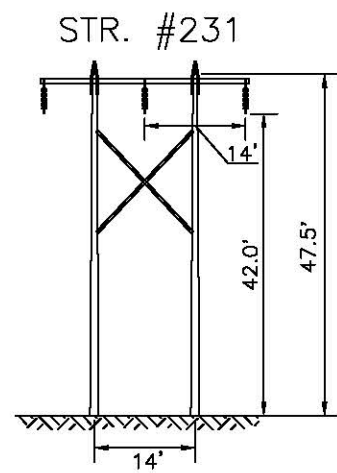


TOWN OF
NEW LONDON & SPRINGFIELD, N.H.



STRUCTURE LOCATION:

- STR. #231 - LAT.= 43°27'7.01"N
LONG.= 71°59'57.693"W
- STR. #232 - LAT.= 43°27'8.086"N
LONG.= 72°0'2.373"W
- STR. #233 - LAT.= 43°27'9.522"N
LONG.= 72°0'8.671"W
- STR. #234 - LAT.= 43°27'10.746"N
LONG.= 72°0'13.754"W
- STR. #235 - LAT.= 43°27'8.898"N
LONG.= 72°0'19.486"W
- STR. #236 - LAT.= 43°27'7.703"N
LONG.= 72°0'23.287"W
- STR. #237 - LAT.= 43°27'6.036"N
LONG.= 72°0'28.659"W

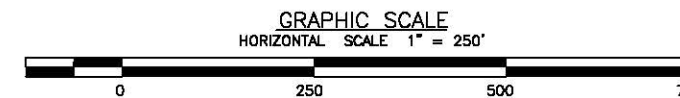
NOTES:

1. VERTICAL DATUM IS NAVD88 IN FEET.
2. COORDINATE SYSTEM IS NEW HAMPSHIRE STATE PLANE NAD 83 US SURVEY FEET.

CABLE SCHEDULE:

| WIRE | # OF CABLES | TYPE | DIA. (IN.) | WEIGHT/1000 FT | CABLE STRENGTH (LBS.) |
|--------------------|-------------|--------------------------|------------|----------------|-----------------------|
| STATIC | 1 | 7#8 ALUMOWELD | 0.385 | 261.8 | 15,930 |
| OPGW | 1 | INCAB OPGW | 0.457 | 245.0 | 11,719 |
| TRANSMISSION COND. | 3 | 795 KCMIL 36/1 ACSR COOT | 1.040 | 804.7 | 16,800 |

PROFILE LEGEND:



| DWG REV | EPN/DESCRIPTION | CONT/PE# | DATE | DRN | CHKD | APPR |
|---------|-------------------|----------|----------|-----|------|------|
| 2 | RE-ISSUED FOR USE | | 01/24/20 | SAL | GEL | BRS |
| 1 | RE-ISSUED FOR USE | | 01/10/20 | NEB | SAL | GEL |
| 0 | ISSUED FOR USE | | 11/28/19 | SAL | NEB | GEL |
| A | ISSUED FOR REVIEW | | 10/28/19 | DRL | SAL | BRS |

EVERSOURCE
ENERGY

LINE M127 115KV TRANSMISSION
STATE LAND CROSSING
NEW LONDON & SPRINGFIELD, N.H.
EXHIBIT #5

| | | |
|-------------------|------------------------------------|--------------------------------------|
| SCALE AS SHOWN | FILE: M12743901-SH07.DWG IMAGE: | DRAWING NO. M12743901-SH07 |
|-------------------|------------------------------------|--------------------------------------|

| | |
|----------|----------|
| T | 2 |
| DRAWN | DRL/TRC |
| ENGINEER | GEL/TRC |
| CHECKED | SAL/TRC |
| APPROVED | BRS/TRC |
| DATE | 10/28/19 |