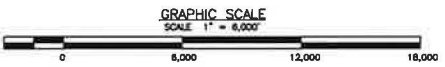


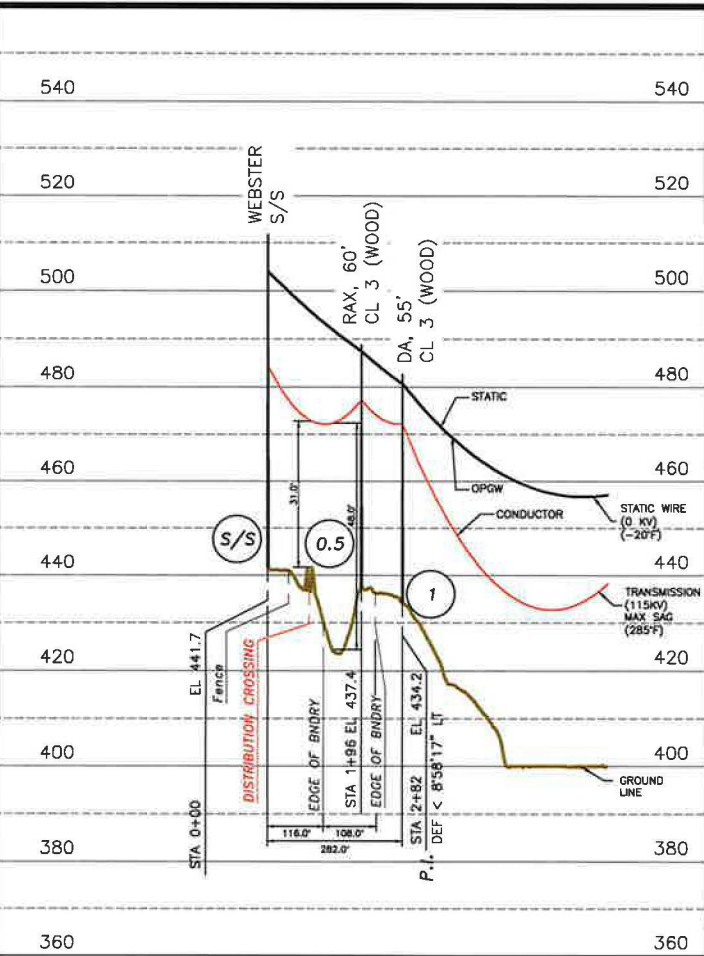
LEGEND:

- DENOTES TRANSMISSION LINE
- DENOTES STRUCTURE NUMBER
- DENOTES ROAD
- DENOTES WATER

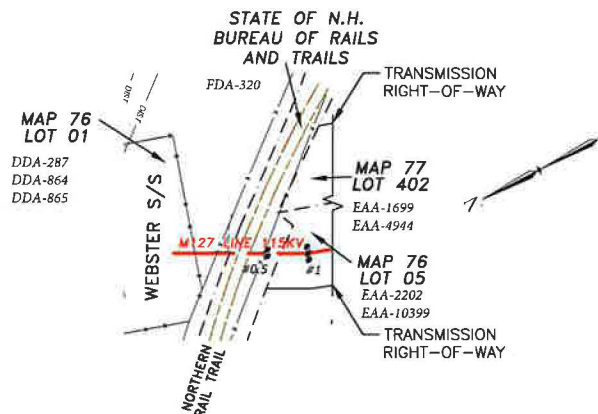
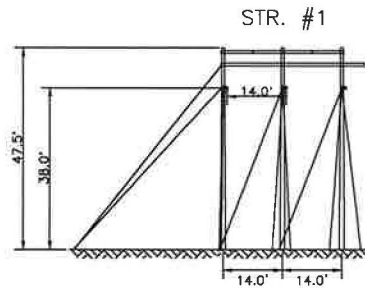
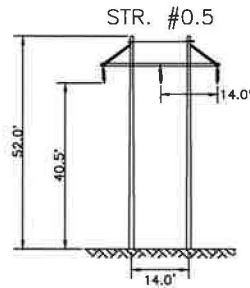


REV	DATE	BY	CHKD	APPD	DESCRIPTION
1					RE-ISSUED FOR USE
0					ISSUED FOR USE

		T	1
		DRAWN NEB/TRC	DATE 7/16/19
LINE M127 115KV TRANSMISSION PERMIT CROSSING DRAWINGS OVERVIEW MAP EXHIBIT #1		CHECKED SEL/TRC	APPROVED GEL/TRC
SCALE: AS SHOWN FILE: M12743901-SH01.DWG		DRAWING NO.: M12743901-SH01	



TOWN OF FRANKLIN, N.H.



- NOTES:
 1. VERTICAL DATUM IS NAVD88 IN FEET.
 2. COORDINATE SYSTEM IS NEW HAMPSHIRE STATE PLANE NAD 83 US SURVEY FEET.

STRUCTURE LOCATION:

STR. #0.5 - LAT. = 43°27'18.916"N
 LONG. = 71°40'28.126"W
 STR. #1 - LAT. = 43°27'18.169"N
 LONG. = 71°40'28.673"W

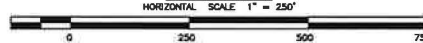
CABLE SCHEDULE:

WIRE	# OF CABLES	TYPE	DIA. (IN.)	WEIGHT/1000 FT	CABLE STRENGTH (LBS.)
STATIC	1	7#8 ALUMOWELD	0.385	261.8	15,930
OPGW	1	INCA8 OPGW	0.457	245.0	11,719
TRANSMISSION COND.	3	795 KCML 36/1 ACSR COOT	1.040	804.7	16,800

PROFILE LEGEND:



GRAPHIC SCALE



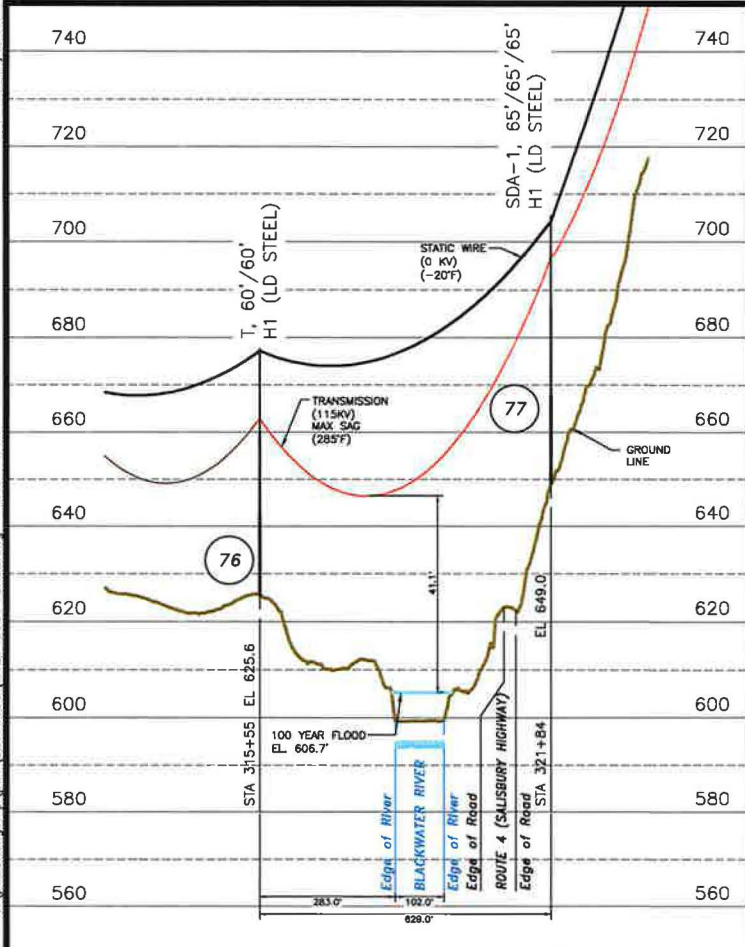
REV	DATE	BY	CHKD	APPR	DESCRIPTION
D	01/21/20	SAL	GEL	BRS	ISSUED FOR USE
A	01/10/20	SAL	NEB	BRS	ISSUED FOR REVIEW



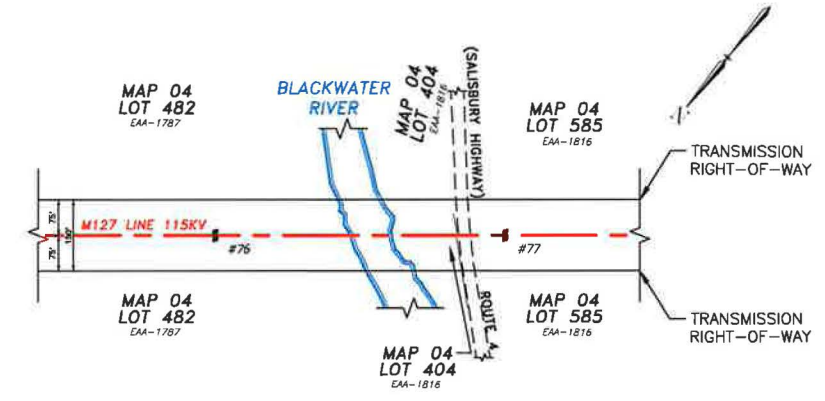
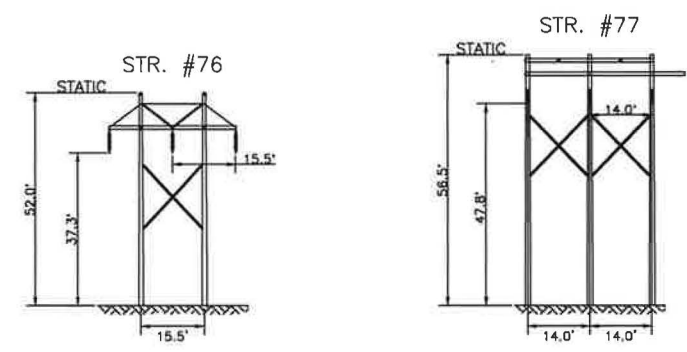
LINE M127 115KV TRANSMISSION
 STATE LAND CROSSING
 FRANKLIN, N.H.
 EXHIBIT #2

T	D
Drawn	SAL/TRC
Engineer	GEL/TRC
Checked	NEB/TRC
Approved	BRS/TRC
Date	01/03/20

SCALE: AS SHOWN
 FILE: M12743901-SH08.DWG
 DRAWING NO.: M12743901-SH08



TOWN OF ANDOVER, N.H.



NOTES:
 1. VERTICAL DATUM IS NAVD88 IN FEET.
 2. COORDINATE SYSTEM IS NEW HAMPSHIRE STATE PLANE NAD 83 US SURVEY FEET.

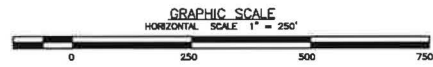
STRUCTURE LOCATION:

STR. #76 - LAT.= 43°25'37.572"N
 LONG.= 71°46'53.944"W
 STR. #77 - LAT.= 43°25'33.565"N
 LONG.= 71°47'0.46"W

CABLE SCHEDULE:

WIRE	# OF CABLES	TYPE	DIA. (IN.)	WEIGHT/1000 FT	CABLE STRENGTH (LBS.)
STATIC	1	7#8 ALUMOWELD	0.385	261.8	15,930
OPGW	1	INCA8 OPGW	0.457	245.0	11,719
TRANSMISSION COND.	3	795 KCMIL 36/1 ACSR COOT	1.040	804.7	16,800

PROFILE LEGEND:



REV	DATE	BY	CHKD	APPD	DESCRIPTION
4	01/21/20	SAL	DEL	BRS	RE-ISSUED FOR USE
3	01/20/20	NEB	SAL	DEL	RE-ISSUED FOR USE
2	11/25/19	SAL	NEB	DEL	RE-ISSUED FOR USE
1	10/13/19	JAO	SAL	DEL	RE-ISSUED FOR USE
0	09/23/19	SAL	NEB	DEL	ISSUED FOR USE
A	08/16/19	SAL	NEB	BRS	ISSUED FOR REVIEW

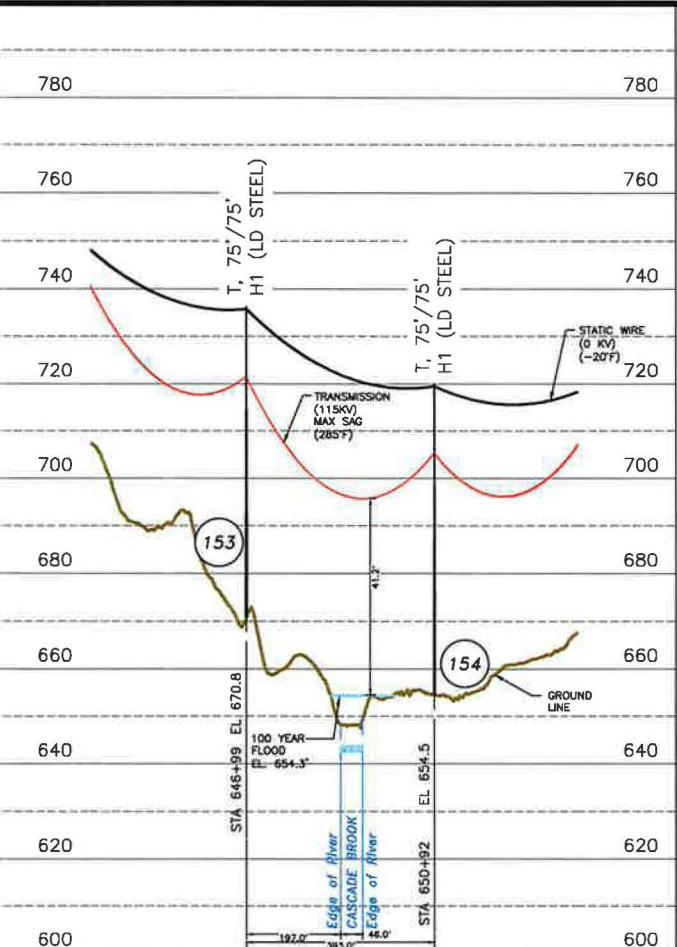
EVERSOURCE ENERGY

LINE M127 115KV TRANSMISSION
 BLACKWATER RIVER WATERBODY CROSSING
 ANDOVER, N.H.
 EXHIBIT #3

DRAWING NO. M12743901-SH02	DATE 07/01/19
SCALE AS SHOWN	FILE: M12743901-SH02.DWG

ES VER: 12/2016

1/15/2020 4:55 PM - Slessard - C:\pwworking\p\1\02576959\M12743901-SH03.dwg - M127-SH03



STRUCTURE LOCATION:

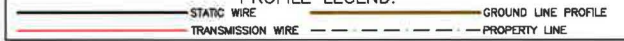
STR. #153 - LAT.= 43°25'31.014"N
LONG.= 71°53'43.937"W

STR. #154 - LAT.= 43°25'31.894"N
LONG.= 71°53'49.127"W

CABLE SCHEDULE:

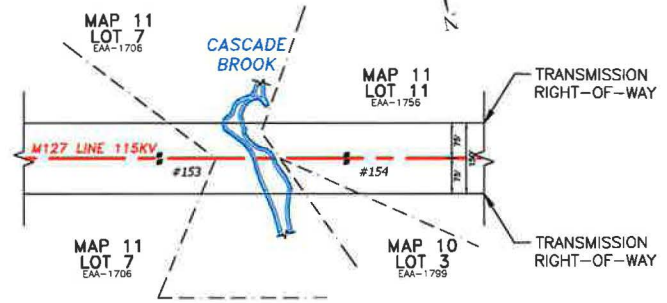
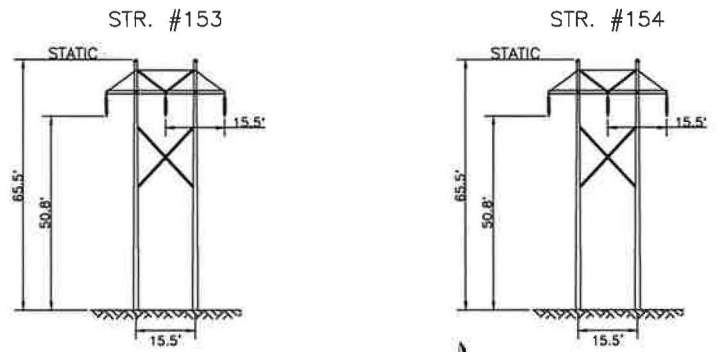
WIRE	# OF CABLES	TYPE	DIA. (IN.)	WEIGHT/1000 FT	CABLE STRENGTH (LBS.)
STATIC	1	7#8 ALUMOWELD	0.385	261.8	15,930
OPGW	1	INCOB OPGW	0.457	245.0	11,719
TRANSMISSION COND.	3	795 KCMIL 36/1 ACSR COOT	1.040	804.7	16,800

PROFILE LEGEND:

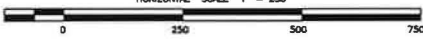


NOTES:
1. VERTICAL DATUM IS NAVD88 IN FEET.
2. COORDINATE SYSTEM IS NEW HAMPSHIRE STATE PLANE NAD 83 US SURVEY FEET.

TOWN OF WILMOT, N.H.



GRAPHIC SCALE



REV	DATE	DESCRIPTION	BY	CHKD	APPV
4	01/24/20	RE-ISSUED FOR USE	SAL	DEL	ERS
3	01/19/20	RE-ISSUED FOR USE	NEB	SAL	DEL
2	11/29/19	RE-ISSUED FOR USE	SAL	NEB	DEL
1	10/25/19	RE-ISSUED FOR USE	AJD	SAL	DEL
0	08/23/18	ISSUED FOR USE	SAL	NEB	DEL
A	08/18/18	ISSUED FOR REVIEW	SAL	NEB	ERS

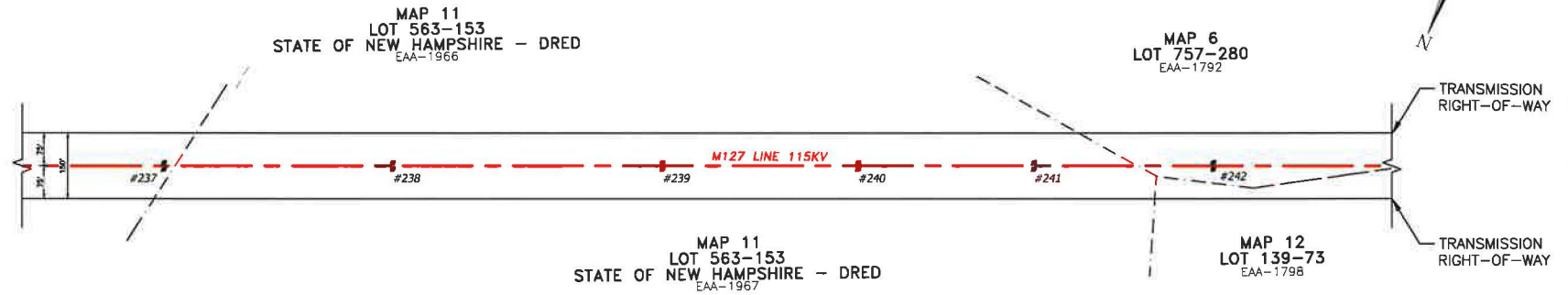
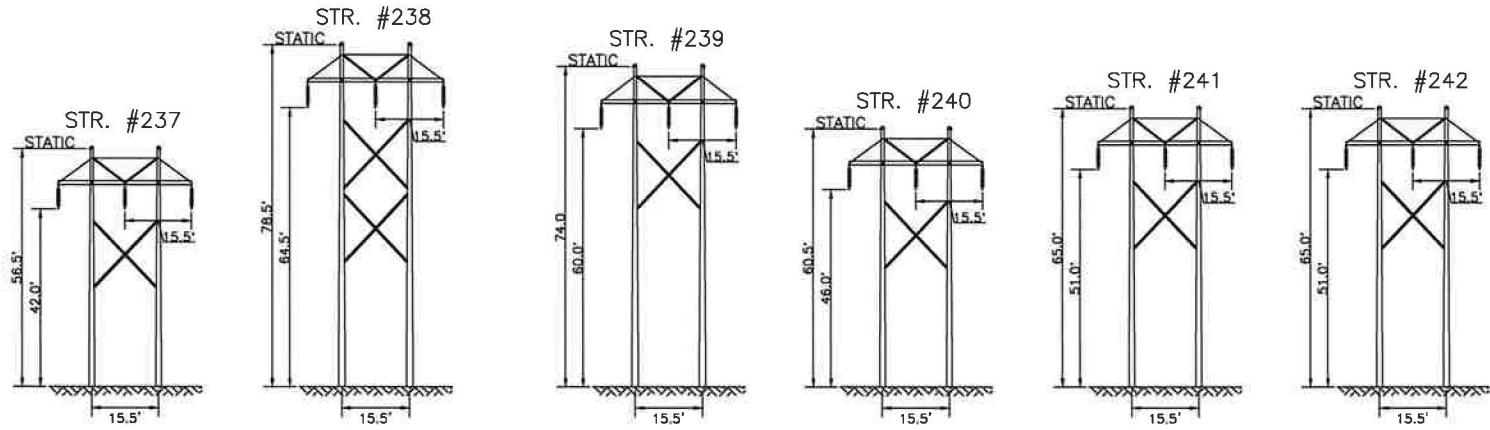


LINE M127 115KV TRANSMISSION
CASCADE BROOK WATERBODY CROSSING
WILMOT, N.H.
EXHIBIT #4

T	4
DESIGN	SAL/TRC
DRAWN	GEL/TRC
CHECKED	NEB/TRC
APPROVED	BRS/TRC
DATE	07/01/19

SCALE: AS SHOWN
FILE: M12743901-SH03.DWG
DRAWING NO.: M12743901-SH03

TOWN OF
SPRINGFIELD, N.H.



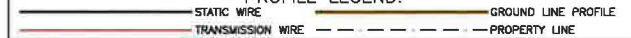
STRUCTURE LOCATION:

- STR. #237 - LAT.= 43°27'6.036"N
LONG.= 72°0'28.659"W
- STR. #238 - LAT.= 43°27'4.1"N
LONG.= 72°0'34.861"W
- STR. #239 - LAT.= 43°27'1.719"N
LONG.= 72°0'42.488"W
- STR. #240 - LAT.= 43°27'0.068"N
LONG.= 72°0'47.776"W
- STR. #241 - LAT.= 43°26'58.280"N
LONG.= 72°0'53.502"W
- STR. #242 - LAT.= 43°26'56.849"N
LONG.= 72°0'58.087"W

CABLE SCHEDULE:

WIRE	# OF CABLES	TYPE	DIA. (IN.)	WEIGHT/1000 FT	CABLE STRENGTH (LBS.)
STATIC	1	7#8 ALUMOWELD	0.385	261.8	15,930
OPGW	1	INCAB OPGW	0.457	245.0	11,719
TRANSMISSION COND.	3	795 KCMIL 36/1 ACSR COOT	1.040	804.7	16,800

PROFILE LEGEND:



NOTES:

1. VERTICAL DATUM IS NAVD88 IN FEET.
2. COORDINATE SYSTEM IS NEW HAMPSHIRE STATE PLANE NAD 83 US SURVEY FEET.

GRAPHIC SCALE
HORIZONTAL SCALE 1" = 250'



NO.	REV.	DESCRIPTION	DATE	BY	CHKD	APPD
3		RE-ISSUED FOR USE	01/24/20	SAL	GEL	BRS
2		RE-ISSUED FOR USE	01/18/20	NEB	SAL	GEL
1		RE-ISSUED FOR USE	11/29/19	SAL	NEB	GEL
0		ISSUED FOR USE	10/19/19	AJD	SAL	GEL
0		ISSUED FOR REVIEW	08/20/19	SAL	GEL	BRS

EVERSOURCE ENERGY

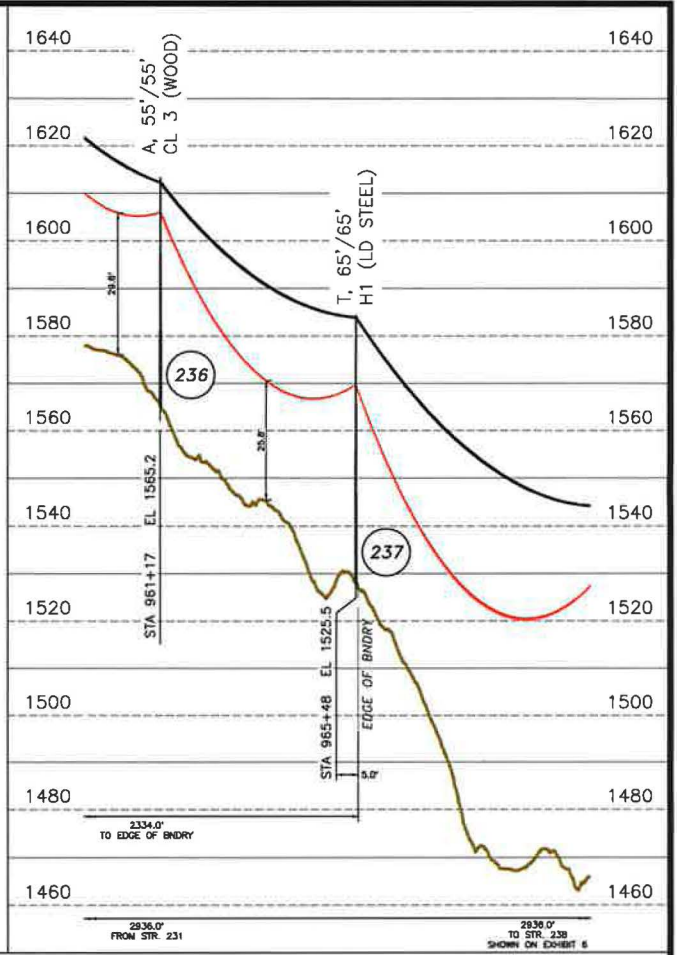
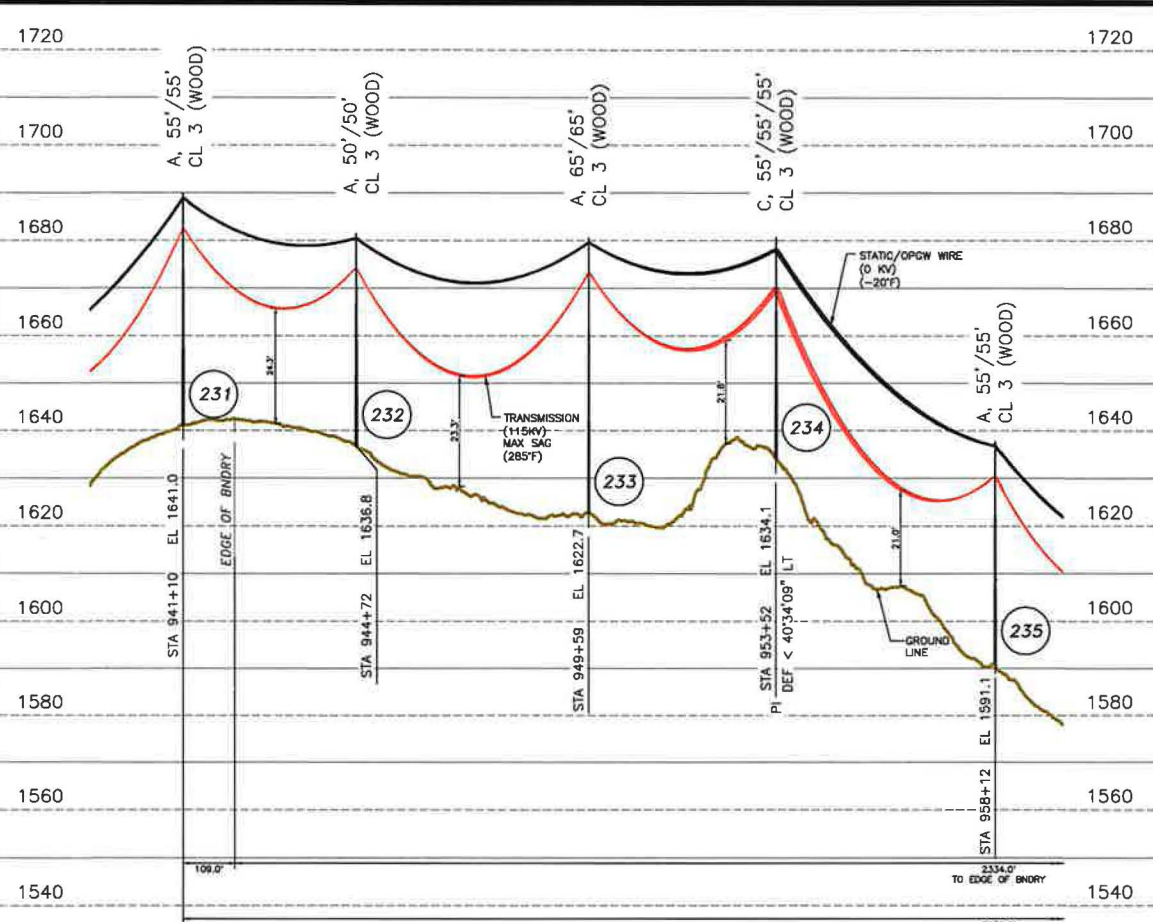
LINE M127 115KV TRANSMISSION
STATE LAND CROSSING
SPRINGFIELD, N.H.
EXHIBIT #8

SCALE AS SHOWN	FILE: M12743901-SH05.DWG	DRAWING NO. M12743901-SH05
DATE: 09/17/19		DATE: 09/17/19

ES VER: 12/2016

C:\pwworking\camp\pwt\12743901-SH06.dwg - M127-SH06

1/15/2020 5:00 PM - Slessard - C:\pwworking\camp\pwt\12743901-SH06.dwg



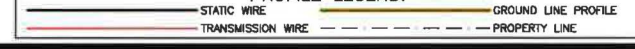
STRUCTURE LOCATION:

- STR. #231 - LAT. = 43°27'7.01"N
LONG. = 71°59'57.693"W
- STR. #232 - LAT. = 43°27'8.086"N
LONG. = 72°0'2.373"W
- STR. #233 - LAT. = 43°27'9.522"N
LONG. = 72°0'8.671"W
- STR. #234 - LAT. = 43°27'10.746"N
LONG. = 72°0'13.754"W
- STR. #235 - LAT. = 43°27'8.898"N
LONG. = 72°0'19.486"W
- STR. #236 - LAT. = 43°27'7.703"N
LONG. = 72°0'23.287"W
- STR. #237 - LAT. = 43°27'6.036"N
LONG. = 72°0'28.659"W

CABLE SCHEDULE:

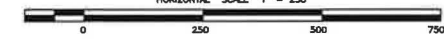
WIRE	# OF CABLES	TYPE	DIA. (IN.)	WEIGHT/1000 FT	CABLE STRENGTH (LBS.)
STATIC	1	7#8 ALUMOWELD	0.385	261.8	15,930
OPGW	1	INCA8 OPGW	0.457	245.0	11,719
TRANSMISSION COND.	3	795 KCMIL 36/1 ACSR COOT	1.040	804.7	16,800

PROFILE LEGEND:



NOTES:

1. VERTICAL DATUM IS NAVD88 IN FEET.
2. COORDINATE SYSTEM IS NEW HAMPSHIRE STATE PLANE NAD 83 US SURVEY FEET.



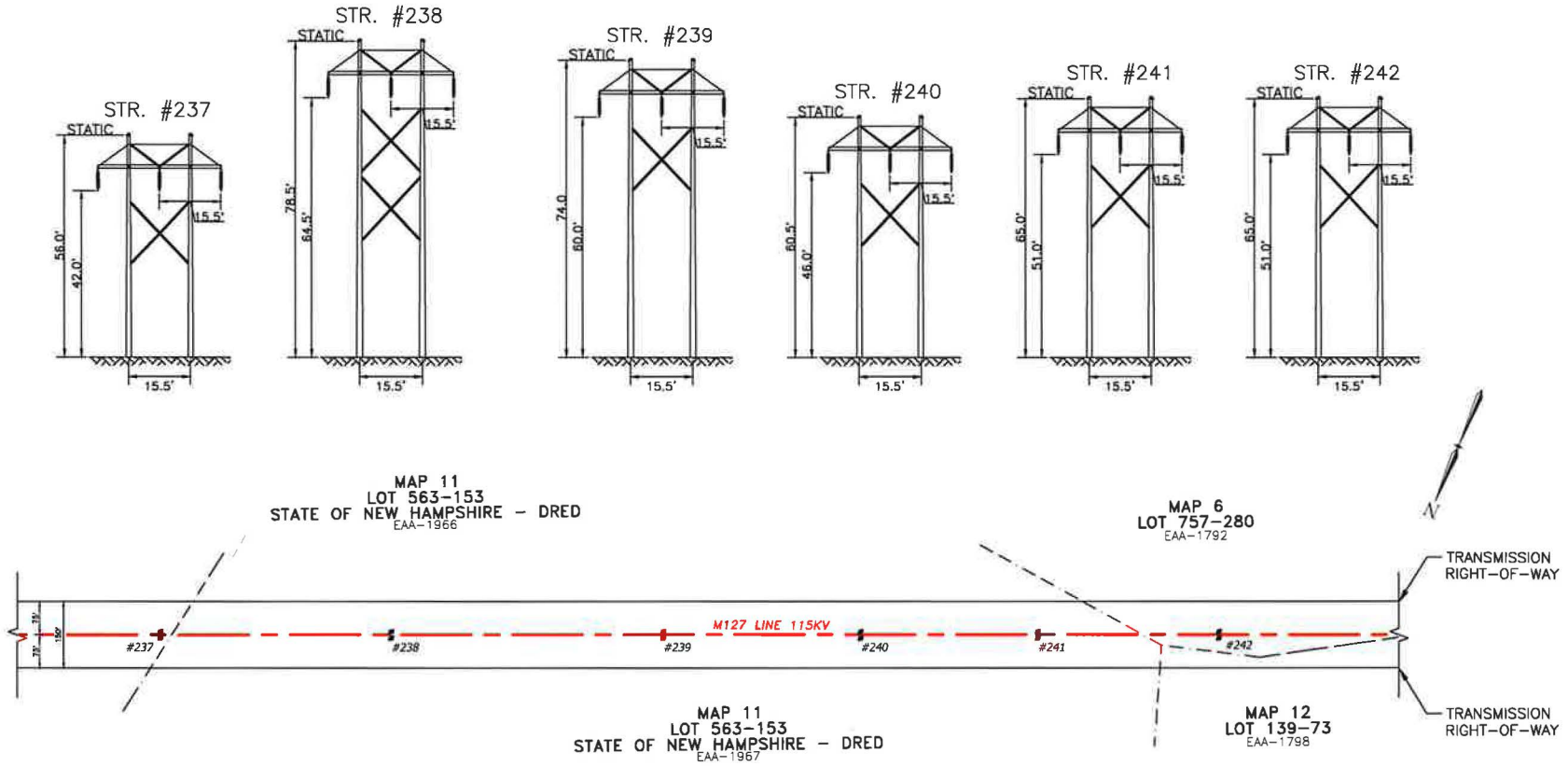
DWG REV	DATE	DESCRIPTION	BY	CHKD	APPD
3	01/24/20	RE-ISSUED FOR USE	SAL	GEL	BRS
1	01/19/20	RE-ISSUED FOR USE	HEB	SAL	GEL
0	11/28/19	ISSUED FOR USE	SAL	HEB	GEL
A	10/28/19	ISSUED FOR REVIEW	DRB	SAL	BRS

EVERSOURCE ENERGY

LINE M127 115KV TRANSMISSION
STATE LAND CROSSING
NEW LONDON & SPRINGFIELD, N.H.
EXHIBIT #5

SCALE: AS SHOWN	FILE: M12743901-SH06.DWG
DRAWING NO. M12743901-SH06	DATE: 10/28/19

TOWN OF
SPRINGFIELD, N.H.



STRUCTURE LOCATION:

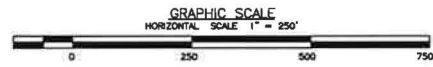
STR. #237	- LAT. = 43°27'6.036"N LONG. = 72°0'28.659"W
STR. #238	- LAT. = 43°27'4.1"N LONG. = 72°0'34.861"W
STR. #239	- LAT. = 43°27'1.719"N LONG. = 72°0'42.488"W
STR. #240	- LAT. = 43°27'0.068"N LONG. = 72°0'47.776"W
STR. #241	- LAT. = 43°26'58.280"N LONG. = 72°0'53.502"W
STR. #242	- LAT. = 43°26'56.849"N LONG. = 72°0'58.087"W

CABLE SCHEDULE:

WIRE	# OF CABLES	TYPE	DIA. (IN.)	WEIGHT/1000 FT	CABLE STRENGTH (LBS.)
STATIC	1	7#8 ALUMOWELD	.0.385	261.8	15,930
OPGW	1	INCOB OPGW	0.457	245.0	11,719
TRANSMISSION COND.	3	795 KCMIL 36/1 ACSR COOT	1.040	804.7	16,800



NOTES:
 1. VERTICAL DATUM IS NAVD88 IN FEET.
 2. COORDINATE SYSTEM IS NEW HAMPSHIRE STATE PLANE NAD 83 US SURVEY FEET.



REV	DATE	BY	CHKD	APPD	DESCRIPTION
3	01/24/20	SAL	GEL	BRS	RE-ISSUED FOR USE
2	01/25/20	NEB	SAL	GEL	RE-ISSUED FOR USE
1	11/29/19	SAL	NEB	GEL	RE-ISSUED FOR USE
0	10/15/19	JAD	SAL	GEL	ISSUED FOR REVIEW
A	08/26/19	SAL	GEL	BRS	ISSUED FOR REVIEW

EVERSOURCE ENERGY

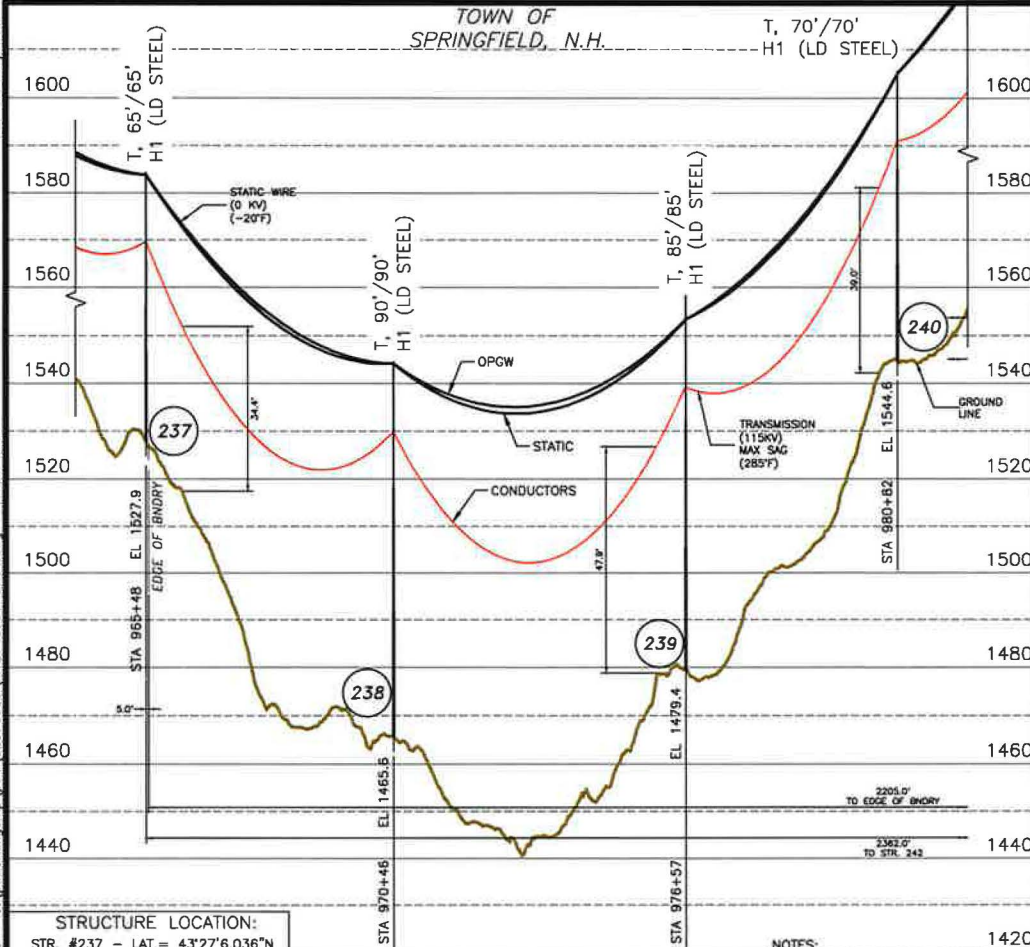
LINE M127 115KV TRANSMISSION
 STATE LAND CROSSING
 SPRINGFIELD, N.H.
 EXHIBIT #6

T	3
OWNER	SAL/TRC
ENGINEER	GEL/TRC
CHECKED	GEL/TRC
APPROVED	BRS/TRC
DATE	09/17/19

SCALE: AS SHOWN
 FILE: M12743901-SH05.DWG
 DRAWING NO.: M12743901-SH05

ES VER: 12/2016

1/15/2020 4:50 PM - Slessard - C:\pwworking\mp\pw\122576959\M12743901-SH04.dwg - M127-SH04



STRUCTURE LOCATION:

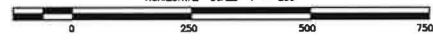
STR. #237	- LAT. = 43°27'6.036"N LONG. = 72°0'28.659"W
STR. #238	- LAT. = 43°27'4.17"N LONG. = 72°0'34.861"W
STR. #239	- LAT. = 43°27'1.719"N LONG. = 72°0'42.488"W
STR. #240	- LAT. = 43°27'0.068"N LONG. = 72°0'47.776"W
STR. #241	- LAT. = 43°26'58.280"N LONG. = 72°0'53.502"W
STR. #242	- LAT. = 43°26'56.849"N LONG. = 72°0'58.087"W

CABLE SCHEDULE:

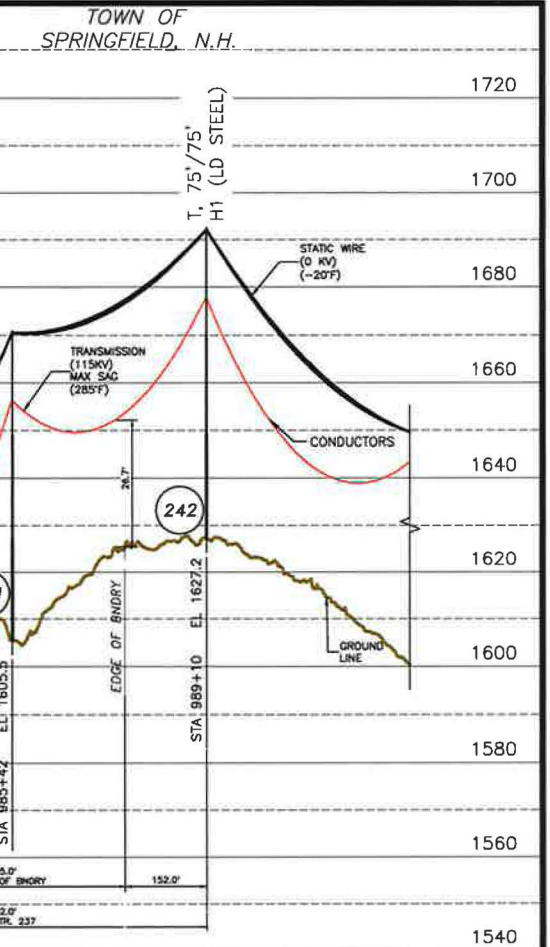
WIRE	# OF CABLES	TYPE	DIA. (IN.)	WEIGHT/1000 FT	CABLE STRENGTH (LBS.)
STATIC	1	7#8 ALUMOWELD	0.385	261.8	15,930
OPGW	1	INCA8 OPGW	0.457	245.0	11,719
TRANSMISSION COND.	3	795 KCMIL 36/1 ACSR COOT	1.040	804.7	16,800



NOTES:
 1. VERTICAL DATUM IS NAVD88 IN FEET.
 2. COORDINATE SYSTEM IS NEW HAMPSHIRE STATE PLANE NAD 83 US SURVEY FEET.
 GRAPHIC SCALE
 HORIZONTAL SCALE 1" = 250'



REV	DESCRIPTION	DATE	BY	CHKD	APPR
3	RE-ISSUED FOR USE	01/24/20	SAL	GEL	BRS
2	RE-ISSUED FOR USE	01/15/20	HEB	SAL	GEL
1	RE-ISSUED FOR USE	11/28/19	SAL	HEB	GEL
0	ISSUED FOR USE	10/15/19	JUD	SAL	GEL
A	ISSUED FOR REVIEW	08/26/19	SAL	GEL	BRS



EVERSOURCE ENERGY

LINE M127 115KV TRANSMISSION
 STATE LAND CROSSING
 SPRINGFIELD, N.H.
 EXHIBIT #6

T	3
DRAWN	SAL/TRC
ENGINEER	GEL/TRC
CHECKED	GEL/TRC
APPROVED	BRS/TRC
DATE	09/17/19

SCALE: AS SHOWN
 FILE: M12743901-SH04.DWG
 DRAWING NO. M12743901-SH04