

# STATE OF NEW HAMPSHIRE

## Inter-Department Communication

**DATE:** May 21, 2020

**AT (OFFICE):** NHPUC

**FROM:** Paul Kasper *PKK*  
Assistant Director – Safety Division

**SUBJECT:** Docket No. DE 20-011 Public Service New Hampshire d/b/a  
Eversource Energy  
Petition for a License to Construct and Maintain Electric Lines over and  
across the Isinglass River in the Town of Strafford and Land Owned by  
the State in the Towns of Rochester and Raymond, New Hampshire

### **Staff Recommendation Revision**

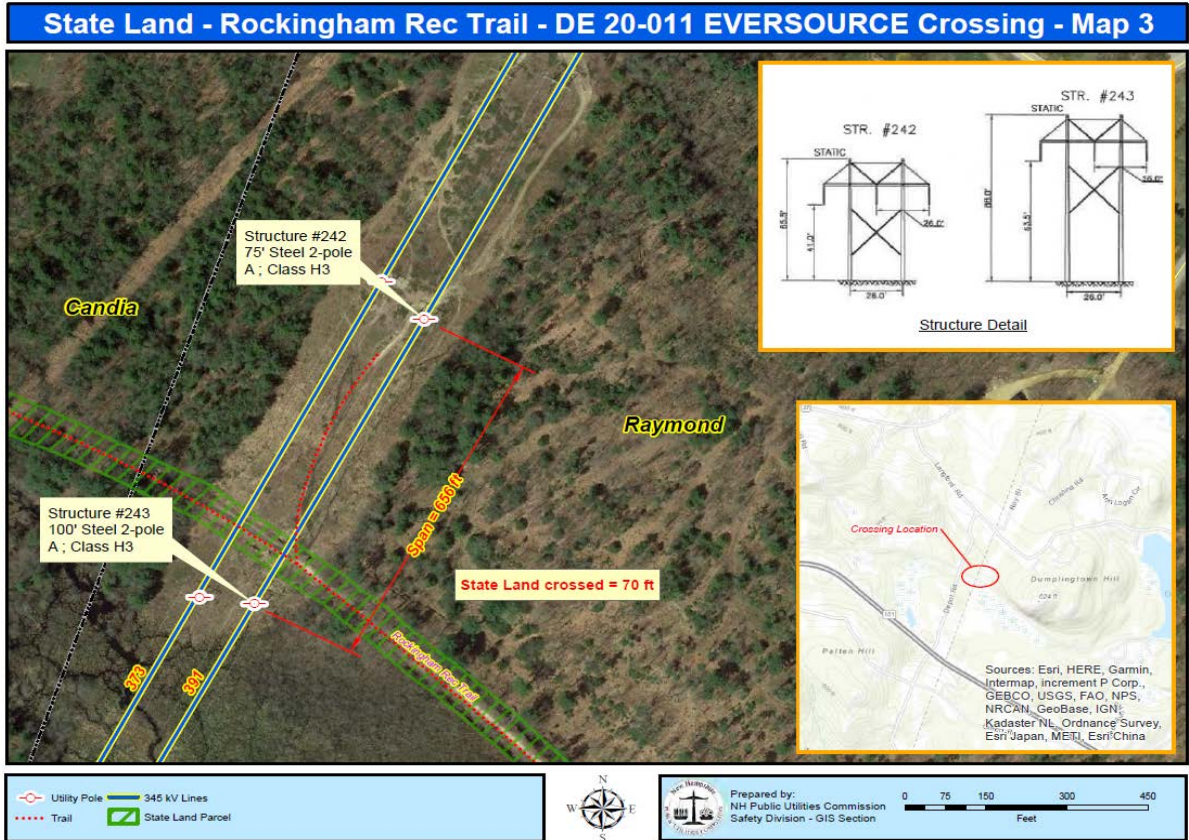
**TO:** Debra Howland, Executive Director  
Thomas Frantz, Director, Electric Division  
Richard Chagnon, Assistant Director, Electric Division  
Mary Schwarzer, Staff Attorney, Legal Division

**CC:** Randall Knepper, Director - Safety Division

The Safety Division's review of the above Staff Recommendation dated May 01, 2020 identified the following that needs revising.

- 1) Reference in the first paragraph of Section 1 Petition contents and History "This is a project to modify or rebuild (6) six structures on its existing 391 transmission line. No conductors, shield wire or neutral wire will be replaced in the project. should have read "This is a project to modify or rebuild (5) five structures on its existing 391 transmission line. No conductors, shield wire or neutral wire will be replaced in the project"
- 2) Reference in the fourth paragraph of page 2 " Structure # 22 will be constructed with 2-95 ft.(OAL) H3 LD steel poles The structure will have conductors for the 345 kv 391 transmission line consisting of (3) 850.8 kcmil ACSR 45/7 cables and (1) 7#8 Alumoweld Static wire." should have read "Structure # 22 will not be modified or rebuilt in this project and is constructed with 2-95 ft.(OAL) H3 wood poles The structure has conductors for the 345 kv 391 transmission line consisting of (3) 850.8 kcmil ACSR 45/7 cables and (1) 7#8 Alumoweld Static wire."

- 3) Reference in the third paragraph of page 3 “In its petition, ES provides sufficient detail to show how the required clearance from the conductors to the land surface will be maintained at (34.5 feet) over the surface of the state owned land in the Town of Rochester, New Hampshire.” Should have read ” In its petition, ES provides sufficient detail to show how the required clearance from the conductors to the land surface will be maintained at (34.5 feet) over the surface of the state owned land in the Town of Raymond, New Hampshire.
  
- 4) Revised Attachment C Showing corrected Crossing Location Map insert



**Figure 1:** 345kV line, designated as the 391 Transmission Line, is a span of approximately 656 feet between structures # 242 and # 243, across State land in the Town of Raymond, NH. State owned land is shown above as green hash marks

Executive.Director@puc.nh.gov  
amanda.noonan@puc.nh.gov  
catherine.marsellos@puc.nh.gov  
Erik.newman@eversource.com  
lynn.fabrizio@puc.nh.gov  
Mary.Schwarzer@puc.nh.gov  
ocalitigation@oca.nh.gov  
Paul.Kasper@puc.nh.gov  
randy.knepper@puc.nh.gov  
richard.chagnon@puc.nh.gov  
susan.gagne@puc.nh.gov  
tom.frantz@puc.nh.gov