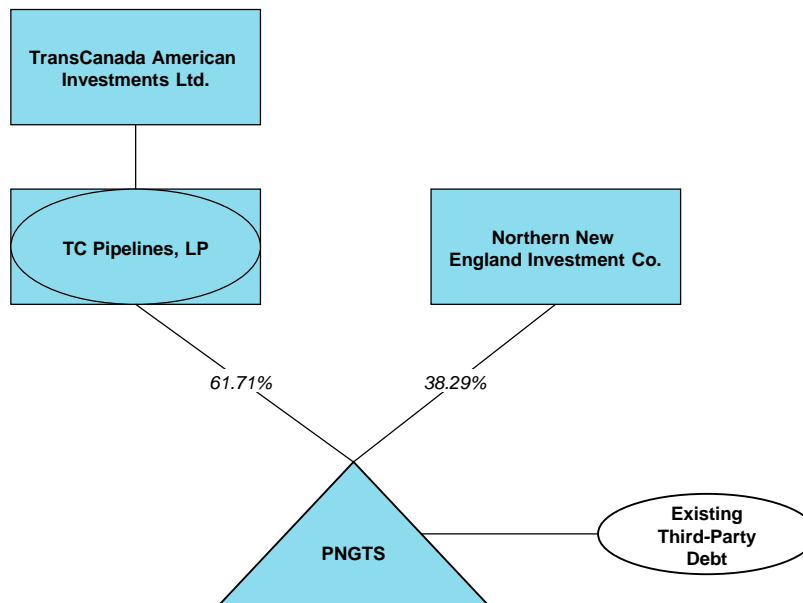


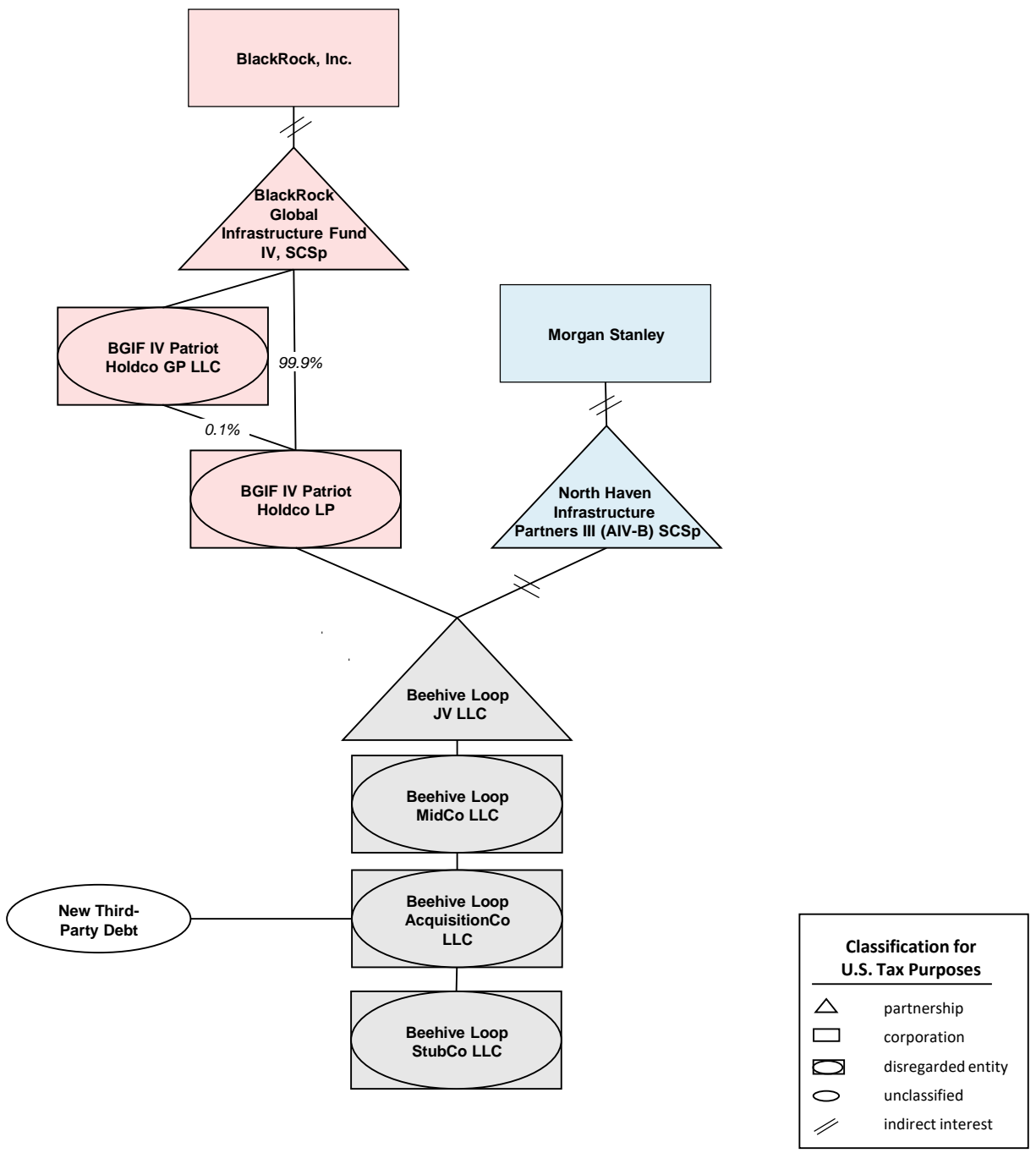
Pre-Closing Structure: Target



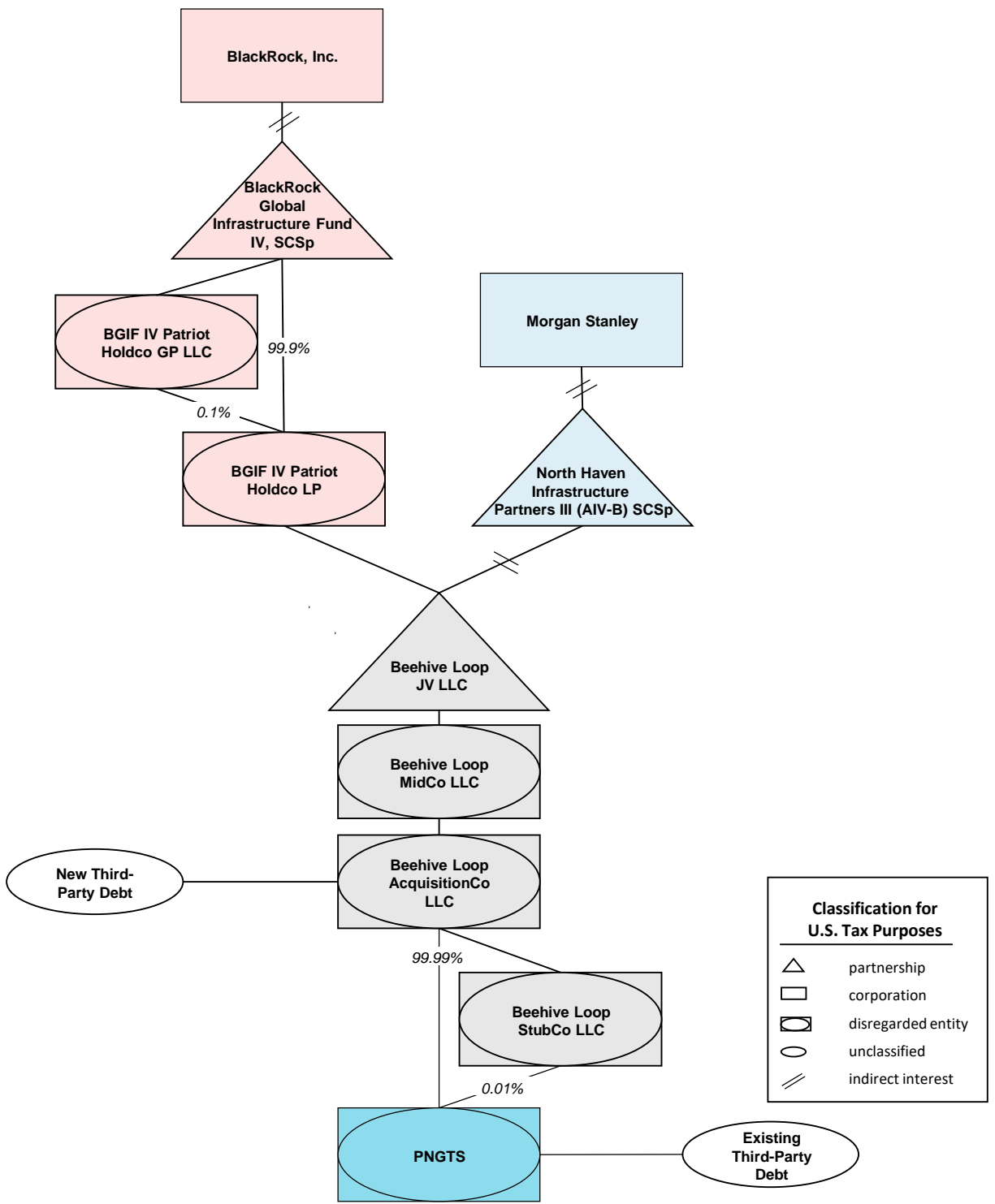
Notes: This organizational chart was prepared on information provided by the Company. We have not confirmed or verified the legal status of the entities shown.

Classification for U.S. Tax Purposes	
△	partnership
□	corporation
▭	disregarded entity
○	unclassified
∕	indirect interest

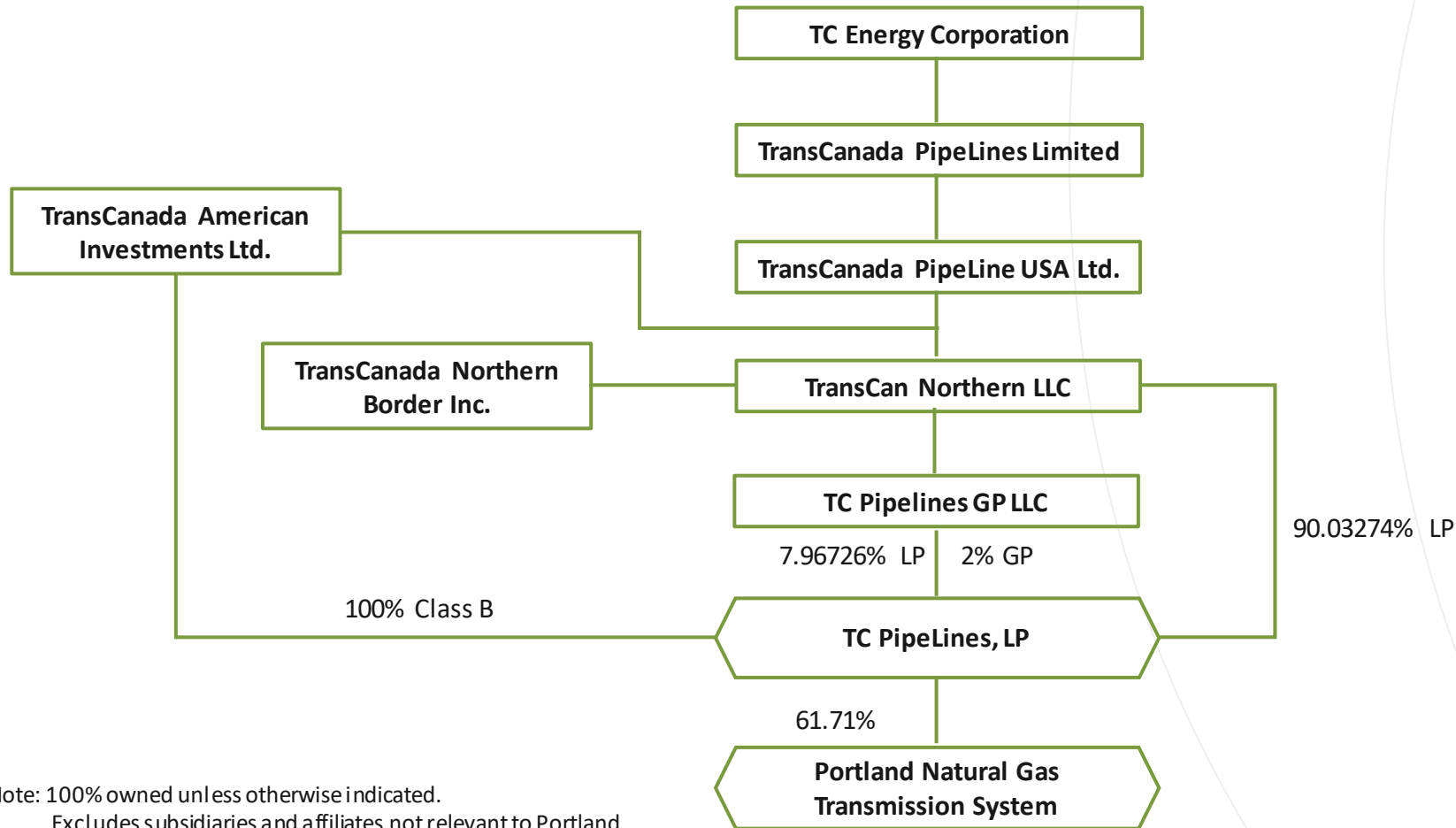
Pre-Closing Structure: Acquisition Structure



Resulting Structure



Organizational Chart of TC Energy Corporation and Portland Natural Gas Transmission System



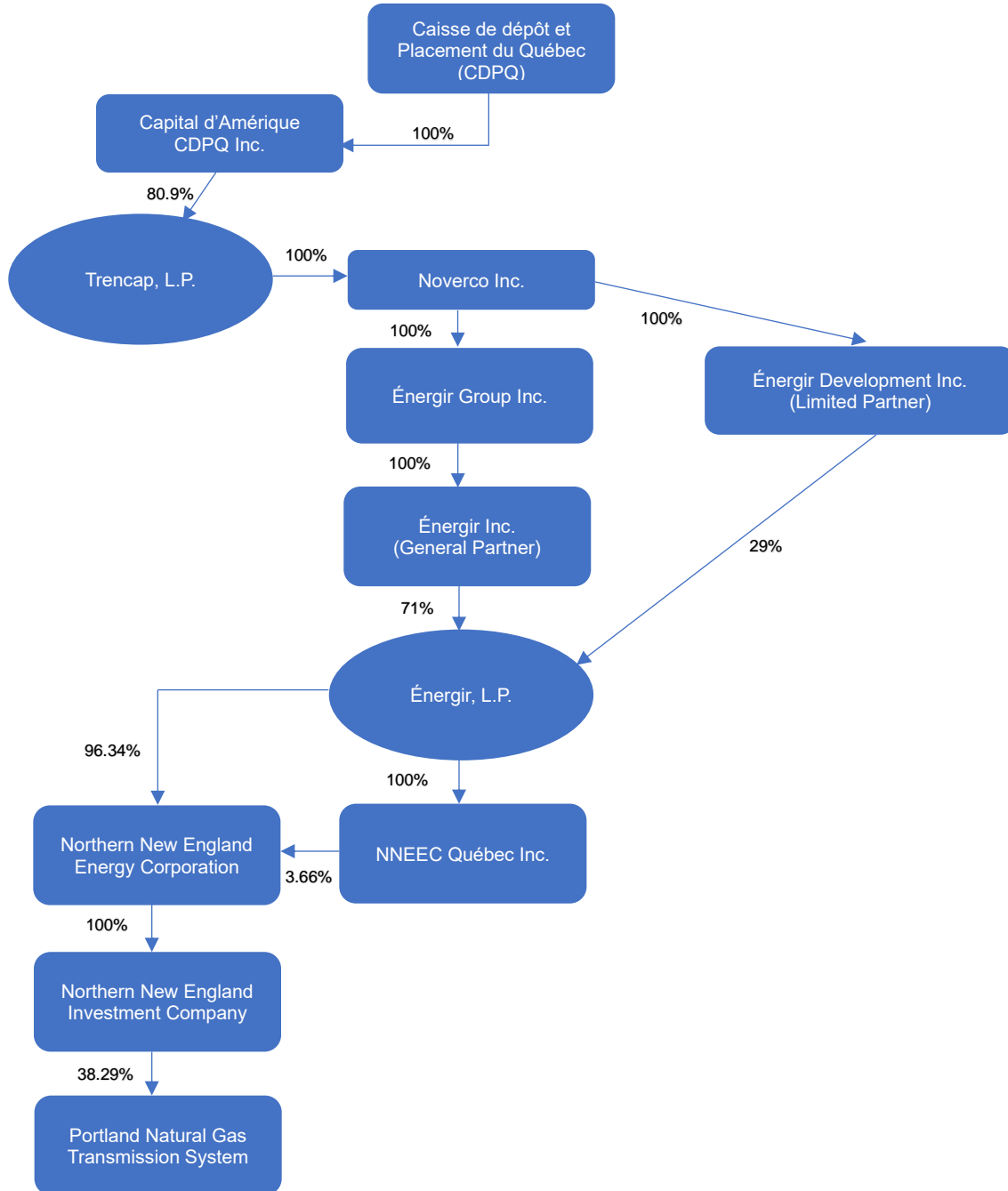
Note: 100% owned unless otherwise indicated.
 Excludes subsidiaries and affiliates not relevant to Portland Natural Gas Transmission System.



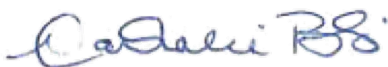
**ÉNERGIR INC.
and
ÉNERGIR, L.P.**

OFFICER'S CERTIFICATE

I, the undersigned, Nathalie Blais, Assistant Corporate Secretary of Énergir Inc., acting in its capacity as General Partner of Énergir, L.P, hereby certify that the following diagram indicates the accurate shareholdings of the Corporation as of the date hereof:



DATED this 29th day of February 2024.



NATHALIE BLAIS
Assistant Corporate Secretary