

10/17/2018 11:41 AM - sulligx - C:\Users\sulligx\appdata\local\temp\AcPublish_18528\H14143307.dwg - LOCATION MAP 267-268 ES VER: 12/2016

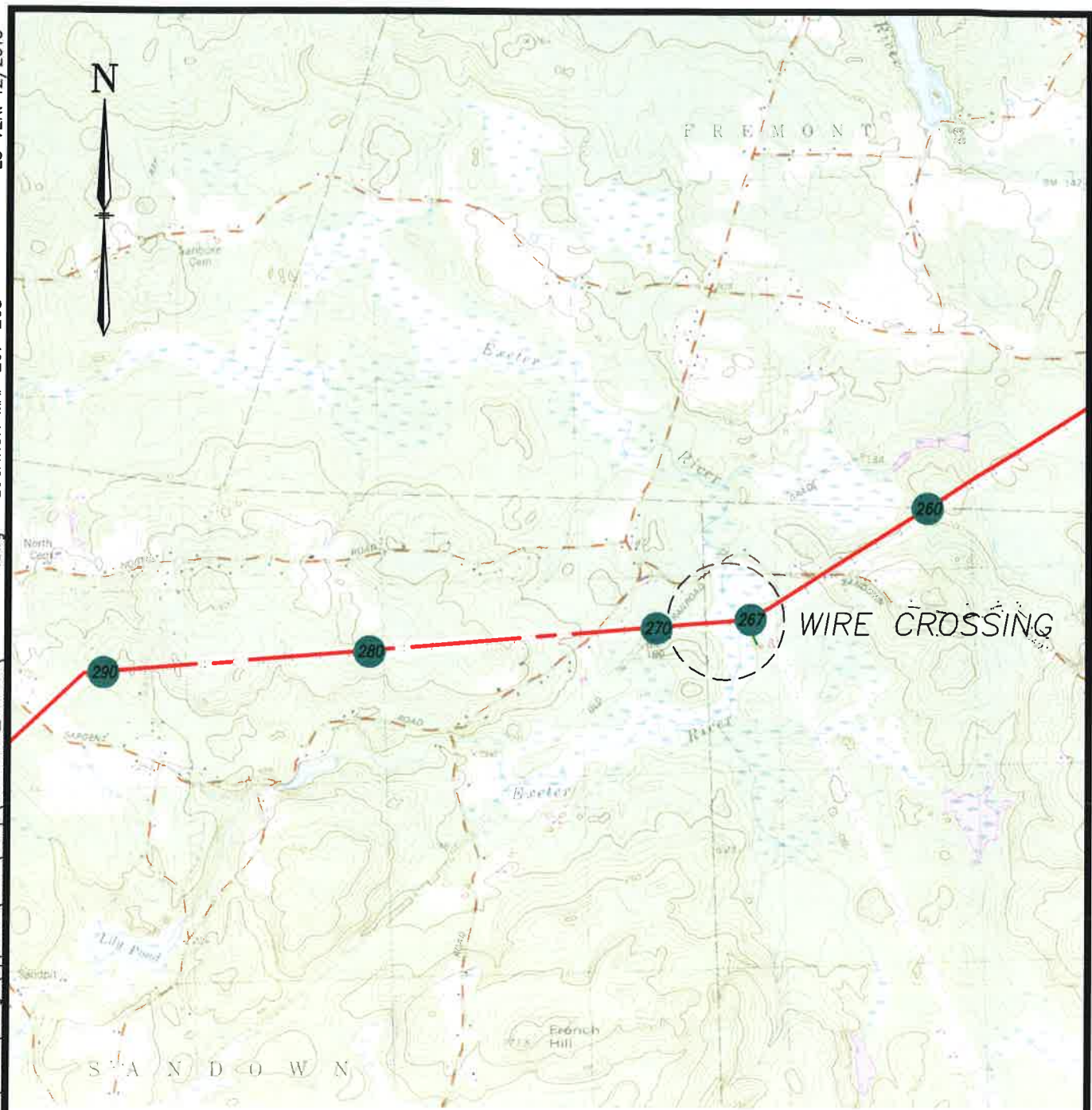


EXHIBIT 1

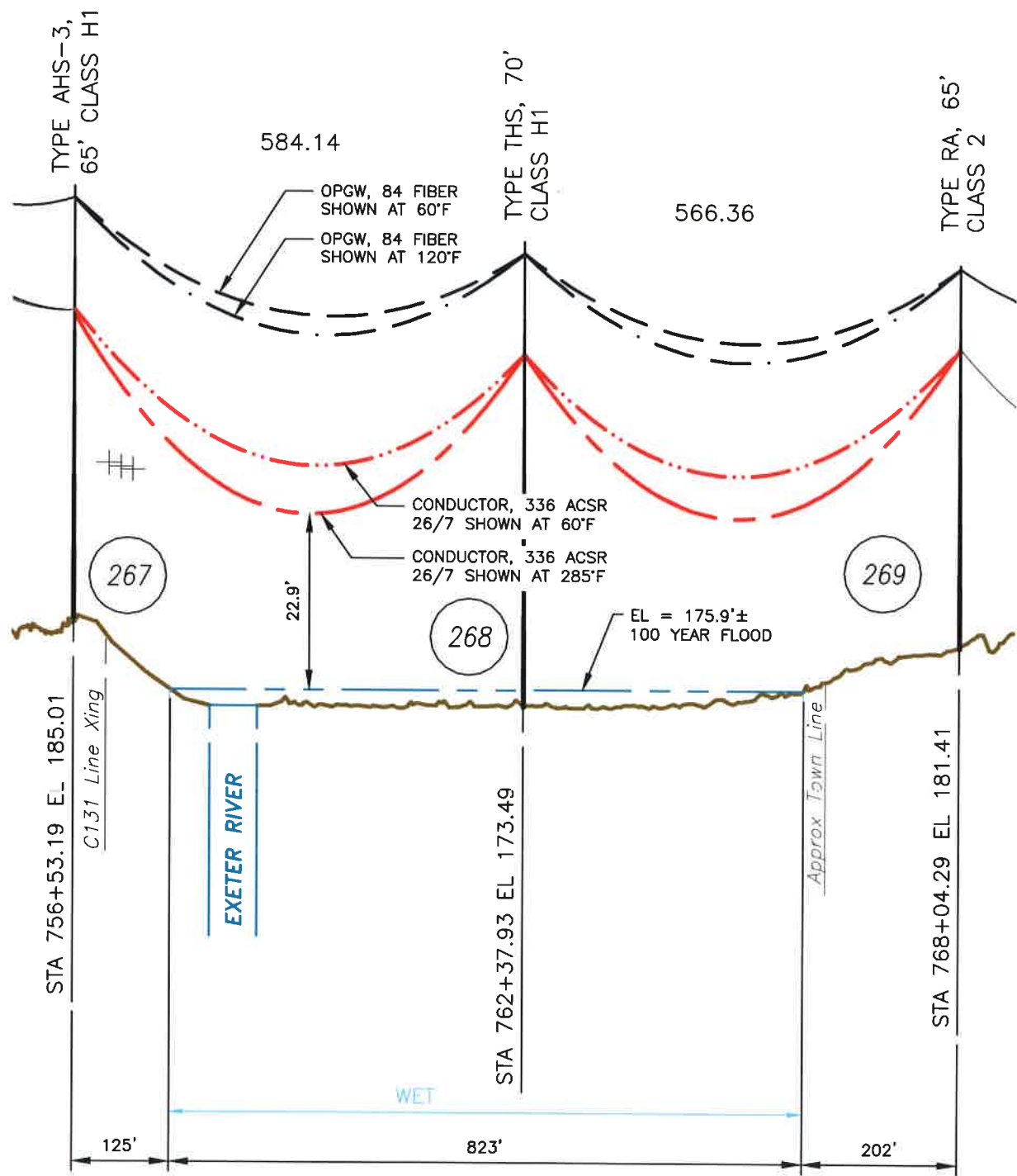
LEGEND:

- H141 LINE — — — — —
- EXISTING H141 STR ●

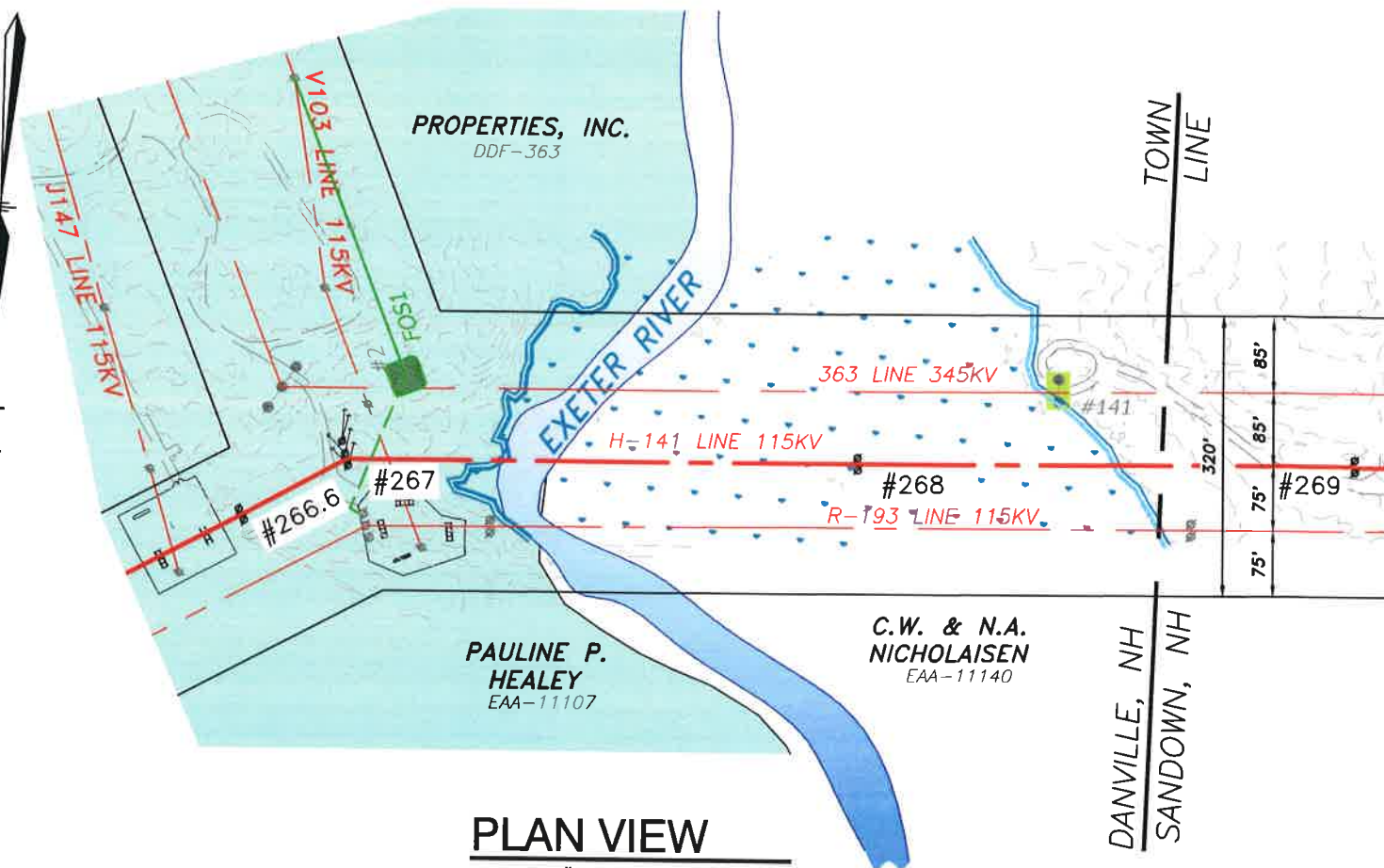
<h1 style="margin: 0;">EVERSOURCE</h1> <h2 style="margin: 0;">ENERGY</h2>		T	1
		DRAWN	GBS
<p>LOCATION PLAN H141 115 kV LINE, STR 267 TO 268 EXETER RIVER DANVILLE, NEW HAMPSHIRE</p>		ENGINEER	KLM
		CHECKED	KLM
		APPROVED	DSD
		DATE	10/12/18

DWG REV	EPM/DESCRIPTION	CONT/PEP	DATE	DRN	CHKD	APPR
1	SUPERSEDES DRAWING H14143305		10/18	GBS	JRS	DSD

SCALE: 1" = 2500' FILE: H14143307.DWG DRAWING NO. H14143307



PROFILE VIEW
 SCALE: HORZ 1" = 200'
 VERT 1" = 20'



PLAN VIEW
 SCALE: 1" = 200'

LEGEND:

- STATIC, OPGW, 84 FIBER
- — — — — SHOWN AT 60°F
- - - - - SHOWN AT 120°F
- 336 ACSR 26/7
- · - · - · SHOWN AT 60°F
- - - - - SHOWN AT 285°F
- EVERSOURCE FEE PROPERTY

NOTES:

1. ONLY LOWEST CONDUCTOR PHASE SHOWN FOR CLARITY.
2. ELEVATIONS REFERENCED TO THE NORTH AMERICAN VERTICAL DATUM OF 1988.

EXHIBIT 2

1	SUPERSEDES DRAWING H14143306	10/18	GBS	JRS	DSD	
DWG REV	EPN/DESCRIPTION	CONT/PE#	DATE	DRN	CHKD	APPR

EVERSOURCE ENERGY		T	1
		DRAWN	GBS
H141 115 kV TRANSMISSION LINE BETWEEN STR 267 AND 268 EXETER RIVER DANVILLE, NEW HAMPSHIRE		ENGINEER	KLM
		CHECKED	KLM
SCALE: 1" = 200' FILE: H14143307.DWG IMAGE:		APPROVED	DSD
		DATE	10/12/18
DRAWING NO. H14143307			