

LOCATION PLAN

EXHIBIT 1

LEGEND:

328 LINE —————
 PROPOSED 328 STR ●

EVERSOURCE ENERGY

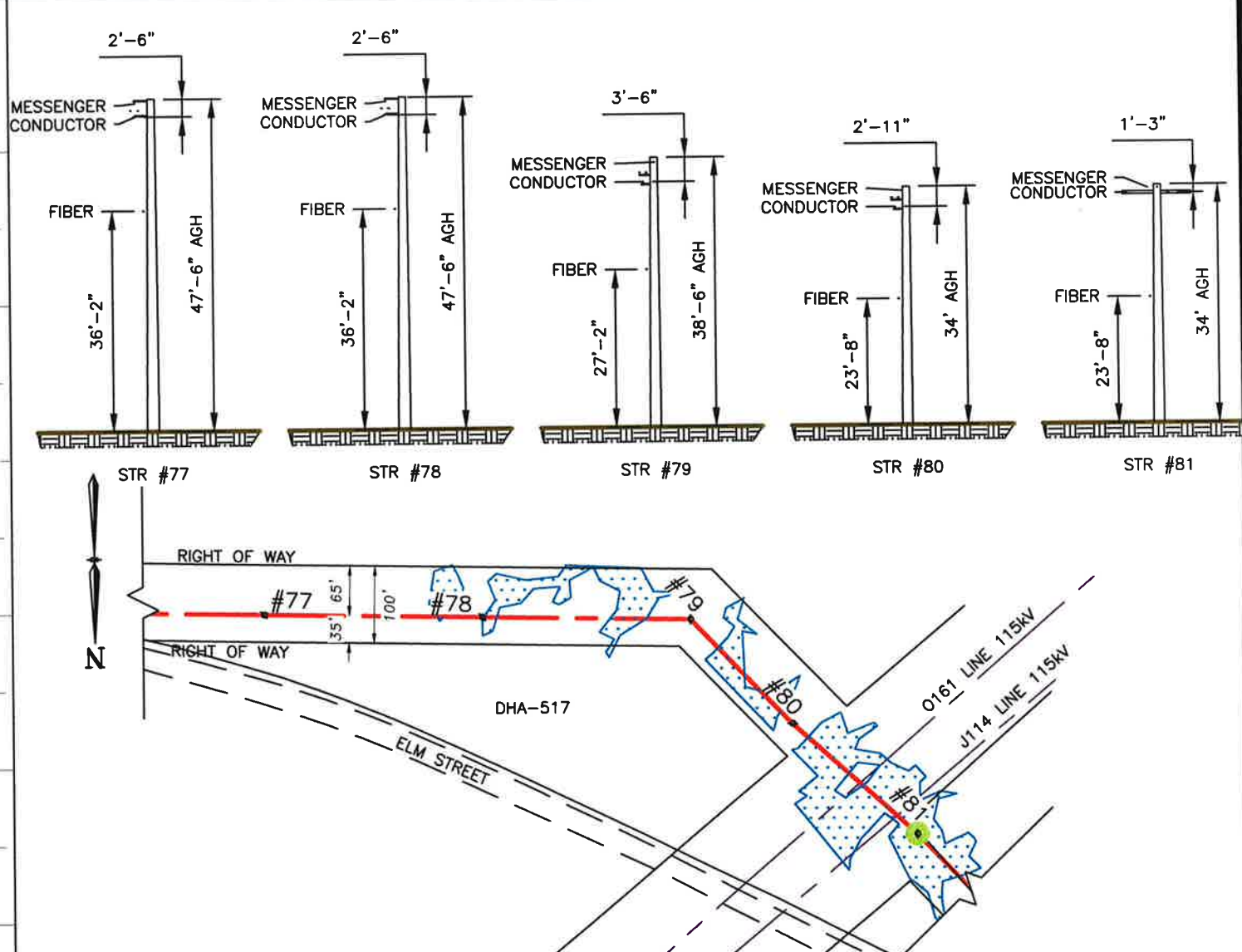
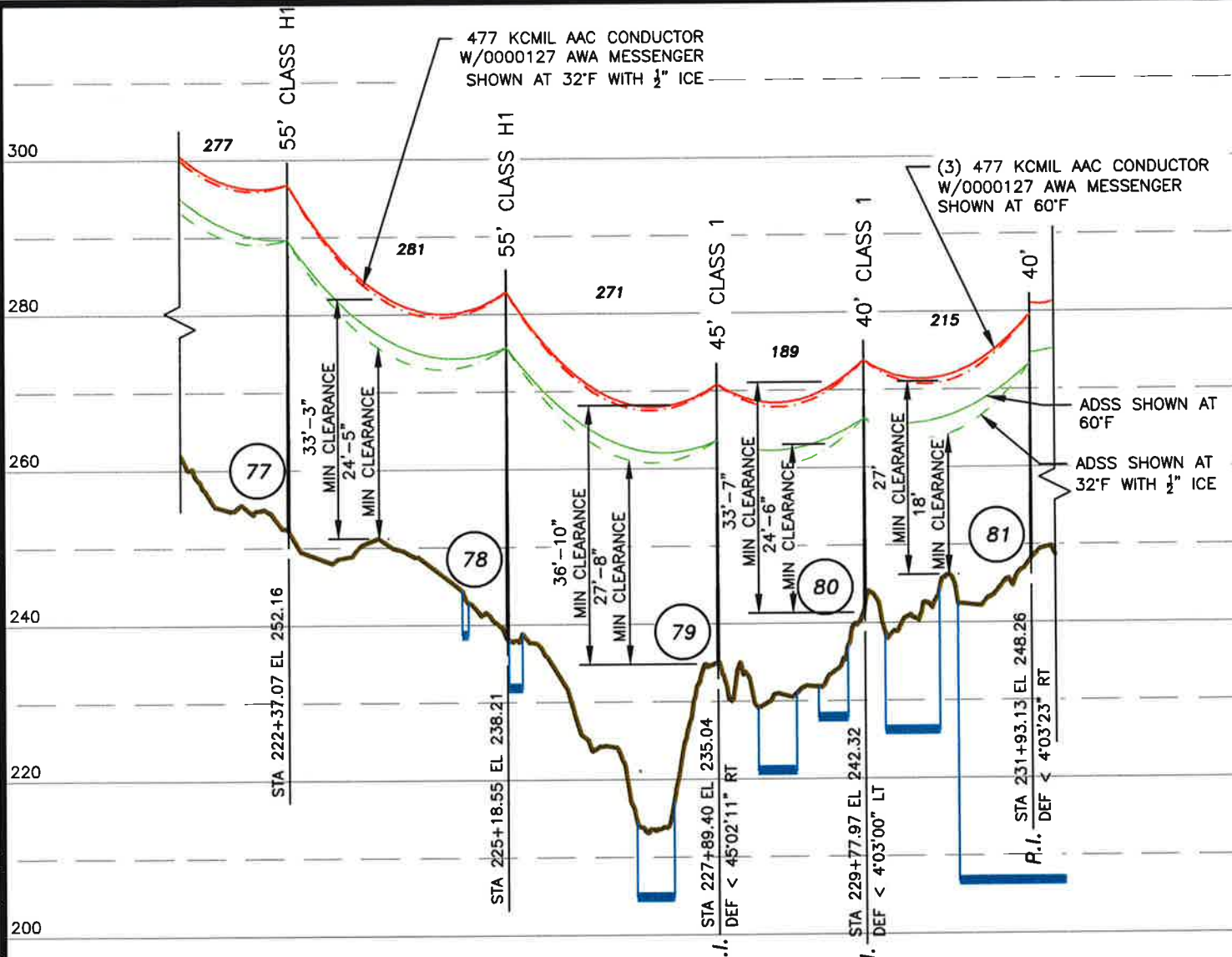
328 34.5 kV LINE
 STATE OF NEW HAMPSHIRE
 NH PUC STATE LAND CROSSING
 BETWEEN STR 74 AND 81
 1 OF 3

T	0
DRAWN DGM	
ENGINEER PHB	
CHECKED PHB	
APPROVED	
DATE 7/26/18	

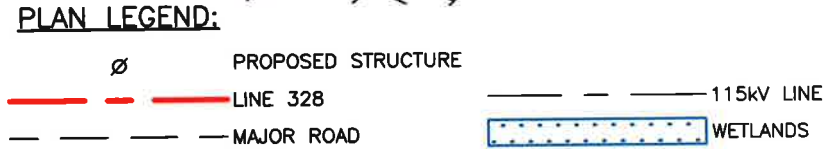
DWG REV	EPN/DESCRIPTION	CONT/PE#	DATE	DRN	CHKD	APPR
0	SUBMITTED FOR REVIEW		7/26/18	DGM	PHB	

SCALE: 1" = 1000'
 FILE: 032844500.DWG
 IMAGE:

DRAWING NO. 032844500



- NOTES**
1. VERTICAL DATUM IS NAVD88 IN FEET.
 2. COORDINATE SYSTEM IS NEW HAMPSHIRE STATE PLANE NAD83 IN US SURVEY FEET.
 3. ONLY LOWEST CONDUCTOR SHOWN FOR CLARITY.
 4. ELEVATIONS AND SPAN LENGTHS SHOWN ARE IN FEET.

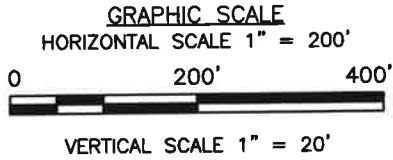
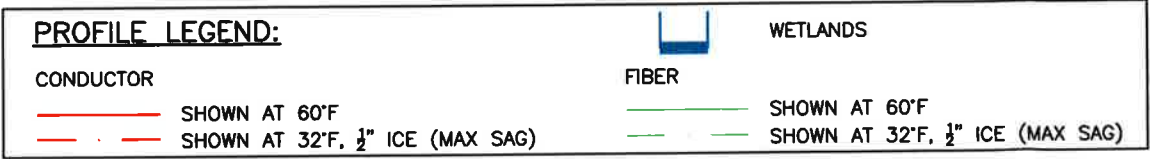


STRUCTURE LOCATION:

STR. #77	- LAT. = 43° 1'1.88"N LONG. = 71°33'44.76"W
STR. #78	- LAT. = 43° 1'1.94"N LONG. = 71°33'48.55"W
STR. #79	- LAT. = 43° 1'2.00"N LONG. = 71°33'52.20"W
STR. #80	- LAT. = 43° 1'3.35"N LONG. = 71°33'53.95"W
STR. #81	- LAT. = 43° 1'4.77"N LONG. = 71°33'56.10"W

CABLE SCHEDULE:

WIRE	# OF CABLES	TYPE	DIA. (IN.)	WEIGHT/1000 FT	CABLE STRENGTH (LBS.)
TRANSMISSION COND.	3	477 KCMIL AAC 19 STRAND	0.7220	903	8,360
FIBER	1	ADSS - 24 FIBER OFS TYPE AT-QB727D6-024-TNGE-18-6-62 INSTALLED @ 1,400 LBS. NESC HEAVY INITIAL	0.6430	153	9,948
MESSENGER	1	0000127 AWA MESSENGER INSTALLED @ 10,980 LBS. NESC HEAVY INITIAL	0.7220	699	32,670



0	SUBMITTED FOR REVIEW	7/26/18	DGM	PHB
DWG REV	EPH/DESCRIPTION	CONT/PE#	DATE	DRM

EVERSOURCE ENERGY

328 34.5 kV LINE
STATE OF NEW HAMPSHIRE
NH PUC STATE LAND CROSSING
BETWEEN STR 74 AND 81
3 OF 3

SCALE AS SHOWN

FILE: 032844500.DWG

DRAWING NO. 032844500

DATE 7/26/18

T 0

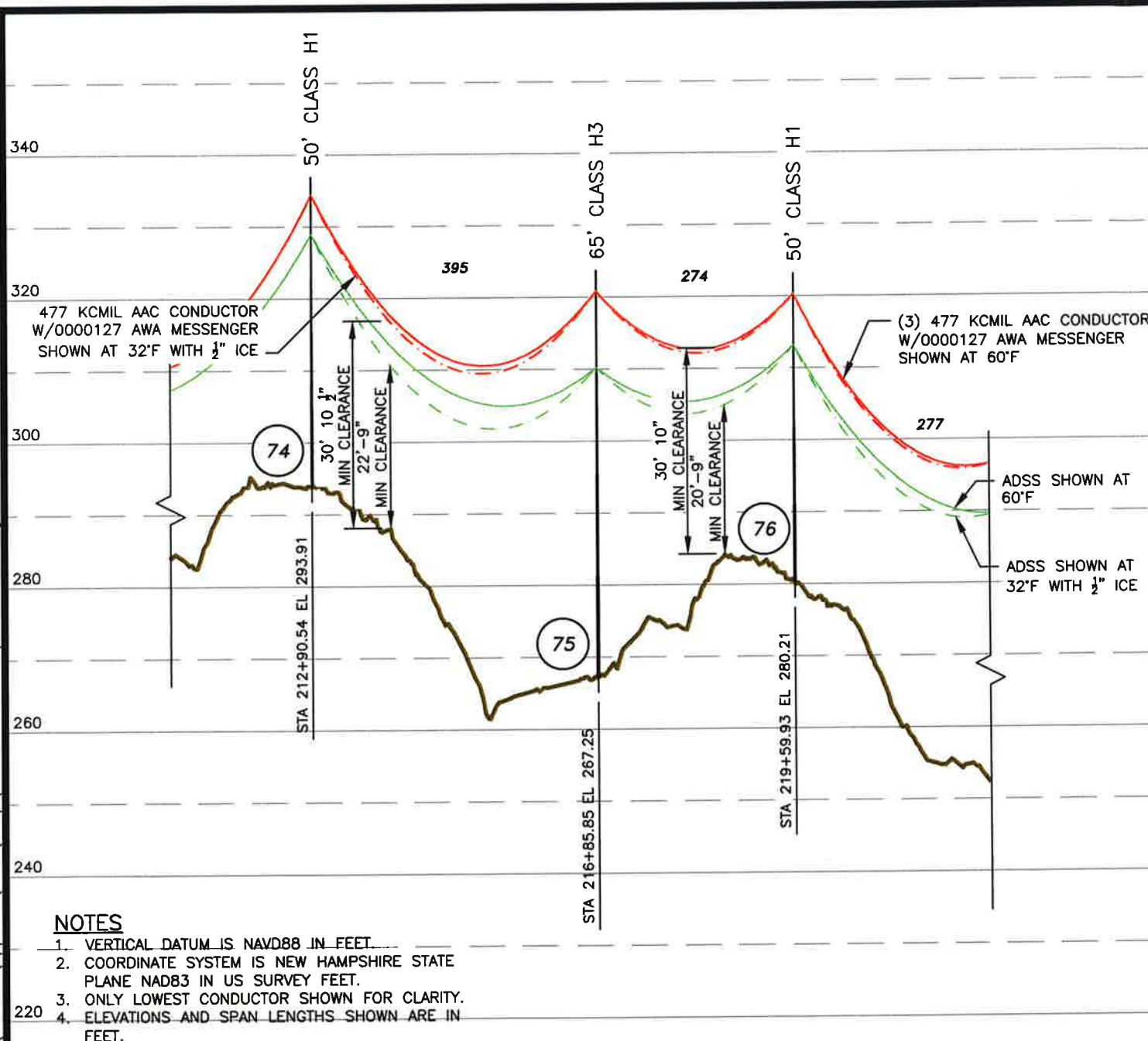
DRAWN DGM

ENGINEER PHB

CHECKED PHB

APPROVED

EXHIBIT 2



- NOTES**
1. VERTICAL DATUM IS NAVD88 IN FEET.
 2. COORDINATE SYSTEM IS NEW HAMPSHIRE STATE PLANE NAD83 IN US SURVEY FEET.
 3. ONLY LOWEST CONDUCTOR SHOWN FOR CLARITY.
 4. ELEVATIONS AND SPAN LENGTHS SHOWN ARE IN FEET.

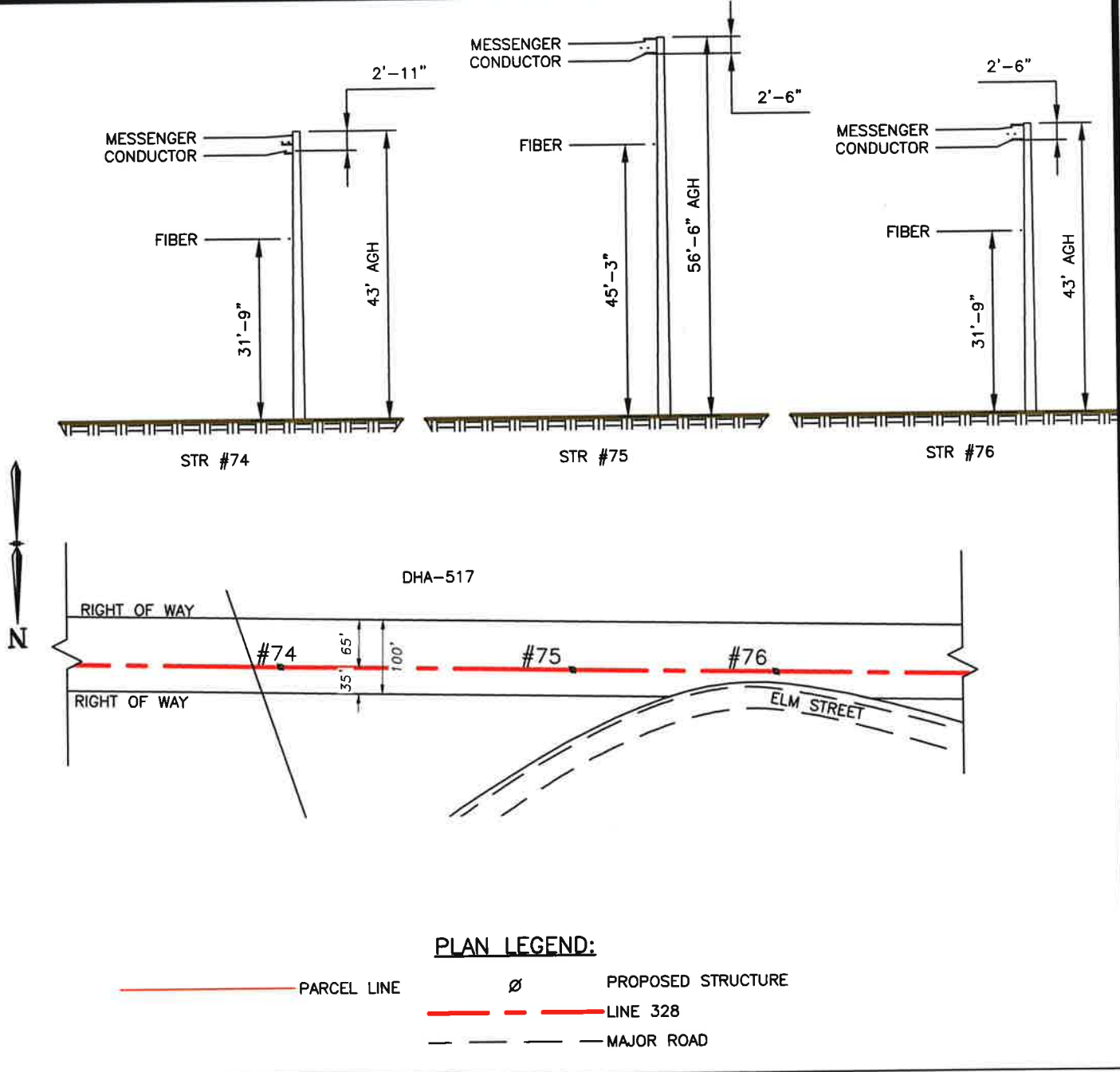
STRUCTURE LOCATION:
 STR. #74 - LAT. = 43° 1'1.68"N
 LONG. = 71°33'32.03"W
 STR. #75 - LAT. = 43° 1'1.77"N
 LONG. = 71°33'37.35"W
 STR. #76 - LAT. = 43° 1'1.83"N
 LONG. = 71°33'41.03"W

CABLE SCHEDULE:

WIRE	# OF CABLES	TYPE	DIA. (IN.)	WEIGHT/1000 FT	CABLE STRENGTH (LBS.)
TRANSMISSION COND.	3	477 KCMIL AAC 19 STRAND	0.7220	903	8,360
FIBER	1	ADSS - 24 FIBER DFS TYPE AT-QB727D6-024-TNGE-18-6-62 INSTALLED @ 1,400 LBS. NESC HEAVY INITIAL	0.6430	153	9,948
MESSENGER	1	0000127 AWA MESSENGER INSTALLED @ 10,980 LBS. NESC HEAVY INITIAL	0.7220	699	32,670

PROFILE LEGEND:

CONDUCTOR	FIBER
— SHOWN AT 60°F	— SHOWN AT 60°F
— SHOWN AT 32°F, 1/2" ICE (MAX SAG)	— SHOWN AT 32°F, 1/2" ICE (MAX SAG)



GRAPHIC SCALE
 HORIZONTAL SCALE 1" = 200'
 0 200' 400'
 VERTICAL SCALE 1" = 20'

PLAN LEGEND:

- PARCEL LINE
- ∅ PROPOSED STRUCTURE
- LINE 328
- MAJOR ROAD

EXHIBIT 2

EVERSOURCE ENERGY

328 34.5 kV LINE
 STATE OF NEW HAMPSHIRE
 NH PUC STATE LAND CROSSING
 BETWEEN STR 74 AND 81
 2 OF 3

DATE	7/26/18
SCALE	AS SHOWN
FILE	032844500.DWG
DRAWING NO.	032844500