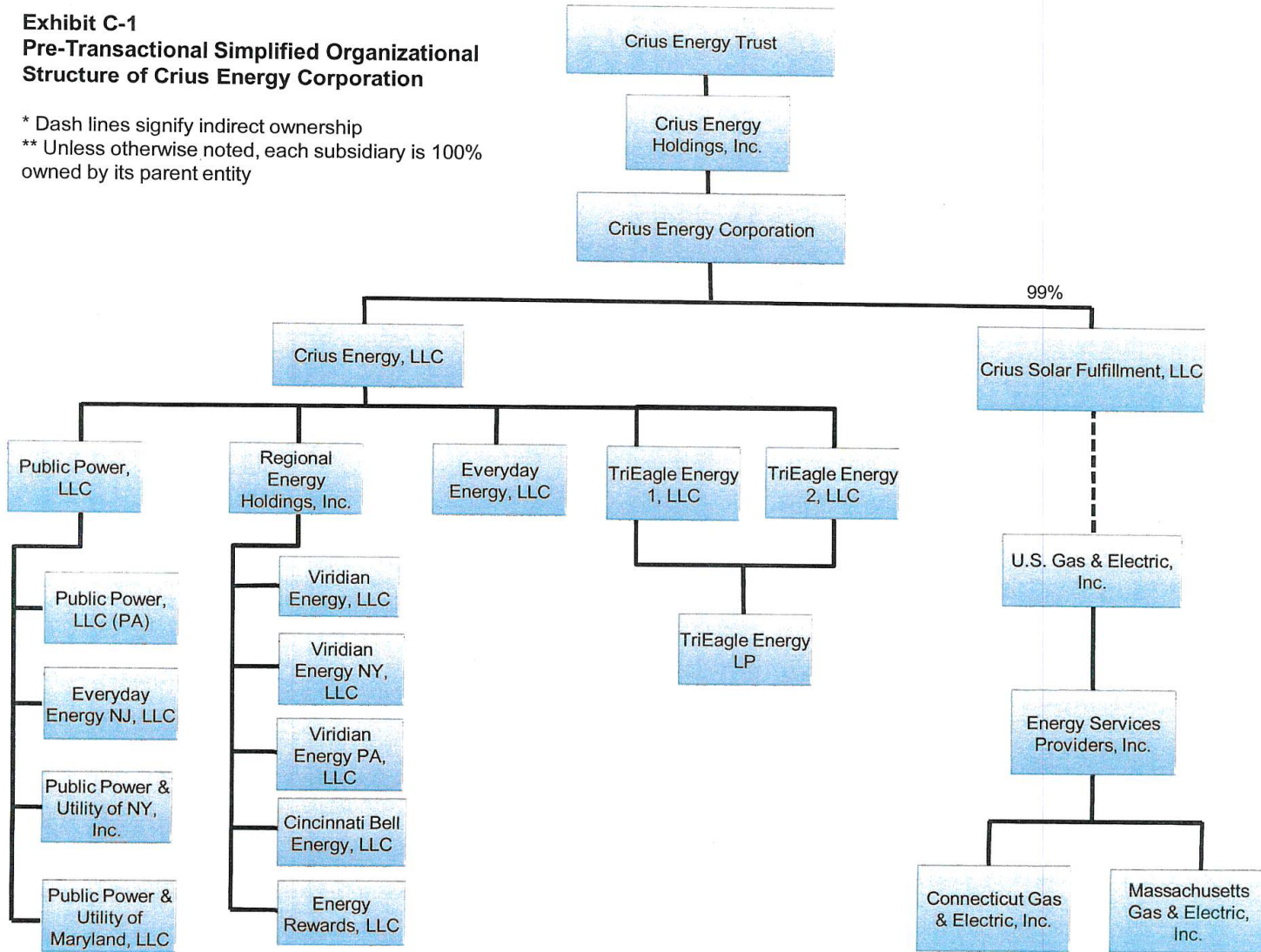

APPENDIX I

ORGANIZATIONAL CHARTS

FROM FERC FILING DOCKET NO. EC19-59-000

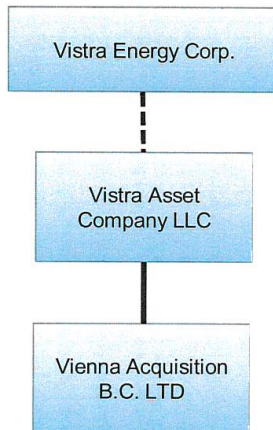
**Exhibit C-1
Pre-Transactional Simplified Organizational
Structure of Crius Energy Corporation**

* Dash lines signify indirect ownership
** Unless otherwise noted, each subsidiary is 100% owned by its parent entity



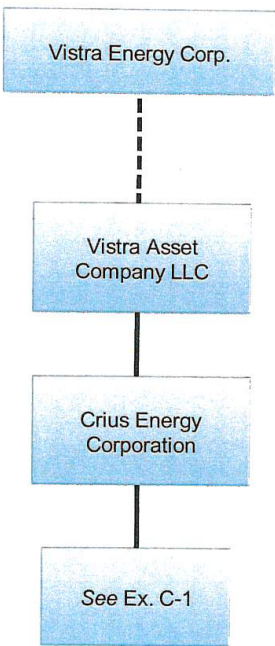
**Exhibit C-2
Pre-Transactional Simplified Organizational
Structure of Vistra Energy Corp.**

* Dash lines signify indirect ownership
** Unless otherwise noted, each subsidiary is 100%
owned by its parent entity



**Exhibit C-3
Post-Transactional Simplified Organizational
Structure**

* Dash lines signify indirect ownership
** Unless otherwise noted, each subsidiary is 100%
owned by its parent entity





Vistra Energy (“Vistra”) is a premier, integrated power company based in Irving, Texas, combining an innovative, compliant, and customer-centric approach to retail with a focus on safe, reliable, and efficient power generation. Through its retail and generation businesses which include TXU Energy, Homefield Energy, Dynegy, 4Change Energy, Express Energy and Luminant, Vistra currently operates in 12 states with about 5,400 employees. With a commitment to compliance, Vistra’s current retail brands serve approximately 2.9 million residential, commercial, and industrial customers across five states, and its generation fleet totals approximately 41,000 megawatts of highly efficient generation capacity, with a diverse portfolio of natural gas, nuclear, coal, solar, and battery storage facilities.