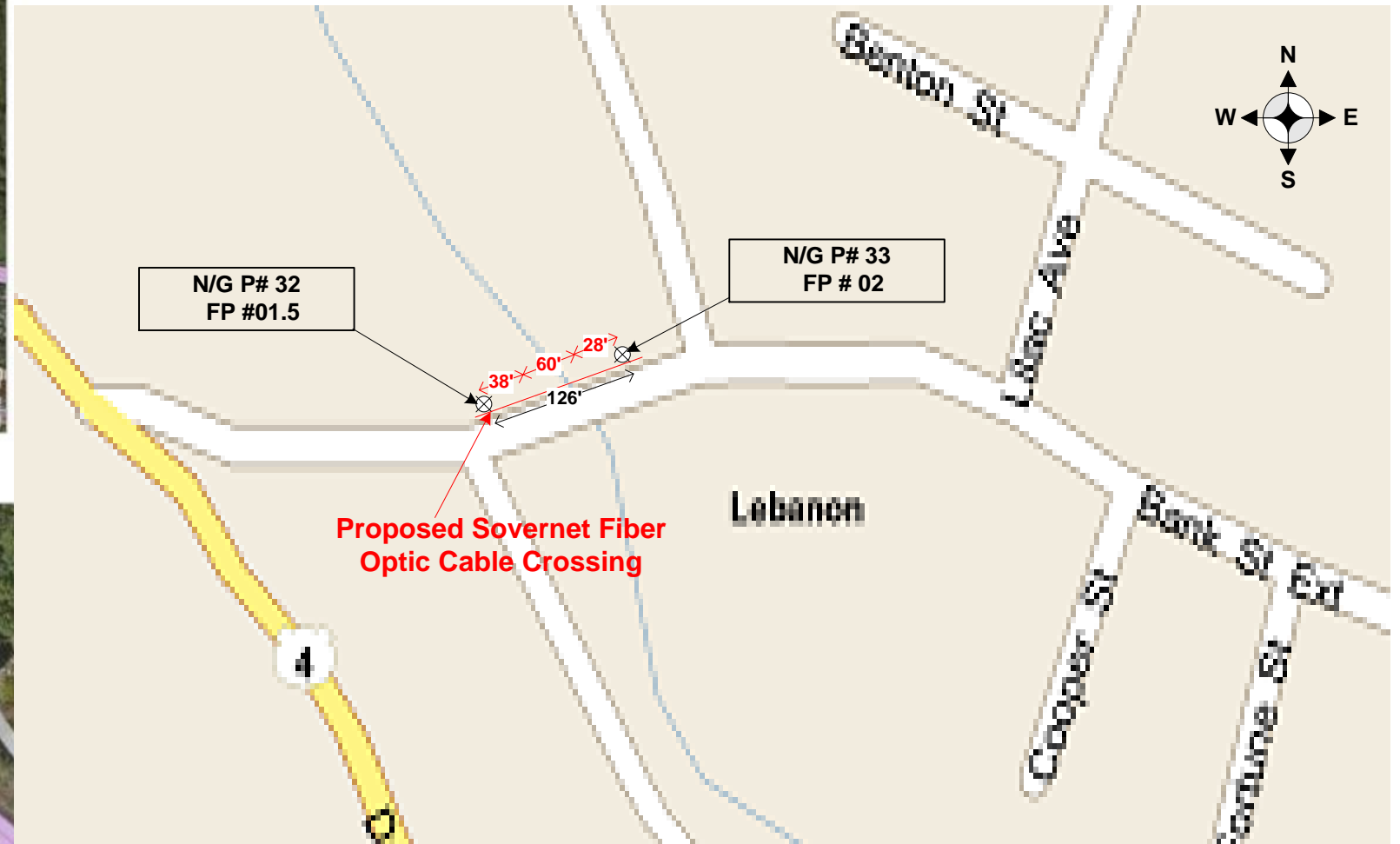
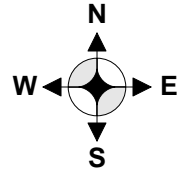
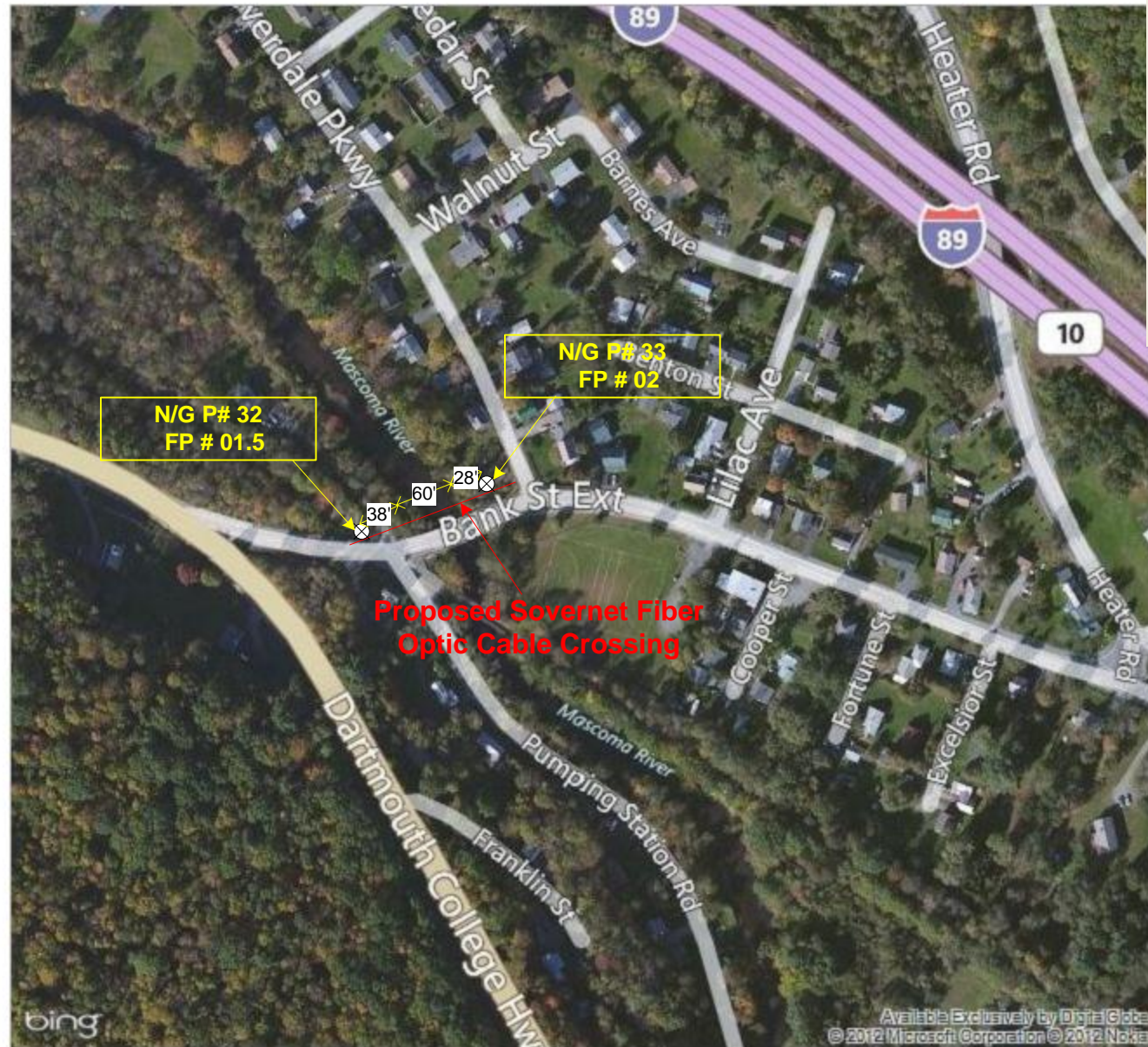


Mascoma River Crossing # 5 Bank St. Ext. Zone 12

On the go? Use m.bing.com to find maps, directions, businesses, and more



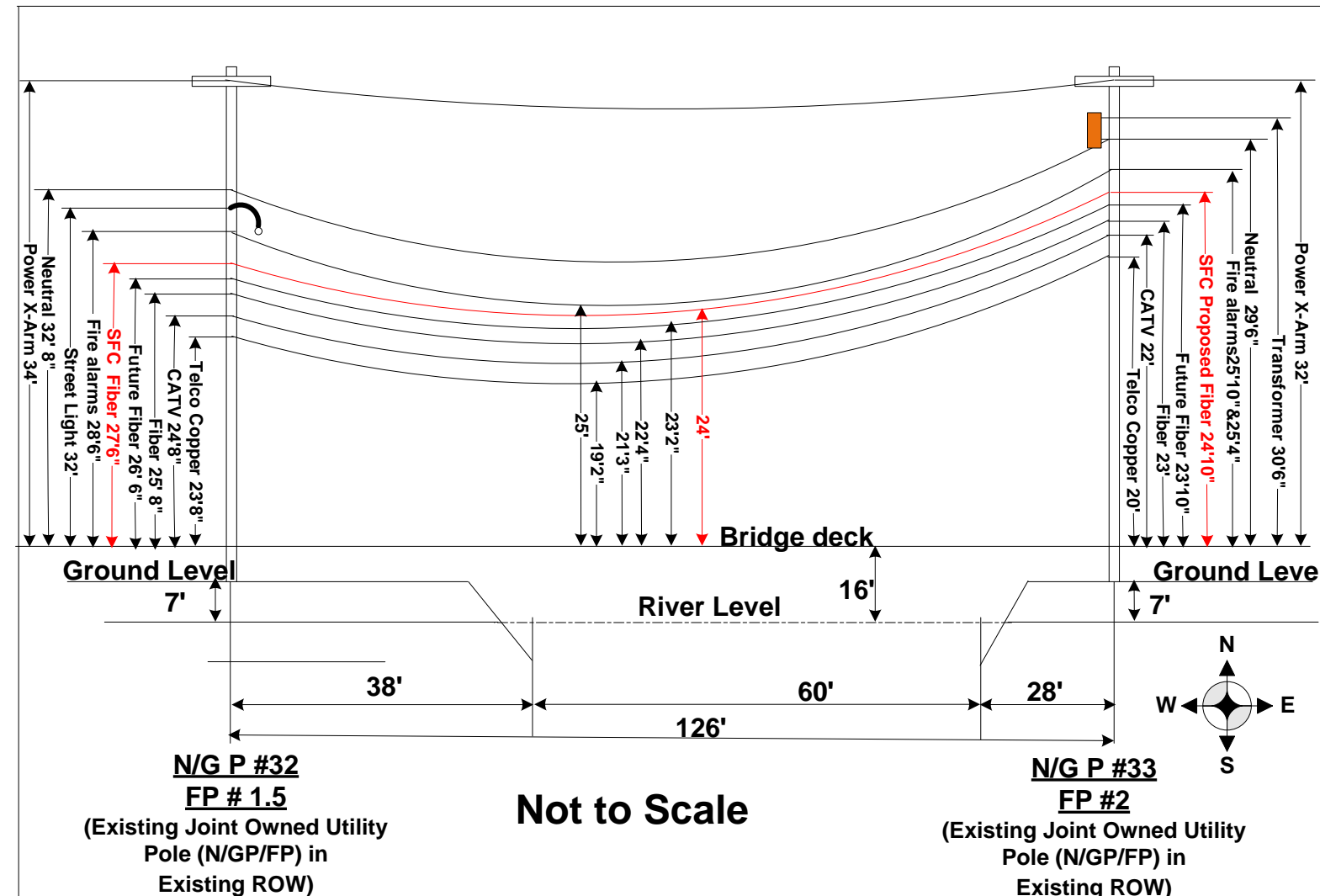
Mascoma River Crossing Bank St. Ext.



5 Canal Street
Bellow Falls, VT 05101
802-460-9100

WO:	SOVERNET COMMUNICATIONS		
ROUTE:	Zone 12		
ROW:	Public	DATE	
STAKED BY:	DLY	DATE	3-28-13
REV BY:		DATE	
PROJECT:	Cell Tower on Tower Rd.		
ROUTE:	Mascoma River crossing Bank St. Ext		
SHEET:	1	OF	2

Mascoma River Crossing at Bank St. Ext.



Mascoma River Crossing at Bank St. Ext.



Spanmaster® Release 3.1 Sag / Tension Computations

Sovernet Fiber Corporation 11/01/12 Mascoma River at Bank St. Ext. Mascoma River Crossing North side of Bank St. at Pumping Station St.

Selected Cables	X-SECT AREA (sq.in)	EFF MODULUS (psi)	NOMINAL DIAM (in)	EFF. EXP. COEFF. (1/F)	CABLE WEIGHT (lb/ft)	E*A LOAD BEARING CAPACITY (lbs)	MAX. RATED LOAD (lbs)
5/16*11.2mEHS	0.0595	2.60E+07	0.313	5.60E-06	0.2050	1545960	11200
ORF-2"D-072-LN Bundle	4.4300	1.20E+05	2.688	6.70E-06	1.0300	531600	2580

NESC RESULTS

Loading Condition	Temp. (F)	Ice Load (lb/ft)	Ice Thick. (in)	Wind Constant (ft/s)	Horiz. Wind Load (lb/ft)	Result. Load + Const. (lb/ft)	Sag (ft)	Tension (lb)	% Len. Chg. From Input Conditions	Sag @ 50.00 ft	Horiz. Sag Comp. (ft)	Vert. Sag Comp. (ft)	Vector Angle Deg.
Rule 251 - Medium	5.0	0.913	.25	.2	4.0	2.597	2.21	2327	0.04	1.40	0.98	1.98	26.3
232A1	120.0	0.000	.00	.0	0.0	1.235	2.02	1212	0.03	1.27	0.00	2.02	0.0

Span Length = 126.00 ft
 Span Sag = 1.58 ft (18.9 in)
 Span Tension = 1,558 lb
 Max Load = 11,200 lb
 Usable load (60%) = 6,720 lb
 Catenary Length = 126.052 ft
 Stress Free Length @ Installed Temperature = 125.926 ft

Unloaded Strand
 Sag = .42 ft (5.1 in) 0.34 %
 Tension = 958 lb

Temp (F)	Midspan Sag (ft)	Tension (lb)	% Length Change	Clearance
-40.0	1.28	1,943	-0.32	N/A
-30.0	1.30	1,884	-0.31	N/A
-20.0	1.34	1,826	-0.31	N/A
-10.0	1.38	1,770	-0.31	N/A
.0	1.43	1,715	-0.31	N/A
10.0	1.47	1,663	-0.31	N/A
20.0	1.52	1,612	0.00	N/A
30.0	1.57	1,564	0.00	N/A
40.0	1.61	1,517	0.00	N/A
50.0	1.66	1,473	0.00	N/A
60.0	1.71	1,430	0.01	N/A
70.0	1.76	1,389	0.01	N/A
80.0	1.81	1,350	0.01	N/A
90.0	1.87	1,313	0.02	N/A
100.0	1.92	1,277	0.02	N/A
110.0	1.97	1,244	0.02	N/A
120.0	2.02	1,212	0.03	N/A
130.0	2.07	1,181	0.03	N/A
140.0	2.13	1,152	0.03	N/A

Construction Notes:

Sovernet Fiber Co proposes to install a 10 M Steel Stranded Cable between the existing poles shown above that will traverse the River. The new strand will be installed at the height shown. There will be a 2" duct Double lashed to the strand in which the fiber will be placed. The supporting Strand will be dead-ended on each Pole so that SFC's cable sag matches the adjacent cables. There will be an Information tag installed at each Pole on the fiber at the time the fiber is installed. The cable will be Placed using the correct safety Personnel when installing the Fiber. The proposed fiber will Be installed with proper Clearance to the other cables Already in place. (See info Above).



**N/G P #32
FP # 1.5**
(Existing Joint Owned Utility Pole (N/GP/FP) in Existing ROW)



**N/G P #33
FP #2**
(Existing Joint Owned Utility Pole (N/GP/FP) in Existing ROW)



SOVERNET COMMUNICATIONS
 5 Canal Street
 Bellow Falls, VT 05101
 802-460-9100

WO:	SOVERNET COMMUNICATIONS		
ROUTE:	Zone 12		
ROW:	Public	DATE	
STAKED BY:	DLY	DATE	3-28-13
REV BY:		DATE	
PROJECT:	Cell Tower on Tower Rd.		
ROUTE:	Mascoma River crossing Bank St. Ext		
SHEET:	2	OF	2