

2014 Quarterly Report  
As of March 31, 2014  
**CORE NH Program Highlights**

NH CORE ENERGY EFFICIENCY PROGRAMS	EXPENSES (\$)		SAVINGS (Lifetime kWh)		SAVINGS (Lifetime Gas Pgm MMBTU)		NUMBER OF CUSTOMERS	
	Actual + In Process + Prospective	Percent of Budget	Actual + In Process + Prospective	Percent of Budget	Actual + In Process + Prospective	Percent of Budget	Actual + In Process + Prospective	Percent of Budget
	<b>RESIDENTIAL (nhsaves@home)</b>							
ENERGY STAR Homes	\$961,753	61%	10,840,152	69%	7,705	18%	392	80%
NH Home Performance w/Energy Star	\$2,561,300	70%	20,372,793	484%	45,223	13%	1,010	51%
Home Energy Assistance	\$1,748,905	34%	5,145,351	72%	92,951	61%	535	73%
ENERGY STAR Lighting	\$1,140,899	83%	36,900,255	100%			189,157	58%
ENERGY STAR Appliances	\$1,096,947	28%	12,569,630	29%	97,060	39%	7,637	30%
<b>TOTAL RESIDENTIAL</b>	<b>\$7,509,802</b>	<b>48%</b>	<b>85,828,182</b>	<b>81%</b>	<b>242,940</b>	<b>30%</b>	<b>198,731</b>	<b>56%</b>
<b>COMMERCIAL &amp; INDUSTRIAL (nhsaves@work)</b>								
Small Business Energy Solutions	\$2,672,609	55%	83,399,828	72%	253,555	52%	771	37%
Large Business Energy Solutions	\$5,842,347	71%	257,107,248	85%	468,245	47%	326	47%
Municipal Program	\$1,047,777	52%	42,249,518	71%			79	17%
<b>TOTAL COMMERCIAL &amp; INDUSTRIAL</b>	<b>\$9,562,734</b>	<b>62%</b>	<b>382,756,594</b>	<b>80%</b>	<b>721,800</b>	<b>49%</b>	<b>1,176</b>	<b>36%</b>
<b>TOTAL</b>	<b>\$17,072,536</b>	<b>55%</b>	<b>468,584,776</b>	<b>80%</b>	<b>964,739</b>	<b>42%</b>	<b>199,907</b>	<b>56%</b>

nhsaves@home Energy Star Homes	Budget Goal (2014)	Thru 3/31/2014				Percent of Budget/Goal
		Actual	In Process	Prospective	Total	
<b>Program Expenses (\$)</b>						
LU	\$96,320	\$1,397	\$0	\$0	\$1,397	1.5%
NHEC	\$157,488	\$16,739	\$23,590	\$5,898	\$46,227	29.4%
PSNH	\$962,928	\$109,506	\$43,802	\$652,692	\$806,000	83.7%
Unitil	\$195,000	\$12,378	\$14,500	\$31,900	\$58,778	30.1%
LU Gas	\$94,500	\$10,695	\$3,217	\$0	\$13,912	14.7%
Unitil Gas	<u>\$80,000</u>	<u>\$6,439</u>	<u>\$5,800</u>	<u>\$23,200</u>	<u>\$35,439</u>	<u>44.3%</u>
<b>Total</b>	<b>\$1,586,236</b>	<b>\$157,154</b>	<b>\$90,909</b>	<b>\$713,690</b>	<b>\$961,753</b>	<b>60.6%</b>
<b>Program Participation</b>						
LU	27	1	0	0	1	3.7%
NHEC	32	1	8	5	14	43.8%
PSNH	329	15	6	327	348	105.7%
Unitil	50	1	5	11	17	34.0%
LU Gas	37	1	1	0	2	5.4%
Unitil Gas	<u>13</u>	<u>0</u>	<u>2</u>	<u>8</u>	<u>10</u>	<u>76.9%</u>
<b>Total</b>	<b>488</b>	<b>19</b>	<b>22</b>	<b>351</b>	<b>392</b>	<b>80.3%</b>
<b>Annual kWh Savings</b>						
LU	48,722	23	0	0	23	0.0%
NHEC	32,022	10,604	28,579	2,381	41,564	129.8%
PSNH	515,572	18,637	7,455	406,287	432,378	83.9%
Unitil	153,488	11,986	12,666	19,000	43,652	28.4%
LU Gas	0	0	0	0	0	0.0%
Unitil Gas	<u>0</u>	<u>0</u>	<u>0</u>	<u>0</u>	<u>0</u>	<u>0.0%</u>
<b>Total</b>	<b>749,804</b>	<b>41,250</b>	<b>48,700</b>	<b>427,668</b>	<b>517,617</b>	<b>69.0%</b>
<b>Lifetime kWh Savings</b>						
LU	1,038,066	115	0	0	115	0.0%
NHEC	667,745	259,936	668,140	21,649	949,725	142.2%
PSNH	10,656,034	398,652	159,461	8,690,614	9,248,726	86.8%
Unitil	3,265,778	283,717	327,869	30,000	641,586	19.6%
LU Gas	0	0	0	0	0	0.0%
Unitil Gas	<u>0</u>	<u>0</u>	<u>0</u>	<u>0</u>	<u>0</u>	<u>0.0%</u>
<b>Total</b>	<b>15,627,623</b>	<b>942,420</b>	<b>1,155,470</b>	<b>8,742,263</b>	<b>10,840,152</b>	<b>69.4%</b>
<b>Annual MMBTU Savings</b>						
LU	854	0	0	0	0	0.0%
NHEC	601	0	39	0	40	6.6%
PSNH	8,313	700	280	15,238	16,218	195.1%
Unitil	2,023	2	108	500	610	30.2%
LU Gas	1,013	33	84	0	116	11.5%
Unitil Gas	<u>792</u>	<u>0</u>	<u>80</u>	<u>160</u>	<u>240</u>	<u>30.3%</u>
<b>Total</b>	<b>13,596</b>	<b>735</b>	<b>591</b>	<b>15,898</b>	<b>17,224</b>	<b>126.7%</b>
<b>Lifetime MMBTU Savings</b>						
LU	21,268	0	0	0	0	0.0%
NHEC	14,755	4	981	0	985	6.7%
PSNH	206,888	15,023	6,009	327,501	348,533	168.5%
Unitil	49,228	2,654	2,633	10,000	15,287	31.1%
LU Gas	25,315	815	2,090	0	2,905	11.5%
Unitil Gas	<u>17,537</u>	<u>0</u>	<u>1,600</u>	<u>3,200</u>	<u>4,800</u>	<u>27.4%</u>
<b>Total</b>	<b>334,991</b>	<b>18,496</b>	<b>13,313</b>	<b>340,701</b>	<b>372,510</b>	<b>111.2%</b>

<b>"Fossil" Fuel Savings by Fuel Type (from Electric Programs)</b>						
Fuel Type	Liberty	NHEC	PSNH	Unitil	Total	Total
	Annual	Annual	Annual	Annual	Annual	Lifetime
	MMBTU	MMBTU	MMBTU	MMBTU	MMBTU	MMBTU
	Savings	Savings	Savings	Savings	Savings	Savings
Oil	0	0	0	2	2	43
NG	0	0	186	0	186	3,562
LP	0	0	391	0	391	11,626
Kerosene	0	0	0	0	0	0
Wood	0	0	123	0	123	2,450
Wood Pellets	0	0	0	0	0	0
Other	0	0	0	0	0	0

Actual = Homes that have been completed, incentives paid and are recorded (booked) in utility accounting system  
 In Process = Customer has signed a Builder Participation Agreement and are in process of building the home.  
 Prospective = Customer/Builder has the Builder Participation Agreement but has not yet signed, but expects to.

**Notes:**

nhsaves@home NH Home Performance w/E	Budget Goal (2014)	Thru 3/31/2014			Total	Percent of Budget/Goal
		Actual	In Process	Prospective		
<b>Program Expenses (\$)</b>						
LU	\$174,579	\$32,816	\$0	\$0	\$32,816	18.8%
NHEC	\$295,292	\$26,302	\$73,382	\$15,104	\$114,787	38.9%
PSNH	\$2,127,844	\$423,673	\$1,140,272	\$437,374	\$2,001,319	94.1%
Unitil	\$216,667	\$43,864	\$72,365	\$126,786	\$243,015	112.2%
LU Gas	\$766,500	\$62,170	\$0	\$0	\$62,170	8.1%
Unitil Gas	<u>\$80,000</u>	<u>\$27,680</u>	<u>\$33,247</u>	<u>\$46,266</u>	<u>\$107,193</u>	<u>134.0%</u>
<b>Total</b>	<b>\$3,660,882</b>	<b>\$616,504</b>	<b>\$1,319,266</b>	<b>\$625,530</b>	<b>\$2,561,300</b>	<b>70.0%</b>
<b>Program Participation</b>						
LU	74	21	0	0	21	28.4%
NHEC	70	5	28	5	38	54.3%
PSNH	1,254	160	430	165	755	60.2%
Unitil	56	11	25	64	100	178.6%
LU Gas	522	52	0	0	52	10.0%
Unitil Gas	<u>19</u>	<u>9</u>	<u>15</u>	<u>20</u>	<u>44</u>	<u>231.6%</u>
<b>Total</b>	<b>1,995</b>	<b>258</b>	<b>498</b>	<b>254</b>	<b>1,010</b>	<b>50.6%</b>
<b>Annual kWh Savings</b>						
LU	18,874	10,617	0	0	10,617	56.3%
NHEC	41,859	3,198	28,252	4,765	36,215	86.5%
PSNH	282,631	218,673	587,684	225,507	1,031,863	365.1%
Unitil	25,207	13,496	22,284	25,392	61,172	242.7%
LU Gas	0	0	0	0	0	0.0%
Unitil Gas	<u>0</u>	<u>0</u>	<u>0</u>	<u>0</u>	<u>0</u>	<u>0.0%</u>
<b>Total</b>	<b>368,571</b>	<b>245,984</b>	<b>638,220</b>	<b>255,664</b>	<b>1,139,867</b>	<b>309.3%</b>
<b>Lifetime kWh Savings</b>						
LU	231,888	238,503	0	0	238,503	102.9%
NHEC	468,010	39,109	402,061	66,844	508,014	108.5%
PSNH	3,092,910	3,938,808	10,585,547	4,061,896	18,586,250	600.9%
Unitil	417,410	231,845	382,861	425,320	1,040,026	249.2%
LU Gas	0	0	0	0	0	0.0%
Unitil Gas	<u>0</u>	<u>0</u>	<u>0</u>	<u>0</u>	<u>0</u>	<u>0.0%</u>
<b>Total</b>	<b>4,210,218</b>	<b>4,448,265</b>	<b>11,370,469</b>	<b>4,554,060</b>	<b>20,372,793</b>	<b>483.9%</b>
<b>Annual MMBTU Savings</b>						
LU	983	0	0	0	0	0.0%
NHEC	1,656	94	821	0	915	55.3%
PSNH	16,200	3,533	11,600	4,450	19,583	120.9%
Unitil	1,803	305	903	1,498	2,706	150.1%
LU Gas	17,160	721	0	0	721	4.2%
Unitil Gas	<u>849</u>	<u>246</u>	<u>433</u>	<u>669</u>	<u>1,348</u>	<u>158.8%</u>
<b>Total</b>	<b>38,651</b>	<b>4,898</b>	<b>13,757</b>	<b>6,617</b>	<b>25,273</b>	<b>65.4%</b>
<b>Lifetime MMBTU Savings (from Oil, Natural Gas, Kerosene, Coal, Wood)</b>						
LU	20,571	0	0	0	0	0.0%
NHEC	32,708	1,789	16,686	0	18,476	56.5%
PSNH	338,515	74,042	243,135	93,250	410,427	121.2%
Unitil	41,273	6,564	19,370	32,584	58,518	141.8%
LU Gas	343,209	16,584	0	0	16,584	4.8%
Unitil Gas	<u>17,928</u>	<u>5,127</u>	<u>9,321</u>	<u>14,191</u>	<u>28,639</u>	<u>159.7%</u>
<b>Total</b>	<b>794,204</b>	<b>104,107</b>	<b>288,512</b>	<b>140,025</b>	<b>532,644</b>	<b>67.1%</b>

Actual = Home Weatherization complete, incentives paid and are recorded (booked) in utility accounting system

In Process = Customer/Utility have signed off on the audit and the job is being scheduled.

Prospective = Customer has told the utility they are interested, lead assigned to Contractor.

**Notes:**

nhsaves@home home energy assistance	Budget Goal (2014)	Thru 3/31/2014				Percent of Budget/Goal
		Actual	In Process	Prospective	Total	
<b>Program Expenses (\$)</b>						
LU	\$325,797	\$26,167	\$69,193	\$0	\$95,361	29.3%
NHEC	\$294,554	\$86,458	\$112,287	\$0	\$198,745	67.5%
PSNH	\$2,835,595	\$624,570	\$228,901	\$53,600	\$907,071	32.0%
Unitil	\$482,762	\$40,997	\$82,360	\$63,487	\$186,844	38.7%
LU Gas	\$923,250	\$243,276	\$0	\$0	\$243,276	26.3%
Unitil Gas	<u>\$232,069</u>	<u>\$11,112</u>	<u>\$6,496</u>	<u>\$100,000</u>	<u>\$117,608</u>	<u>50.7%</u>
<b>Total</b>	<b>\$5,094,027</b>	<b>\$1,032,581</b>	<b>\$499,237</b>	<b>\$217,087</b>	<b>\$1,748,905</b>	<b>34.3%</b>
<b>Program Participation</b>						
LU	40	4	6	0	10	25.0%
NHEC	34	8	18	0	26	76.5%
PSNH	343	151	56	13	220	64.1%
Unitil	92	1	14	26	41	44.6%
LU Gas	182	177	0	0	177	97.3%
Unitil Gas	<u>43</u>	<u>0</u>	<u>1</u>	<u>60</u>	<u>61</u>	<u>141.9%</u>
<b>Total</b>	<b>734</b>	<b>341</b>	<b>95</b>	<b>99</b>	<b>535</b>	<b>72.8%</b>
<b>Annual kWh Savings</b>						
LU	46,487	5,366	20,916	0	26,282	56.5%
NHEC	50,410	8,461	33,427	0	41,888	83.1%
PSNH	394,091	152,218	56,452	13,105	221,775	56.3%
Unitil	72,532	819	18,178	14,138	33,135	45.7%
LU Gas	0	0	0	0	0	0.0%
Unitil Gas	<u>0</u>	<u>0</u>	<u>0</u>	<u>0</u>	<u>0</u>	<u>0.0%</u>
<b>Total</b>	<b>563,520</b>	<b>166,864</b>	<b>128,973</b>	<b>27,243</b>	<b>323,080</b>	<b>57.3%</b>
<b>Lifetime kWh Savings</b>						
LU	718,833	76,389	407,360	0	483,749	67.3%
NHEC	775,937	109,670	542,298	0	651,968	84.0%
PSNH	4,779,714	2,394,534	888,039	206,152	3,488,725	73.0%
Unitil	855,658	5,733	260,131	255,045	520,909	60.9%
LU Gas	0	0	0	0	0	0.0%
Unitil Gas	<u>0</u>	<u>0</u>	<u>0</u>	<u>0</u>	<u>0</u>	<u>0.0%</u>
<b>Total</b>	<b>7,130,142</b>	<b>2,586,326</b>	<b>2,097,828</b>	<b>461,197</b>	<b>5,145,351</b>	<b>72.2%</b>
<b>Annual MMBTU Savings (from Oil, Natural Gas, Kerosene, Coal, Wood)</b>						
LU	899	3	703	0	706	78.5%
NHEC	808	259	521	0	780	96.6%
PSNH	6,858	2,377	884	207	3,469	50.6%
Unitil	1,848	59	376	261	696	37.7%
LU Gas	5,812	2,297	0	0	2,297	39.5%
Unitil Gas	<u>1,829</u>	<u>0</u>	<u>33</u>	<u>1,980</u>	<u>2,013</u>	<u>110.1%</u>
<b>Total</b>	<b>18,054</b>	<b>4,995</b>	<b>2,518</b>	<b>2,448</b>	<b>9,960</b>	<b>55.2%</b>
<b>Program Savings (Lifetime MMBTU Savings from Oil, Natural Gas, Kerosene, Coal, Wood)</b>						
LU	18,391	68	14,182	0	14,250	77.5%
NHEC	10,402	5,554	10,019	0	15,572	149.7%
PSNH	141,114	49,353	18,846	4,413	72,611	51.5%
Unitil	36,614	1,342	8,002	5,127	14,471	39.5%
LU Gas	116,239	50,009	0	0	50,009	43.0%
Unitil Gas	<u>37,039</u>	<u>0</u>	<u>842</u>	<u>42,100</u>	<u>42,942</u>	<u>115.9%</u>
<b>Total</b>	<b>359,799</b>	<b>106,326</b>	<b>51,891</b>	<b>51,640</b>	<b>209,856</b>	<b>58.3%</b>

Actual = Home Weatherization complete, incentives paid and are recorded (booked) in utility accounting system  
In Process = Customer/Utility have signed off on the audit and the job is being scheduled.  
Prospective = Customer has told the utility they are interested, lead assigned to Contractor.

nhsaves@home ENERGY STAR Lighting	Budget Goal (2014)	Thru 3/31/2014				Percent of Budget/Goal
		Actual	In Process	Prospective	Total	
Program Expenses (\$)						
LU	\$108,360	\$6,374	\$0	\$0	\$6,374	5.9%
NHEC	\$127,960	\$66,726	\$22,850	\$0	\$89,576	70.0%
PSNH	\$918,853	\$691,952	\$129,035	\$132,135	\$953,122	103.7%
Unitil	<u>\$225,000</u>	<u>\$42,450</u>	<u>\$49,377</u>	<u>\$0</u>	<u>\$91,827</u>	<u>40.8%</u>
<b>Total</b>	<b>\$1,380,173</b>	<b>\$807,501</b>	<b>\$201,262</b>	<b>\$132,135</b>	<b>\$1,140,899</b>	<b>82.7%</b>
Program Participation						
LU	6,793	7,630	0	0	7,630	112.3%
NHEC	26,974	9,920	3,920	0	13,840	51.3%
PSNH	261,808	105,932	21,142	29,203	156,277	59.7%
Unitil	<u>32,339</u>	<u>5,057</u>	<u>6,353</u>	<u>0</u>	<u>11,410</u>	<u>35.3%</u>
<b>Total</b>	<b>327,914</b>	<b>128,539</b>	<b>31,415</b>	<b>29,203</b>	<b>189,157</b>	<b>57.7%</b>
Annual kWh Savings						
LU	419,266	149,322	0	0	149,322	35.6%
NHEC	451,690	189,881	82,308	0	272,189	60.3%
PSNH	4,040,029	2,039,627	407,071	562,278	3,008,975	74.5%
Unitil	<u>553,921</u>	<u>88,074</u>	<u>127,499</u>	<u>0</u>	<u>215,573</u>	<u>38.9%</u>
<b>Total</b>	<b>5,464,906</b>	<b>2,466,904</b>	<b>616,878</b>	<b>562,278</b>	<b>3,646,059</b>	<b>66.7%</b>
Lifetime kWh Savings						
LU	2,615,391	1,932,299	0	0	1,932,299	73.9%
NHEC	3,757,690	2,457,177	1,247,111	0	3,704,288	98.6%
PSNH	25,209,816	19,428,926	3,877,642	5,356,105	28,662,673	113.7%
Unitil	<u>5,187,643</u>	<u>915,750</u>	<u>1,685,245</u>	<u>0</u>	<u>2,600,995</u>	<u>50.1%</u>
<b>Total</b>	<b>36,770,540</b>	<b>24,734,152</b>	<b>6,809,998</b>	<b>5,356,105</b>	<b>36,900,255</b>	<b>100.4%</b>

Actual = Lighting products purchased, incentives paid and are recorded (booked) in utility accounting system

In Process = Customer received incentive, utility has been billed, but payment has not yet hit the utilities' books.

Prospective = Estimated number of rebates/incentives to be paid over the remaining program period.

(Participant is expressed as number of items rebated.)

**Notes:**

nhsaves@home ENERGY STAR Appliances	Budget Goal (2014)	Thru 3/31/2014			Total	Percent of Budget/Goal
		Actual	In Process	Prospective		
Program Expenses (\$)						
LU	\$222,739	\$5,034	\$0	\$0	\$5,034	2.3%
NHEC	\$350,010	\$45,774	\$30,884	\$0	\$76,659	21.9%
PSNH	\$1,851,137	\$315,173	\$339,911	\$153,765	\$808,849	43.7%
Unitil	\$285,000	\$30,823	\$32,629	\$0	\$63,452	22.3%
LU Gas	\$766,500	\$72,953	\$0	\$0	\$72,953	9.5%
Unitil Gas	<u>\$400,000</u>	<u>\$58,710</u>	<u>\$11,290</u>	<u>\$0</u>	<u>\$70,000</u>	<u>17.5%</u>
<b>Total</b>	<b>\$3,875,386</b>	<b>\$528,467</b>	<b>\$414,714</b>	<b>\$153,765</b>	<b>\$1,096,947</b>	<b>28.3%</b>
Program Participation						
LU	1,656	284	0	0	284	17.1%
NHEC	2,304	427	242	0	669	29.0%
PSNH	16,652	3,002	793	2,009	5,804	34.9%
Unitil	2,512	201	292	0	493	19.6%
LU Gas	1,781	341	0	0	341	19.1%
Unitil Gas	<u>410</u>	<u>40</u>	<u>6</u>	<u>0</u>	<u>46</u>	<u>11.2%</u>
<b>Total</b>	<b>25,315</b>	<b>4,295</b>	<b>1,333</b>	<b>2,009</b>	<b>7,637</b>	<b>30.2%</b>
Annual kWh Savings						
LU	267,130	41,014	0	0	41,014	15.4%
NHEC	422,608	64,670	49,027	0	113,697	26.9%
PSNH	3,040,019	445,623	136,848	294,275	876,746	28.8%
Unitil	307,635	44,768	57,314	0	102,082	33.2%
LU Gas	0	0	0	0	0	0.0%
Unitil Gas	<u>0</u>	<u>0</u>	<u>0</u>	<u>0</u>	<u>0</u>	<u>0.0%</u>
<b>Total</b>	<b>4,037,392</b>	<b>596,075</b>	<b>243,189</b>	<b>294,275</b>	<b>1,133,539</b>	<b>28.1%</b>
Lifetime kWh Savings						
LU	2,832,541	451,667	0	0	451,667	15.9%
NHEC	4,516,778	719,041	510,068	0	1,229,109	27.2%
PSNH	31,957,307	4,955,683	1,559,550	3,264,796	9,780,029	30.6%
Unitil	3,323,237	478,151	630,674	0	1,108,825	33.4%
LU Gas	0	0	0	0	0	0.0%
Unitil Gas	<u>0</u>	<u>0</u>	<u>0</u>	<u>0</u>	<u>0</u>	<u>0.0%</u>
<b>Total</b>	<b>42,629,863</b>	<b>6,604,542</b>	<b>2,700,292</b>	<b>3,264,796</b>	<b>12,569,630</b>	<b>29.5%</b>
Annual MMBTU Savings						
LU	1,491	358	0	0	358	24.0%
NHEC	2,293	423	359	0	782	34.1%
PSNH	12,067	2,566	3,318	1,058	6,942	57.5%
Unitil	1,446	138	284	0	422	29.2%
LU Gas	10,140	4,350	0	0	4,350	42.9%
Unitil Gas	<u>3,964</u>	<u>631</u>	<u>88</u>	<u>0</u>	<u>719</u>	<u>18.1%</u>
<b>Total</b>	<b>31,401</b>	<b>8,466</b>	<b>4,049</b>	<b>1,058</b>	<b>13,573</b>	<b>43.2%</b>
Lifetime MMBTU Savings						
LU	24,691	6,263	0	0	6,263	25.4%
NHEC	38,419	6,598	6,699	0	13,297	34.6%
PSNH	188,374	45,252	60,033	18,729	124,014	65.8%
Unitil	23,594	1,974	4,436	0	6,410	27.2%
LU Gas	173,723	83,220	0	0	83,220	47.9%
Unitil Gas	<u>75,533</u>	<u>12,148</u>	<u>1,692</u>	<u>0</u>	<u>13,840</u>	<u>18.3%</u>
<b>Total</b>	<b>524,334</b>	<b>155,455</b>	<b>72,860</b>	<b>18,729</b>	<b>247,044</b>	<b>47.1%</b>

Actual = Customer purchased appliance, incentives paid and are recorded (booked) in utility accounting system  
 In Process = Customer received incentive, utility has been billed, but payment has not yet hit the utilities' books.  
 Prospective = Estimated number of rebates/incentives to be paid over the remaining program period.

**Notes:**

nhsaves@work Small Business Energy Sol	Budget Goal (2014)	Thru 3/31/2014				Percent of Budget/Goal
		Actual	In Process	Prospective	Total	
<b>Program Expenses (\$)</b>						
LU	\$366,954	\$31,806	\$100,352	\$90,177	\$222,334	60.6%
NHEC	\$356,113	\$42,296	\$52,963	\$114,667	\$209,925	58.9%
PSNH	\$2,397,304	\$455,357	\$139,280	\$590,543	\$1,185,180	49.4%
Unitil	\$456,899	\$154,277	\$102,270	\$0	\$256,547	56.1%
LU Gas	\$998,729	\$164,860	\$573,396	\$0	\$738,256	73.9%
Unitil Gas	<u>\$252,450</u>	<u>\$14,255</u>	<u>\$26,112</u>	<u>\$20,000</u>	<u>\$60,367</u>	<u>23.9%</u>
<b>Total</b>	<b>\$4,828,449</b>	<b>\$862,851</b>	<b>\$994,372</b>	<b>\$815,386</b>	<b>\$2,672,609</b>	<b>55.4%</b>
<b>Program Participation</b>						
LU	166	8	29	35	72	43.4%
NHEC	54	16	16	55	87	161.1%
PSNH	1,120	55	40	127	222	19.8%
Unitil	74	39	12	0	51	68.9%
LU Gas	549	148	169	0	317	57.7%
Unitil Gas	<u>139</u>	<u>4</u>	<u>6</u>	<u>12</u>	<u>22</u>	<u>15.8%</u>
<b>Total</b>	<b>2,102</b>	<b>270</b>	<b>272</b>	<b>229</b>	<b>771</b>	<b>36.7%</b>
<b>Annual kWh Savings</b>						
LU	869,269	132,076	563,859	93,608	789,543	90.8%
NHEC	743,041	99,468	171,996	517,100	788,564	106.1%
PSNH	6,148,629	877,654	667,017	2,229,241	3,773,912	61.4%
Unitil	1,082,745	621,578	313,794	0	935,372	86.4%
LU Gas	0	0	0	0	0	0.0%
Unitil Gas	<u>0</u>	<u>0</u>	<u>0</u>	<u>0</u>	<u>0</u>	<u>0.0%</u>
<b>Total</b>	<b>8,843,684</b>	<b>1,730,776</b>	<b>1,716,666</b>	<b>2,839,949</b>	<b>6,287,392</b>	<b>71.1%</b>
<b>Lifetime kWh Savings</b>						
LU	11,462,209	1,721,350	7,658,563	1,178,919	10,558,831	92.1%
NHEC	9,696,768	1,257,449	2,219,057	6,722,300	10,198,806	105.2%
PSNH	79,998,356	11,596,311	8,813,196	29,454,630	49,864,137	62.3%
Unitil	14,075,640	8,698,732	4,079,322	0	12,778,054	90.8%
LU Gas	0	0	0	0	0	0.0%
Unitil Gas	<u>0</u>	<u>0</u>	<u>0</u>	<u>0</u>	<u>0</u>	<u>0.0%</u>
<b>Total</b>	<b>115,232,973</b>	<b>23,273,842</b>	<b>22,770,138</b>	<b>37,355,849</b>	<b>83,399,828</b>	<b>72.4%</b>
<b>Annual MMBTU Savings</b>						
LU	585	0	0	0	0	0.0%
NHEC	0	0	0	0	0	0.0%
PSNH	3,397	159	0	0	159	4.7%
Unitil	0	0	0	0	0	0.0%
LU Gas	19,897	7,904	8,920	0	16,824	84.6%
Unitil Gas	<u>5,053</u>	<u>106</u>	<u>912</u>	<u>300</u>	<u>1,318</u>	<u>26.1%</u>
<b>Total</b>	<b>28,932</b>	<b>8,169</b>	<b>9,832</b>	<b>300</b>	<b>18,301</b>	<b>63.3%</b>
LED Lighting Seminar (TBD)						
<b>Lifetime MMBTU Savings</b>						
LU	7,869	0	0	0	0	0.0%
NHEC	0	0	0	0	0	0.0%
PSNH	72,016	3,945	0	0	3,945	5.5%
Unitil	0	0	0	0	0	0.0%
LU Gas	355,931	97,768	128,058	0	225,827	63.4%
Unitil Gas	<u>133,704</u>	<u>1,999</u>	<u>19,229</u>	<u>6,500</u>	<u>27,728</u>	<u>20.7%</u>
<b>Total</b>	<b>569,520</b>	<b>103,712</b>	<b>147,287</b>	<b>6,500</b>	<b>257,499</b>	<b>45.2%</b>

Actual = Work has been completed, incentives paid and are recorded (booked) in utility accounting system

In Process = Customer/Utility have a signed off on the audit and the job is being scheduled.

Prospective = An audit has been done, awaiting customer decision/signature.

**Notes:**

nhsaves@work Large Business Retrofit	Budget Goal (2014)	Thru 3/31/2014				Percent of Budget/Goal
		Actual	In Process	Prospective	Total	
<b>Program Expenses (\$)</b>						
LU	\$693,568	\$51,995	\$105,597	\$0	\$157,592	22.7%
NHEC	\$126,799	\$52,499	\$29,241	\$158,965	\$240,705	189.8%
PSNH	\$5,030,637	\$536,599	\$2,350,742	\$1,252,720	\$4,140,061	82.3%
Unitil	\$724,702	\$202,899	\$59,891	\$244,322	\$507,112	70.0%
LU Gas	\$1,394,458	\$266,933	\$299,727	\$0	\$566,660	40.6%
Unitil Gas	\$304,000	\$25,240	\$9,378	\$195,600	\$230,218	75.7%
<b>Total</b>	<b>\$8,274,164</b>	<b>\$1,136,165</b>	<b>\$2,854,575</b>	<b>\$1,851,607</b>	<b>\$5,842,347</b>	<b>70.6%</b>
<b>Program Participation</b>						
LU	85	1	8	0	9	10.6%
NHEC	18	9	3	12	24	133.3%
PSNH	361	23	155	82	260	72.0%
Unitil	25	1	2	5	8	32.0%
LU Gas	188	12	12	0	24	12.8%
Unitil Gas	13	0	0	1	1	7.7%
<b>Total</b>	<b>690</b>	<b>46</b>	<b>180</b>	<b>100</b>	<b>326</b>	<b>47.2%</b>
<b>Annual kWh Savings</b>						
LU	1,607,366	64,505	918,215	0	982,721	61.1%
NHEC	918,003	113,434	294,608	1,261,329	1,669,371	181.8%
PSNH	17,966,636	1,134,292	7,935,010	4,240,635	13,309,937	74.1%
Unitil	2,201,957	401,192	534,180	1,402,271	2,337,643	106.2%
LU Gas	0	0	0	0	0	0.0%
Unitil Gas	0	0	0	0	0	0.0%
<b>Total</b>	<b>22,693,962</b>	<b>1,713,424</b>	<b>9,682,013</b>	<b>6,904,235</b>	<b>18,299,672</b>	<b>80.6%</b>
<b>Lifetime kWh Savings</b>						
LU	21,519,008	967,579	11,936,798	0	12,904,377	60.0%
NHEC	11,934,041	1,515,371	4,029,632	16,397,273	21,942,276	183.9%
PSNH	239,223,246	15,597,622	109,216,798	58,051,457	182,865,877	76.4%
Unitil	30,549,034	6,017,880	6,301,503	27,075,335	39,394,718	129.0%
LU Gas	0	0	0	0	0	0.0%
Unitil Gas	0	0	0	0	0	0.0%
<b>Total</b>	<b>303,225,329</b>	<b>24,098,452</b>	<b>131,484,731</b>	<b>101,524,065</b>	<b>257,107,248</b>	<b>84.8%</b>
<b>Annual MMBTU Savings</b>						
LU	675	0	0	0	0	0.0%
NHEC	0	0	0	0	0	0.0%
PSNH	3,213	165	0	0	165	5.1%
Unitil	-494	0	0	0	0	0.0%
LU Gas	39,920	13,449	9,307	0	22,755	57.0%
Unitil Gas	22,349	0	0	6,006	6,006	26.9%
<b>Total</b>	<b>65,663</b>	<b>13,613</b>	<b>9,307</b>	<b>6,006</b>	<b>28,926</b>	<b>44.1%</b>
<b>Lifetime MMBTU Savings</b>						
LU	9,349	0	0	0	0	0.0%
NHEC	0	0	0	0	0	0.0%
PSNH	80,129	4,934	0	0	4,934	6.2%
Unitil	-7,407	0	0	0	0	0.0%
LU Gas	607,669	175,032	189,259	0	364,291	59.9%
Unitil Gas	387,175	0	0	103,954	103,954	26.8%
<b>Total</b>	<b>1,076,915</b>	<b>179,967</b>	<b>189,259</b>	<b>103,954</b>	<b>473,180</b>	<b>43.9%</b>

Actual = Work has been completed, incentives paid and are recorded (booked) in utility accounting system

In Process = Customer/Utility have a signed rebate form.

Prospective = A Rebate Form has been filled out, awaiting customer decision/signature.

**Notes:**



nhsaves@work New Municipal Prog.	Budget Goal (2014)	Thru 3/31/2014				Percent of Budget/Goal
		Actual	In Process	Prospective	Total	
<b>Program Expenses (\$)</b>						
LU	\$167,337	\$951	\$275	\$0	\$1,226	0.7%
NHEC	\$157,407	\$8,040	\$5,360	\$116,580	\$129,979	82.6%
PSNH	\$1,454,508	\$67,075	\$54,305	\$727,412	\$848,791	58.4%
Unitil	\$220,748	\$8,962	\$1,318	\$57,500	\$67,780	30.7%
LU Gas	\$0	\$0	\$0	\$0	\$0	0.0%
Unitil Gas	\$0	\$0	\$0	\$0	\$0	0.0%
<b>Total</b>	<b>\$2,000,000</b>	<b>\$85,028</b>	<b>\$61,258</b>	<b>\$901,491</b>	<b>\$1,047,777</b>	<b>52.4%</b>
<b>Program Participation</b>						
LU	24	0	1	0	1	4.2%
NHEC	28	2	3	35	40	142.9%
PSNH	383	3	14	17	34	8.9%
Unitil	24	2	0	2	4	16.7%
LU Gas	0	0	0	0	0	0.0%
Unitil Gas	0	0	0	0	0	0.0%
<b>Total</b>	<b>459</b>	<b>7</b>	<b>18</b>	<b>54</b>	<b>79</b>	<b>17.2%</b>
<b>Annual kWh Savings</b>						
LU	357,323	0	0	0	0	0.0%
NHEC	367,268	13,123	32,630	440,070	485,823	132.3%
PSNH	3,474,828	237,542	1,108,529	1,346,071	2,692,143	77.5%
Unitil	444,085	20,075	0	100,000	120,075	27.0%
LU Gas	0	0	0	0	0	0.0%
Unitil Gas	0	0	0	0	0	0.0%
<b>Total</b>	<b>4,643,504</b>	<b>270,740</b>	<b>1,141,159</b>	<b>1,886,141</b>	<b>3,298,041</b>	<b>71.0%</b>
<b>Lifetime kWh Savings</b>						
LU	4,826,269	0	0	0	0	0.0%
NHEC	4,774,486	170,599	379,698	4,940,391	5,490,688	115.0%
PSNH	44,373,514	3,088,046	14,410,881	17,498,927	34,997,855	78.9%
Unitil	5,770,953	260,975	0	1,500,000	1,760,975	30.5%
LU Gas	0	0	0	0	0	0.0%
Unitil Gas	0	0	0	0	0	0.0%
<b>Total</b>	<b>59,745,222</b>	<b>3,519,620</b>	<b>14,790,579</b>	<b>23,939,318</b>	<b>42,249,518</b>	<b>70.7%</b>
<b>Annual MMBTU Savings</b>						
LU	444	0	1,895	0	1,895	426.8%
NHEC	14	0	0	0	0	0.0%
PSNH	2,276	16	0	0	16	0.7%
Unitil	393	0	0	0	0	0.0%
LU Gas	0	0	0	0	0	0.0%
Unitil Gas	0	0	0	0	0	0.0%
<b>Total</b>	<b>3,127</b>	<b>16</b>	<b>1,895</b>	<b>0</b>	<b>1,911</b>	<b>61.1%</b>
<b>Lifetime MMBTU Savings</b>						
LU	9,640	0	28,425	0	28,425	294.9%
NHEC	352	0	0	0	0	0.0%
PSNH	48,011	290	0	0	290	0.6%
Unitil	8,414	0	0	0	0	0.0%
LU Gas	0	0	0	0	0	0.0%
Unitil Gas	0	0	0	0	0	0.0%
<b>Total</b>	<b>66,417</b>	<b>290</b>	<b>28,425</b>	<b>0</b>	<b>28,715</b>	<b>43.2%</b>

Actual = Work has been completed, incentives paid and are recorded (booked) in utility accounting system

In Process = Customer/Utility have a signed rebate form.

Prospective = A Rebate Form has been filled out, awaiting customer decision/signature.

**Notes:**

Utility Specific Programs	Budget Goal (2014)	Thru 3/31/2014				Percent of Budget/Goal
		Actual	In Process	Prospective	Total	
<b>Program Expenses (\$)</b>						
LU Educational Programs	\$16,328	\$0	\$0	\$0	\$0	0.0%
NHEC Educational Programs	\$34,242	\$2,199	\$1,400	\$0	\$3,599	10.5%
PSNH Educational Programs	\$224,516	\$7,062	\$28,000	\$80,500	\$115,562	51.5%
Unitil Educational Programs	\$70,600	\$4,680	\$1,768	\$0	\$6,448	9.1%
LU Gas Educational Programs	\$32,314	\$0	\$0	\$0	\$0	0.0%
Unitil Gas Educational Programs	\$16,000	\$1,286	\$1,110	\$0	\$2,396	15.0%
<b>Total</b>	<b>\$394,000</b>	<b>\$15,227</b>	<b>\$32,278</b>	<b>\$80,500</b>	<b>\$128,005</b>	<b>32.5%</b>

Notes

**1. NH Energy Code (IECC2009) and Beyond Code Workshops (Residential & Business)**

2014 workshops being scheduled  
 See [www.nhenergycode.com](http://www.nhenergycode.com)

**2. Residential Energy Efficiency Programs**

Jan 28: NH Home Builders on utility residential programs with an emphasis on ENERGY STAR Homes  
 May 3: Energy Star Open House in Claremont, NH <http://www.psnh.com/NewsEvents/Seminars.aspx>  
 Jun 5: HVAC Design Step 3: Duct Design, All Day <https://www1.gotomeeting.com/register/608618081>  
 Jun 10: Leveraging ENERGY STAR through Social Media, 12-12:45 <https://www1.gotomeeting.com/register/358409400>  
 Jun 19: Stepping up from HERS Index to ENERGY STAR, 12-12:45 <https://www1.gotomeeting.com/register/833101712>  
 Jun 25: Air Sealing Done Right, 12-12:45 <https://www1.gotomeeting.com/register/336928168>

**Button Up NH Home Weatherization Workshops**

Jan 23: Durham                      Mar 27: Bristol <http://myenergyplan.net/buttonup/>  
 Jan 25: Keene                        Apr 9: Manchester at PSNH  
 Feb 19: Plainfield                Apr 10: Dummer  
 Feb 25: Salem                    Apr 16: Twin Mountain  
 Feb 27: Warner                     Apr 29: Conway  
 Mar 25: New London            Apr 30: Rochester  
 Mar 26: Manchester             Sep 17: Concord

**2. Commercial Energy Auditing / BOC Classes, Aug-Dec 2013.**

<u>Commercial Energy Auditing (Manchester)</u>	<u>Building Operator Certification (Laconia w/ LRCC)</u>
Apr 15: Intro to Energy Audits Part 1	Feb 14: Building Operations and Systems
Apr 16: Intro to Energy Audits Part 2	Feb 28: Building Energy Conservation
Apr 30: Lighting	Mar 14: Lighting Theory and Efficiency
May 1: Tools of the Trade	Mar 28: HVAC Controls and Operation I
May 20: HVAC	Apr 11: HVAC Controls and Operation II
May 21: Building Shell	Apr 25: Indoor Air Quality Theory and Techniques
Jun 4: Final Audit Presentations by Attendees	May 9: Electrical Systems and Distribution
	May 23: Energy Management Planning
See <a href="https://www.psnh.com/NewsEvents/Seminars.aspx">https://www.psnh.com/NewsEvents/Seminars.aspx</a>	See <a href="http://www.lrcc.edu/efficiency-training/calendar">http://www.lrcc.edu/efficiency-training/calendar</a>

**3. Commercial, Industrial & Municipal Seminars - Fall Series**

Apr 23: Energy Efficiency: The Untapped Profit Center  
 Sep 23: LED's - The Time is Now

See <https://www.psnh.com/NewsEvents/Seminars.aspx>

**4. K-12 Education Programs [Wilson Education Programs, APT's Lights for Learning]**

being scheduled

Utility Specific Programs		Budget Goal (2014)	Actual	Thru 3/31/2014		Total	Percent of Budget/Goal
				In Process	Prospective		
<b>Program Expenses (\$)</b>							
LU	Company Specific Pgms / FCM V	\$15,000	\$2,604	\$0	\$0	\$2,604	17.4%
NHEC	Smart Start Program	\$10,272	\$694	\$0	\$0	\$694	6.8%
NHEC	High Efficiency Heat Pump Pgm	\$53,554	\$564	\$4,500	\$13,511	\$18,575	34.7%
PSNH	Smart Start Program	\$45,000	\$9,146	\$10,286	\$21,857	\$41,289	91.8%
PSNH	ES Homes - Geothermal	\$302,239	\$18,638	\$65,231	\$163,079	\$246,948	81.7%
PSNH	Customer Engagement Program	\$226,839	\$47,464	\$92,200	\$52,500	\$192,164	84.7%
PSNH	C&I Customer Partnerships	\$20,560	\$0	\$7,292	\$13,268	\$20,560	100.0%
PSNH	C&I RFP Program	\$551,010	\$15,321	\$0	\$589,834	\$605,155	109.8%
LU Gas	Building Practices & Demo	\$193,500	\$422	\$0	\$0	\$422	0.2%
Unitil Gas	Building Practices & Demo	\$17,000	\$0	\$0	\$500	\$500	2.9%
<b>Total</b>		<b>\$1,434,974</b>	<b>\$94,853</b>	<b>\$179,509</b>	<b>\$854,549</b>	<b>\$1,128,911</b>	<b>78.7%</b>
<b>Program Participation</b>							
LU	Company Specific Pgms / FCM V	0	0	0	0	0	0.0%
NHEC	Smart Start Program	0	1	0	0	1	0.0%
NHEC	High Efficiency Heat Pump Pgm	6	0	1	3	4	66.7%
PSNH	Smart Start Program	0	10	8	17	35	0.0%
PSNH	ES Homes - Geothermal	42	4	14	35	53	125.3%
PSNH	Customer Engagement Program	25,000	25,000	0	0	25,000	100.0%
PSNH	C&I Customer Partnerships	6	0	0	0	0	0.0%
PSNH	C&I RFP Program	14	0	0	17	17	119.0%
Unitil Gas	Building Practices & Demo	0	0	0	0	0	0.0%
<b>Total</b>		<b>25,069</b>	<b>25,015</b>	<b>23</b>	<b>72</b>	<b>25,110</b>	<b>100.2%</b>
<b>Program Savings (Lifetime kWh)</b>							
LU	Company Specific Pgms / FCM V	0	0	0	0	0	0.0%
NHEC	Smart Start Program	0	0	0	0	0	0.0%
NHEC	High Efficiency Heat Pump Pgm	3,846,223	0	265,850	511,755	777,605	20.2%
PSNH	Smart Start Program	0	0	0	0	0	0.0%
PSNH	ES Homes - Geothermal	11,830,206	1,498,000	5,243,000	13,107,500	19,848,500	167.8%
PSNH	Customer Engagement Program	1,896,000	0	0	1,659,000	1,659,000	87.5%
PSNH	C&I Customer Partnerships	0	0	0	0	0	0.0%
PSNH	C&I RFP Program	28,086,342	0	0	52,082,436	52,082,436	185.4%
Unitil Gas	Building Practices & Demo	0	0	0	0	0	0.0%
<b>Total</b>		<b>45,658,771</b>	<b>1,498,000</b>	<b>5,508,850</b>	<b>67,360,691</b>	<b>74,367,541</b>	<b>162.9%</b>

Notes

TOTAL CORE Energy Efficiency Program Results (SBC + 2014 EEF/RGGI Funds)  
 NH CORE Energy Efficiency Programs  
 January 1 - March 31, 2014 Reporting Period

Method # 2, using MWH & MMBtu (million Btus)					
Reductions from	Enter Reductions in Units shown in next Column (Annual MMBtu savings)	Units	CO2 Emission Factors in lbs/unit	Estimated CO2 Emission Reductions in pounds (lbs.)	Estimated CO2 Emission Reductions in Metric Tons
Electricity	7,292	MWH	1,087	7,926,335	3,595
Natural Gas	30,345	MMBtu	117.1	3,553,437	1,612
Distillate Fuel Oil (#1, 2 & 4)	5,302	MMBtu	161.4	855,672	388
Residual Fuel Oil (#5 & 6)	0	MMBtu	173	0	0
Kerosene	684	MMBtu	159.5	109,033	49
LPG	0	MMBtu	139	0	0
Propane	2,626	MMBtu	139.2	365,488	166
Wood or Wood Pellet	848	MMBtu		0	0
Other	0	MMBtu			
<b>TOTAL</b>					<b>5,810</b>

Electric Line Loss 1.08

Source of CO2 Emission Factors in lbs/unit: <http://www.eia.doe.gov/cneaf/electricity/epa/epata3.html>

NH Core Energy Efficiency Programs  
 NHPUC Docket No. DE 12-262  
 NH CO2 Lifetime Emission Reductions

TOTAL CORE Energy Efficiency Program Results (SBC + 2014 EEF/RGGI Funds)  
 NH CORE Energy Efficiency Programs  
 January 1 - March 31, 2014 Reporting Period

Method # 2, using MWH & MMBtu (million Btus)					
Reductions from	Enter Reductions in Units shown in next Column (Annual MMBtu savings)	Units	CO2 Emission Factors in lbs/unit	Estimated CO2 Emission Reductions in pounds (lbs.)	Estimated CO2 Emission Reductions in Metric Tons
Electricity	542,952	MWH	1,087	590,189,168	267,659
Natural Gas	977,512	MMBtu	117.1	114,466,709	51,912
Distillate Fuel Oil (#1, 2 & 4)	108,753	MMBtu	161.4	17,552,666	7,960
Residual Fuel Oil (#5 & 6)	0	MMBtu	173	0	0
Kerosene	13,578	MMBtu	159.5	2,165,699	982
LPG	0	MMBtu	139	0	0
Propane	57,087	MMBtu	139.2	7,946,445	3,604
Wood or Wood Pellet	17,759	MMBtu		0	0
Other	0	MMBtu			
<b>TOTAL</b>					<b>332,118</b>

Electric Line Loss 1.08

Source of CO2 Emission Factors in lbs/unit: <http://www.eia.doe.gov/cneaf/electricity/epa/epata3.html>

**Allocation Between System Benefit Charge and Energy Efficiency Fund  
 As filed with the NHPUC on December 3, 2013**

**Program Allocation Summary**

<b>Program</b>	<b>RGGI</b>	<b>SBC</b>	<b>TOTAL</b>
<b>HEA<sup>1</sup></b>			
LU-Electric	20.9013%	79.0987%	100.0000%
NHEC	19.9803%	80.0197%	100.0000%
PSNH	20.7434%	79.2566%	100.0000%
Unitil	18.6076%	81.3924%	100.0000%
<b>Municipal</b>			
LU-Electric	100.0000%	0.0000%	100.0000%
NHEC	100.0000%	0.0000%	100.0000%
PSNH	100.0000%	0.0000%	100.0000%
Unitil	100.0000%	0.0000%	100.0000%
<b>All Other Programs</b>			
LU-Electric	87.0981%	12.9019%	100.0000%
NHEC	88.3517%	11.6483%	100.0000%
PSNH	87.3569%	12.6431%	100.0000%
Unitil	89.6064%	10.3936%	100.0000%

TOTAL PROGRAM FUNDING

New Hampshire CORE Energy Efficiency Actual Expenditures- 2014

PROGRAMS	LU Electric	NHEC	PSNH	UNITIL	TOTALS					
<b>ENERGY STAR Homes</b>										
Number of Homes / Lifetime kWh Savings	1	115	1	259,936	15	398,652	1	283,717	18	942,420
Actual \$ Spent / Lifetime MMBTU Savings	\$1,397	0	\$16,739	4	\$109,506	15,023	\$12,378	2,654	\$140,020	17,681
<b>ENERGY STAR Lighting</b>										
Number of Units / Lifetime kWh Savings	7,630	1,932,299	9,920	2,457,177	105,932	19,428,926	5,057	915,750	128,539	24,734,152
Actual \$ Spent / Lifetime MMBTU Savings	\$6,374	0	\$66,726	0	\$691,952	0	\$42,450	0	\$807,501	0
<b>ENERGY STAR Appliances</b>										
Number of Rebates / Lifetime kWh Savings	284	451,667	427	719,041	3,002	4,955,683	201	478,151	3,914	6,604,542
Actual \$ Spent / Lifetime MMBTU Savings	\$5,034	6,263	\$45,774	6,598	\$315,173	45,252	\$30,823	1,974	\$396,805	60,087
<b>Home Performance w/ENERGY STAR</b>										
Number of Rebates / Lifetime kWh Savings	21	238,503	5	39,109	160	3,938,808	11	231,845	197	4,448,265
Actual \$ Spent / Lifetime MMBTU Savings	\$32,816	0	\$26,302	1,789	\$423,673	74,042	\$43,864	6,564	\$526,654	82,396
<b>Home Energy Assistance</b>										
Number of Units / Lifetime kWh Savings	4	76,389	8	109,670	151	2,394,534	1	5,733	164	2,586,326
Actual \$ Spent / Lifetime MMBTU Savings	\$26,167	68	\$86,458	5,554	\$624,570	49,353	\$40,997	1,342	\$778,193	56,316
<b>Large Business Energy Solutions</b>										
Number of Participants / Lifetime kWh Savings	1	967,579	9	1,515,371	23	15,597,622	1	6,017,880	34	24,098,452
Actual \$ Spent / Lifetime MMBTU Savings	\$51,995	0	\$52,499	0	\$536,599	4,934	\$202,899	0	\$843,992	4,934
<b>Small Business Energy Solutions</b>										
Number of Participants / Lifetime kWh Savings	8	1,721,350	16	1,257,449	55	11,596,311	39	8,698,732	118	23,273,842
Actual \$ Spent / Lifetime MMBTU Savings	\$31,806	0	\$42,296	0	\$455,357	3,945	\$154,277	0	\$683,736	3,945
<b>Municipal Program</b>										
Number of Participants / Lifetime kWh Savings	0	0	2	170,599	3	3,088,046	2	260,975	7	3,519,620
Actual \$ Spent / Lifetime MMBTU Savings	\$951	0	\$8,040	0	\$67,075	290	\$8,962	0	\$85,028	290
<b>Educational Programs</b>										
Actual \$ Spent	\$0		\$2,199		\$7,062		\$4,680		\$13,941	
<b>Company Specific Programs / ISO-NE FCM Work</b>										
Number of Participants / Lifetime kWh Savings	0	0	0	0	25,004	1,498,000	0	0	25,004	1,498,000
Actual \$ Spent / Lifetime MMBTU Savings	\$2,604	0	\$564	0	\$103,138	0	\$2,670		\$108,976	0
<b>Smart Start (NHEC/PSNH), RGGI RLF (UES)</b>										
Actual \$ Spent			\$694		\$9,146		\$7,192		\$17,032	
<b>Total SBC &amp; RGGI Spent Through March 31, 2014</b>	<b>\$159,143</b>		<b>\$348,292</b>		<b>\$3,343,250</b>		<b>\$551,191</b>		<b>\$4,401,876</b>	

**New Hampshire CORE Energy Efficiency Actual Expenditures - SBC**  
**January 1, 2014 - March 31, 2014**

PROGRAMS	LU Electric		NHEC		PSNH		UNITIL		TOTALS	
<b>ENERGY STAR Homes</b>										
Number of Homes / Lifetime kWh Savings	1	100	1	229,658	13	348,250	1	254,229	16	832,237
Actual \$ Spent / Lifetime MMBTU Savings	\$1,216	0	\$14,790	3	\$95,661	13,124	\$11,091	2,378	\$122,758	15,505
<b>ENERGY STAR Lighting</b>										
Number of Units / Lifetime kWh Savings	6,646	1,682,996	8,764	2,170,958	92,539	16,972,514	4,531	820,571	112,480	21,647,039
Actual \$ Spent / Lifetime MMBTU Savings	\$5,552	0	\$58,953	0	\$604,468	0	\$38,038	0	\$707,011	0
<b>ENERGY STAR Appliances</b>										
Number of Rebates / Lifetime kWh Savings	247	393,394	377	635,285	2,622	4,329,133	180	428,454	3,427	5,786,265
Actual \$ Spent / Lifetime MMBTU Savings	\$4,385	5,455	\$40,442	5,829	\$275,325	39,531	\$27,619	1,769	\$347,772	52,584
<b>Home Performance w/ENERGY STAR</b>										
Number of Rebates / Lifetime kWh Savings	18	207,732	4	34,553	140	3,440,822	10	207,748	172	3,890,855
Actual \$ Spent / Lifetime MMBTU Savings	\$28,582	0	\$23,238	1,581	\$370,108	64,681	\$39,305	5,882	\$461,232	72,144
<b>Home Energy Assistance<sup>1</sup></b>										
Number of Units / Lifetime kWh Savings	3	60,423	6	87,758	120	1,897,827	1	4,666	130	2,050,673
Actual \$ Spent / Lifetime MMBTU Savings	\$20,698	54	\$69,184	4,444	\$495,013	39,115	\$33,368	1,092	\$618,263	44,705
<b>Large Business Energy Solutions</b>										
Number of Participants / Lifetime kWh Savings	1	842,743	8	1,338,856	20	13,625,604	1	5,392,406	30	21,199,609
Actual \$ Spent / Lifetime MMBTU Savings	\$45,287	0	\$46,384	0	\$468,756	4,311	\$181,810	0	\$742,238	4,311
<b>Small Business Energy Solutions</b>										
Number of Participants / Lifetime kWh Savings	7	1,499,263	14	1,110,978	48	10,130,181	35	7,794,621	104	20,535,044
Actual \$ Spent / Lifetime MMBTU Savings	\$27,702	0	\$37,369	0	\$397,786	3,446	\$138,242	0	\$601,099	3,446
<b>Educational Programs</b>										
Actual \$ Spent	\$0		\$1,943		\$6,169		\$4,193		\$12,305	
<b>Company Specific Programs / ISO-NE FCM Work</b>										
Number of Participants / Lifetime kWh Savings	0	0	0	0	21,843	1,308,607			21,843	1,308,607
Actual \$ Spent / Lifetime MMBTU Savings	\$2,268	0	\$499		\$90,098		\$2,392		\$95,257	0
<b>Smart Start (NHEC/PSNH), Res. Financing (UES)</b>										
Actual \$ Spent			\$613		\$7,990		\$6,444		\$15,047	
<b>Total SBC Spent Through March 31, 2014</b>	<b>\$135,689</b>		<b>\$293,415</b>		<b>\$2,811,374</b>		<b>\$482,505</b>		<b>\$3,722,982</b>	



**New Hampshire CORE Energy Efficiency Actual Expenditures -RGGI  
January 1, 2014 - March 31, 2014**

PROGRAMS	LU Electric		NHEC		PSNH		UNITIL		TOTALS	
<b>ENERGY STAR Homes</b>										
Number of Homes / Lifetime kWh Savings	0	15	0	30,278	2	50,402	0	29,488	2	110,183
Actual \$ Spent / Lifetime MMBTU Savings	\$180	0	\$1,950	0	\$13,845	1,899	\$1,287	276	\$17,261	2,176
<b>ENERGY STAR Lighting</b>										
Number of Units / Lifetime kWh Savings	984	249,303	1,156	286,219	13,393	2,456,413	526	95,180	16,059	3,087,115
Actual \$ Spent / Lifetime MMBTU Savings	\$822	0	\$7,772	0	\$87,484	0	\$4,412	0	\$100,491	0
<b>ENERGY STAR Appliances</b>										
Number of Rebates / Lifetime kWh Savings	37	58,274	50	83,756	380	626,551	21	49,697	487	818,277
Actual \$ Spent / Lifetime MMBTU Savings	\$649	808	\$5,332	769	\$39,848	5,721	\$3,204	205	\$49,033	7,503
<b>Home Performance w/ENERGY STAR</b>										
Number of Rebates / Lifetime kWh Savings	3	30,771	1	4,556	20	497,986	1	24,097	25	557,410
Actual \$ Spent / Lifetime MMBTU Savings	\$4,234	0	\$3,064	208	\$53,565	9,361	\$4,559	682	\$65,422	10,252
<b>Home Energy Assistance<sup>1</sup></b>										
Number of Units / Lifetime kWh Savings	1	15,966	2	21,912	31	496,707	0	1,067	34	535,653
Actual \$ Spent / Lifetime MMBTU Savings	\$5,469	14	\$17,275	1,110	\$129,557	10,237	\$7,629	250	\$159,929	11,611
<b>Large Business Energy Solutions</b>										
Number of Participants / Lifetime kWh Savings	0	124,836	1	176,515	3	1,972,019	0	625,475	4	2,898,845
Actual \$ Spent / Lifetime MMBTU Savings	\$6,708	0	\$6,115	0	\$67,843	624	\$21,089	0	\$101,755	624
<b>Small Business Energy Solutions</b>										
Number of Participants / Lifetime kWh Savings	1	222,087	2	146,471	7	1,466,130	4	904,113	14	2,738,801
Actual \$ Spent / Lifetime MMBTU Savings	\$4,104	0	\$4,927	0	\$57,571	499	\$16,035	0	\$82,636	499
<b>New Municipal Program</b>										
Number of Participants / Lifetime kWh Savings	0	0	2	170,599	3	3,088,046	2	260,975	7	3,519,620
Actual \$ Spent / Lifetime MMBTU Savings	\$951	0	\$8,040	0	\$67,075	290	\$8,962	0	\$85,028	290
<b>Educational Programs</b>										
Actual \$ Spent	\$0		\$256		\$893		\$486		\$1,635	
<b>Company Specific Programs / ISO-NE FCM Work</b>										
Number of Participants / Lifetime kWh Savings	0	0	0	0	3,161	189,393	0	0	3,161	189,393
Actual \$ Spent / Lifetime MMBTU Savings	\$336	0	\$66	0	\$13,040	0	\$277	0	\$13,719	0
	0									
<b>Smart Start (NHEC/PSNH), Res. Financing (UES)</b>										
Actual \$ Spent	\$0		\$81		\$1,156		\$748		\$1,985	
<b>Total RGGI Spent Through March 31, 2014</b>	<b>\$23,454</b>		<b>\$54,877</b>		<b>\$531,876</b>		<b>\$68,687</b>		<b>\$678,894</b>	

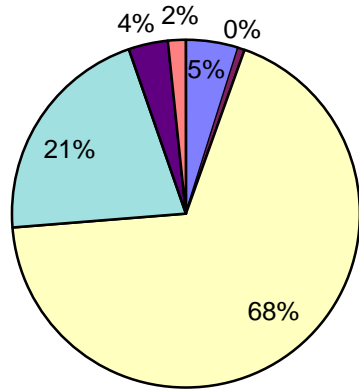
Jan-Mar 2014

## NH CORE Energy Efficiency Program - 2014 Expenditures

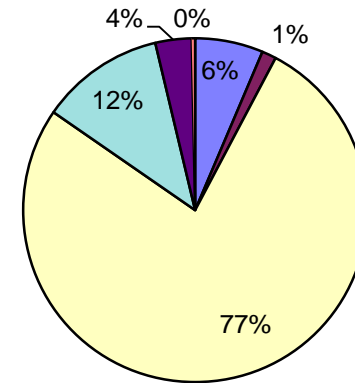
		(see Note 1)						
		<u>Internal Adm</u>	<u>External Adm</u>	<u>Cust Rebts/Services</u>	<u>Internal Impl.</u>	<u>Marketing</u>	<u>Evaluation</u>	<u>Total</u>
ENERGY STAR Homes		\$ 12,334	\$ 454	\$ 81,927	\$ 42,986	\$ 1,117	\$ 1,202	\$ 140,020
	Liberty Utilities	175	-	52	1,142	22	6	1,397
	NHEC	766	114	5,155	10,488	201	16	16,739
	PSNH	9,164		72,394	26,270	705	972	109,506
	Unitil	2,229	340	4,326	5,086	189	208	12,378
Home Performance w/Energy Star		\$ 25,646	\$ 3,211	\$ 359,421	\$ 110,367	\$ 19,307	\$ 8,701	\$ 526,654
	Liberty Utilities	65	-	25,274	7,425	40	11	32,816
	NHEC	1,290	191	12,816	11,217	339	448	26,302
	PSNH	20,894	28	296,037	80,025	18,655	8,034	423,673
	Unitil	3,397	2,992	25,294	11,700	273	208	43,864
Energy Star Appliances		\$ 25,392	\$ 5,300	\$ 305,114	\$ 46,192	\$ 13,524	\$ 1,281	\$ 396,804
	Liberty Utilities	1,102	-	120	2,055	1,744	13	5,034
	NHEC	2,430	360	31,301	10,742	890	50	45,774
	PSNH	18,050		263,643	22,182	10,418	880	315,173
	Unitil	3,810	4,940	10,050	11,212	473	337	30,822
Home Energy Assistance		\$ 38,705	\$ 2,705	\$ 647,333	\$ 79,400	\$ 1,253	\$ 8,800	\$ 778,195
	Liberty Utilities	637	-	20,346	5,153	12	19	26,167
	NHEC	4,719	700	64,443	14,836	1,241	519	86,458
	PSNH	26,954		549,669	40,155		7,793	624,570
	Unitil	6,395	2,005	12,875	19,255	0	469	40,999
ENERGY STAR Lighting		\$ 15,803	\$ 6,995	\$ 553,443	\$ 50,643	\$ 179,145	\$ 1,472	\$ 807,501
	Liberty Utilities	34	-	442	852	5,040	7	6,374
	NHEC	3,647	541	49,087	11,244	2,132	76	66,726
	PSNH	8,733		486,820	27,831	167,412	1,155	691,952
	Unitil	3,390	6,454	17,094	10,717	4,561	234	42,450
Other Residential Programs		\$ 5,281	\$ 3,156	\$ 30,200	\$ 31,754	\$ 5	\$ 949	\$ 71,345
	Liberty Utilities		-		-			-
	NHEC	21	3	-	535	5	0	564
	PSNH	5,031		30,200	29,922		949	66,102
	Unitil (Home Energy Suite)	229	3,153		1,297			4,679
<b>Total Residential Programs</b>		<b>\$ 123,162</b>	<b>\$ 21,821</b>	<b>\$ 1,977,438</b>	<b>\$ 361,341</b>	<b>\$ 214,352</b>	<b>\$ 22,405</b>	<b>\$ 2,720,520</b>
Large Business Energy Solutions		\$ 63,435	\$ 24,497	\$ 468,978	\$ 259,405	\$ 21,271	\$ 6,406	\$ 843,993
	Liberty Utilities	2,832	-	21,974	20,690	6,458	42	51,995
	NHEC	2,804	416	38,167	9,922	1,132	58	52,499
	PSNH	50,134		262,071	207,054	13,492	3,848	536,599
	Unitil	7,666	24,081	146,766	21,740	189	2,458	202,900
Small Business Energy Solutions		\$ 31,267	\$ 1,856	\$ 432,883	\$ 176,245	\$ 36,280	\$ 5,205	\$ 683,735
	Liberty Utilities	1,978	-	19,901	5,181	4,724	22	31,806
	NHEC	1,976	293	18,413	20,775	798	41	42,296
	PSNH	22,785		258,952	140,675	29,215	3,729	455,357
	Unitil	4,527	1,563	135,617	9,615	1,542	1,413	154,277
Municipal Program		\$ 15,792	\$ 311	\$ 60,401	\$ 7,233	\$ 1,117	\$ 174	\$ 85,028
	Liberty Utilities	-	-	90	-	851	10	951
	NHEC	378	56	3,598	3,847	153	8	8,040
	PSNH	13,818		53,144		113		67,075
	Unitil	1,596	255	3,569	3,386		156	8,962
Other C&I Programs		\$ 5,377	\$ 22	\$ 6,113	\$ 18,666	\$ 3,555	\$ 689	\$ 34,421
	Liberty Utilities	-	-					-
	NHEC	148	22	1,803	857	60	3	2,893
	PSNH (Education, RFP, Smart Start)	5,229		4,310	17,808	3,495	686	31,529
	Unitil (Education, C&I Energy Suite)							-
<b>Total Non-Residential Programs</b>		<b>\$ 115,871</b>	<b>\$ 26,686</b>	<b>\$ 968,375</b>	<b>\$ 461,549</b>	<b>\$ 62,222</b>	<b>\$ 12,475</b>	<b>\$ 1,647,178</b>
<b>TOTAL (Both Sectors)</b>		<b>\$ 239,033</b>	<b>\$ 48,507</b>	<b>\$ 2,945,813</b>	<b>\$ 822,891</b>	<b>\$ 276,574</b>	<b>\$ 34,879</b>	<b>\$ 4,367,697</b>

Note 1: Evaluation amounts are based on 5% of total budgets. Actual program expenses will vary from numbers shown.

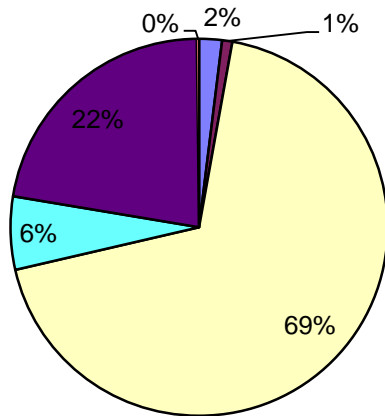
**Home Performance w/Energy Star**



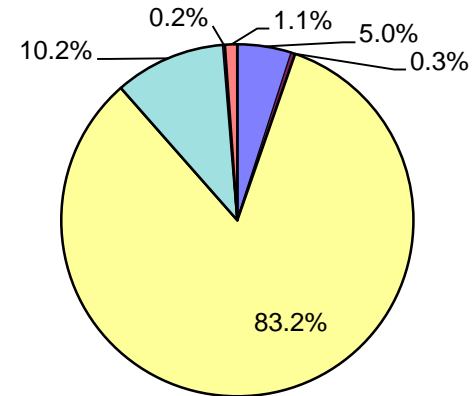
**Energy Star Appliances**



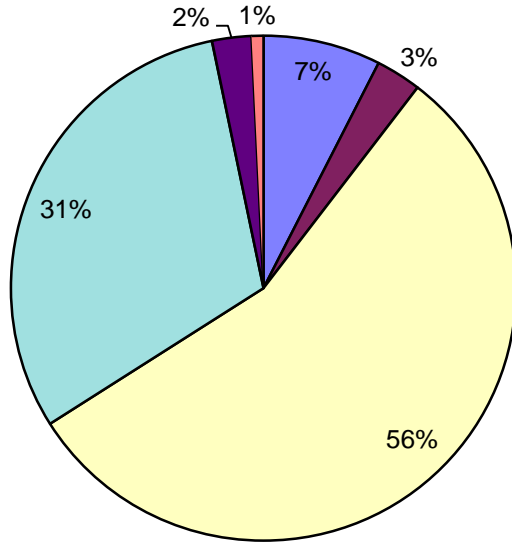
**Energy Star Lighting**



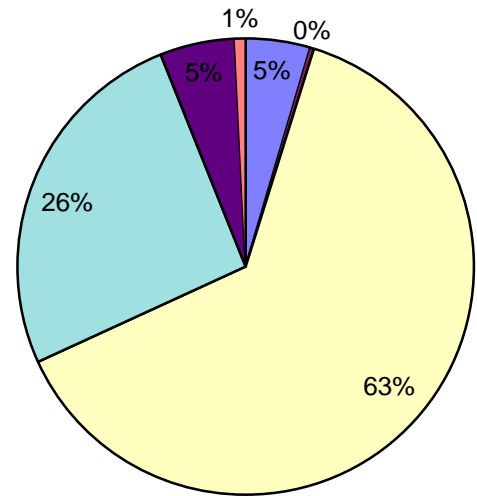
**Home Energy Assistance**



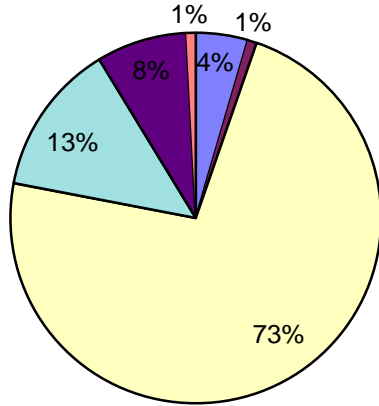
**Large Business Energy Solutions**



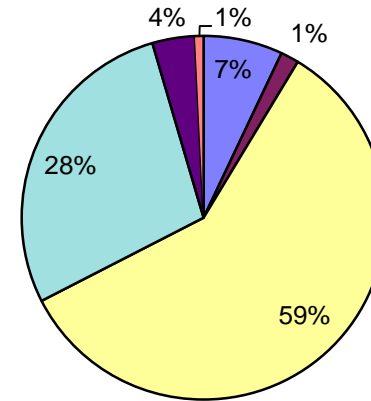
**Small Business Energy Solutions**



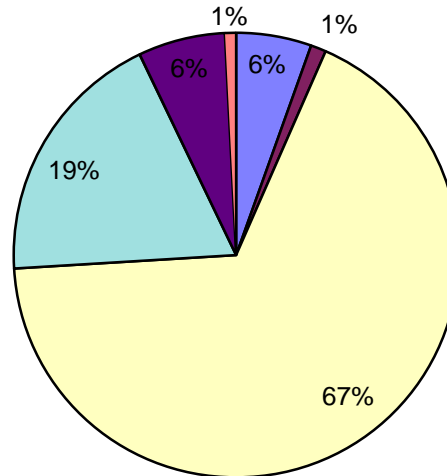
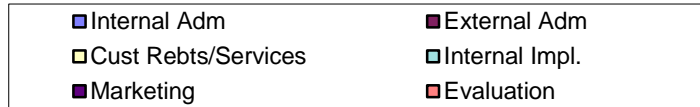
**Total Residential Programs**



**Total Non-Residential Programs**



**Total Residential and Non-Residential Programs**



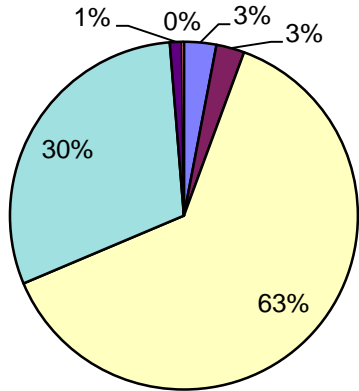
Jan-Mar 2014

## NH CORE Energy Efficiency Program - 2014 Expenditures - GAS

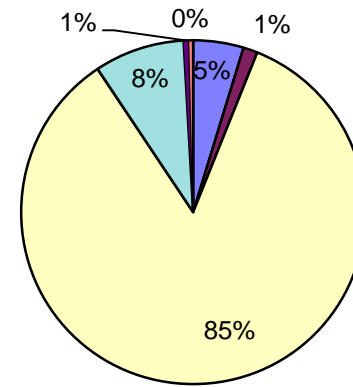
	(see Note 1)						
	<u>Internal Adm</u>	<u>External Adm</u>	<u>Cust Rebts/Services</u>	<u>Internal Impl.</u>	<u>Marketing</u>	<u>Evaluation</u>	<u>Total</u>
ENERGY STAR Homes	\$ 1,570	\$ 293	\$ 6,393	\$ 8,169	\$ 585	\$ 125	\$ 17,135
Liberty Gas	466	-	4,109	5,723	392	6	10,696
Unitil Gas	1,104	293	2,284	2,446	193	119	6,439
Home Performance w/Energy Star	\$ 2,695	\$ 2,359	\$ 56,606	\$ 27,019	\$ 1,006	\$ 165	\$ 89,850
Liberty Gas	1,229	-	37,649	22,518	728	46	62,170
Unitil Gas	1,466	2,359	18,957	4,501	278	119	27,680
Energy Star Appliances	\$ 6,230	\$ 1,757	\$ 111,350	\$ 11,164	\$ 691	\$ 470	\$ 131,662
Liberty Gas	2,919	-	63,675	6,007	305	46	72,952
Unitil Gas	3,311	1,757	47,675	5,157	386	424	58,710
Home Energy Assistance	\$ 5,496	\$ 1,082	\$ 228,309	\$ 19,130	\$ 27	\$ 344	\$ 254,388
Liberty Gas	2,647	-	228,309	12,237	27	56	243,276
Unitil Gas	2,849	1,082	-	6,893	-	288	11,112
Other Residential Programs	\$ -	\$ 1,286	\$ 419	\$ (26)	\$ 39	\$ (10)	\$ 1,708
Liberty Gas	-	-	419	(26)	39	(10)	422
Unitil Gas (Home Energy Suite)	-	1,286	-	-	-	-	1,286
<b><u>Total Residential Programs</u></b>	<b>\$ 15,992</b>	<b>\$ 6,777</b>	<b>\$ 403,078</b>	<b>\$ 65,455</b>	<b>\$ 2,348</b>	<b>\$ 1,094</b>	<b>\$ 494,743</b>
Large Business Energy Solutions	\$ 11,691	\$ 6,428	\$ 242,309	\$ 27,313	\$ 3,088	\$ 1,343	\$ 292,172
Liberty Gas	7,329	-	240,859	15,650	2,895	200	266,933
Unitil Gas	4,362	6,428	1,450	11,663	193	1,143	25,239
Small Business Energy Solutions	\$ 9,652	\$ 838	\$ 129,208	\$ 34,492	\$ 4,526	\$ 400	\$ 179,116
Liberty Gas	6,737	-	124,684	28,853	4,526	60	164,860
Unitil Gas	2,915	838	4,524	5,639	-	340	14,256
Other C&I Programs	\$ 90	\$ -	\$ -	\$ (90)	\$ -	\$ -	\$ -
Liberty Gas	90	-	-	(90)	-	-	-
Unitil Gas	-	-	-	-	-	-	-
<b><u>Total Non-Residential Programs</u></b>	<b>\$ 21,433</b>	<b>\$ 7,266</b>	<b>\$ 371,517</b>	<b>\$ 61,715</b>	<b>\$ 7,614</b>	<b>\$ 1,743</b>	<b>\$ 471,288</b>
<b>TOTAL (Both Sectors)</b>	<b>\$ 37,425</b>	<b>\$ 14,043</b>	<b>\$ 774,595</b>	<b>\$ 127,170</b>	<b>\$ 9,962</b>	<b>\$ 2,837</b>	<b>\$ 966,031</b>

Note 1: Evaluation amounts are based on 5% of total budgets. Actual program expenses will vary from numbers shown.

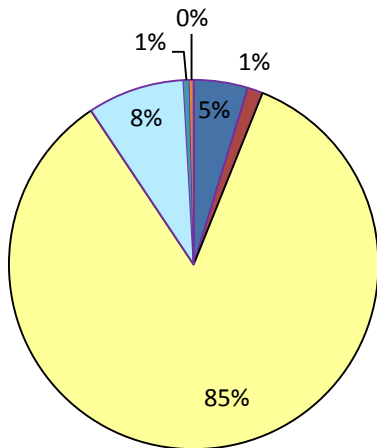
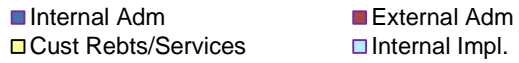
**Home Performance w/Energy Star**



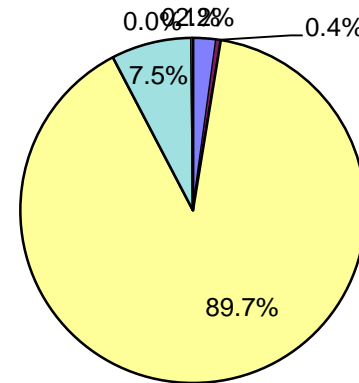
**Energy Star Appliances**



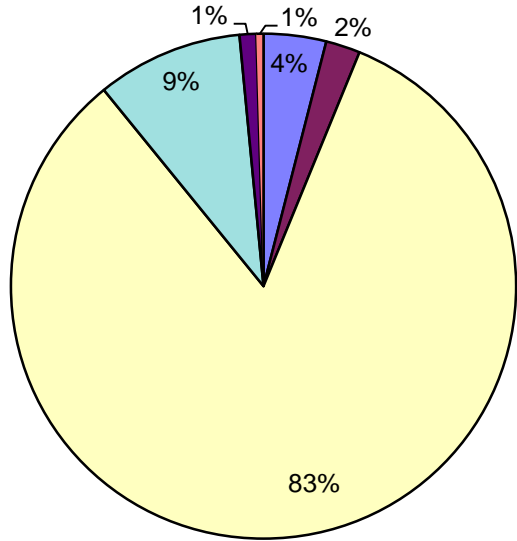
**Energy Star Lighting**



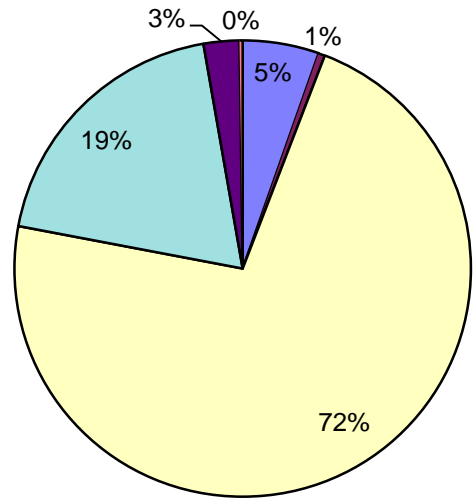
**Home Energy Assistance**



**Large Business Energy Solutions**

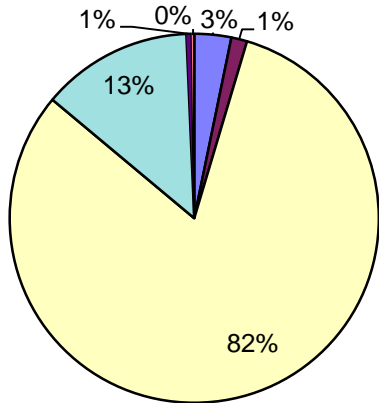


**Small Business Energy Solutions**

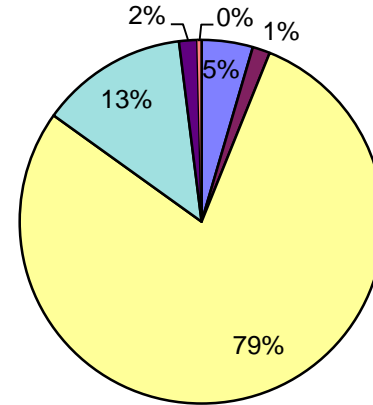




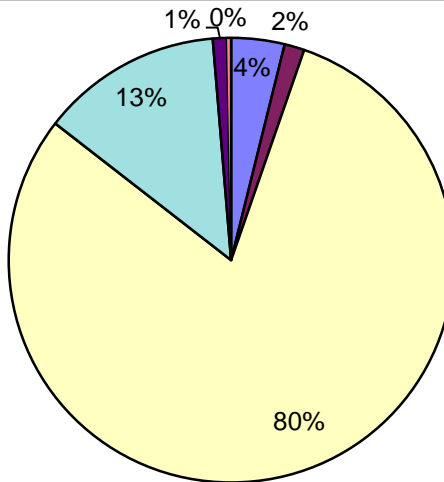
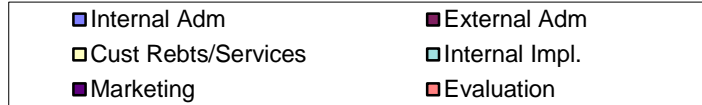
**Total Residential Programs**



**Total Non-Residential Programs**



**Total Residential and Non-Residential Programs**



# *Home Energy Assistance CORE/DOE Combined Funding Effort*

*Completions as of Monday March 31, 2014*

<i>CompanyName</i>	<i>Combined</i>	<i>CORE only</i>	<i>Total</i>	<i>% Collaboration</i>
Statewide	114	207	321	36%
Liberty Utilities	3	2	5	60%
Liberty Utilities-GAS	10	167	177	6%
NHEC	8	2	10	80%
PSNH	89	33	122	73%
UNITIL	4	3	7	57%
UNITIL-GAS	0	0	0	

**Note:** 321 HEA jobs were completed by CAA's. Only 0 jobs, or 0.0% % were completed by non CAA contractors.

# *Home Energy Assistance Statewide County Summary*

*321 Completions as of Monday March 31, 2014*

*Program Year: 2014*

*Funding Source: SBC/LDAC*

<i>County (Totals)</i>	<i>Contract Coordinator</i>	<i>Customers Served</i>
BELKNAP ( 9 )	Belknap-Merrimack Counties CAP	9
CARROLL ( 16 )	Tri-County Community Action	16
CHESHIRE ( 8 )	Southwestern Community Services Inc	8
COOS ( 18 )	Tri-County Community Action	18
GRAFTON ( 4 )	Tri-County Community Action	4
HILLSBOROUGH ( 54 )	Southern NH Services	54
MERRIMACK ( 170 )	Belknap-Merrimack Counties CAP	170
ROCKINGHAM ( 39 )	Southern NH Services	39
STRAFFORD ( 1 )	Strafford County Community Action Weatherization	1
SULLIVAN ( 2 )	Southwestern Community Services Inc	2

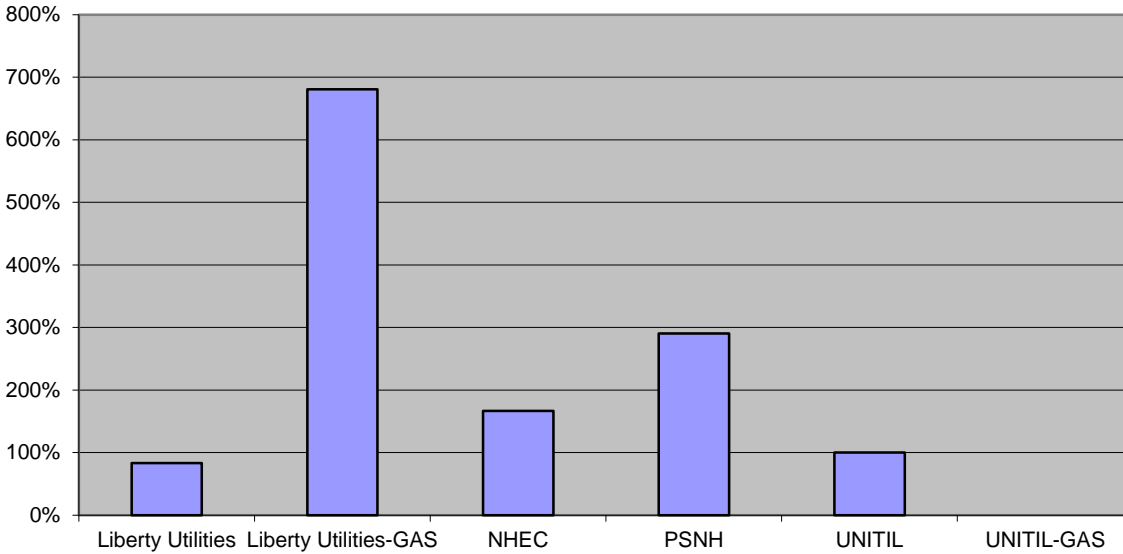
# *2014 Home Energy Assistance Dwelling Mix*

*Completions as of Monday March 31, 2014*

*Funding Source: SBC/LDAC*

<i>Company</i>	<i>Dwelling Type</i>	<i>Jobs</i>
Statewide	Multi-family	182
	Single family	139
	<b>State Total</b>	<b>321</b>
Liberty Utilities	Single family	5
	<b>Liberty Utilities Total</b>	<b>5</b>
Liberty Utilities-GAS	Single family	26
	Multi-family	151
	<b>Liberty Utilities-GAS Total</b>	<b>177</b>
NHEC	Single family	10
	<b>NHEC Total</b>	<b>10</b>
PSNH	Single family	91
	Multi-family	31
	<b>PSNH Total</b>	<b>122</b>
UNITIL	Single family	7
	<b>UNITIL Total</b>	<b>7</b>

**Home Energy Assistance  
Completions  
% of 2014 Q1 Goal  
As of March 31, 2014**



CompanyName	Completions To Date	Q1 Goal	% Of Goal
Liberty Utilities	5	6	83%
Liberty Utilities-GAS	177	26	681%
NHEC	10	6	167%
PSNH	122	42	290%
UNITIL	7	7	100%
UNITIL-GAS	0	7	0%
State	321	94	341%

# *NHSaves Residential Financial Summary*

*HEA Results as of 3/31/2014*

*ProgramYear: 2014*

*Funding Source: SBC/LDAC*

**Liberty Utilities**

**5 Customers Served**

	<i>Installed Measures</i>	<i>Heating Systems*</i>	<i>Total CORE</i>	<i>Collaborated Funds</i>	<i>Co-Pay</i>	<i>Total Funds</i>
<i>Total</i>	\$25,938	\$7,950	<b>\$33,888</b>	\$7,109	\$0	<b>\$40,997</b>
<i>Average</i>	\$5,188	\$7,950	<b>\$6,778</b>	\$1,422	\$0	<b>\$8,199</b>

**Liberty Utilities-GAS**

**177 Customers Served**

	<i>Installed Measures</i>	<i>Heating Systems*</i>	<i>Total CORE</i>	<i>Collaborated Funds</i>	<i>Co-Pay</i>	<i>Total Funds</i>
<i>Total</i>	\$246,251	\$23,990	<b>\$270,241</b>	\$13,225	\$0	<b>\$283,466</b>
<i>Average</i>	\$1,391	\$4,798	<b>\$1,527</b>	\$75	\$0	<b>\$1,602</b>

**NHEC**

**10 Customers Served**

	<i>Installed Measures</i>	<i>Heating Systems*</i>	<i>Total CORE</i>	<i>Collaborated Funds</i>	<i>Co-Pay</i>	<i>Total Funds</i>
<i>Total</i>	\$62,048	\$13,995	<b>\$76,043</b>	\$9,321	\$0	<b>\$85,364</b>
<i>Average</i>	\$6,205	\$3,499	<b>\$7,604</b>	\$932	\$0	<b>\$8,536</b>

**PSNH**

**122 Customers Served**

	<i>Installed Measures</i>	<i>Heating Systems*</i>	<i>Total CORE</i>	<i>Collaborated Funds</i>	<i>Co-Pay</i>	<i>Total Funds</i>
<i>Total</i>	\$504,941	\$58,838	<b>\$563,779</b>	\$159,770	\$0	<b>\$723,549</b>
<i>Average</i>	\$4,139	\$4,903	<b>\$4,621</b>	\$1,310	\$0	<b>\$5,931</b>

**UNITIL**

**7 Customers Served**

	<i>Installed Measures</i>	<i>Heating Systems*</i>	<i>Total CORE</i>	<i>Collaborated Funds</i>	<i>Co-Pay</i>	<i>Total Funds</i>
<i>Total</i>	\$28,304	\$7,148	<b>\$35,452</b>	\$8,498	\$0	<b>\$43,950</b>
<i>Average</i>	\$4,043	\$3,574	<b>\$5,065</b>	\$1,214	\$0	<b>\$6,279</b>

**UNITIL-GAS**

**0 Customers Served**

	<i>Installed Measures</i>	<i>Heating Systems*</i>	<i>Total CORE</i>	<i>Collaborated Funds</i>	<i>Co-Pay</i>	<i>Total Funds</i>
<i>Total</i>	\$0	\$0	<b>\$0</b>	\$0	\$0	<b>\$0</b>
<i>Average</i>	\$0	\$0	<b>\$0</b>	\$0	\$0	<b>\$0</b>

*\* Heating System average costs based on number of heating systems installed*

Home Energy Assistance Q1-2014  
Measures Installed by County and Dwelling Type

County	DwellingType	Measure Type Category	Liberty Utilities	Liberty Utilities-GAS	NHEC	PSNH	UNITIL	UNITIL-GAS	Grand Total	
Belknap	Single family	Custom		1	1	3		5	5	
		Health and Safety			2	6		8	8	
		Heating and Cooling			7	17		24	24	
		Hot Water			1	7		8	8	
		Lighting			2	5		7	7	
Carroll	Single family	Custom				1		1	1	
		Health and Safety			4	12		16	16	
		Heating and Cooling			18	43		61	61	
		Hot Water			7	19		26	26	
		Lighting			6	20		26	26	
Cheshire	Single family	Appliances				4		4	4	
		Health and Safety				8		8	8	
		Heating and Cooling				19		19	19	
		Hot Water				9		9	9	
		Lighting				8		8	8	
Coos	Single family	Appliances				9		9	9	
		Custom				2		2	2	
		Health and Safety				18		18	18	
		Heating and Cooling				66		66	66	
		Hot Water				23		23	23	
		Lighting				33		33	33	
Grafton	Single family	Health and Safety			1	3		4	4	
		Heating and Cooling			4	9		13	13	
		Hot Water			3	6		9	9	
		Lighting			2	5		7	7	
Hillsborough	Multi-family	Appliances				3		3	3	
		Health and Safety				6		6	6	
		Heating and Cooling				13		13	13	
		Hot Water				2		2	2	
		Lighting				4		4	4	
		LED Lighting				2		2	2	
	Single family	Appliances	1				13		14	14
		Custom		4					4	4
		Health and Safety	2	10		27		39	39	
		Heating and Cooling	7	31		92		130	130	
		Hot Water	2	5		12		19	19	
Lighting	2			24		26	26			
LED Lighting				5		5	5			

Home Energy Assistance Q1-2014  
Measures Installed by County and Dwelling Type

County	DwellingType	Measure Type Category	Liberty Utilities	Liberty Utilities-GAS	NHEC	PSNH	UNITIL	UNITIL-GAS	Grand Total	
Merrimack	Multi-family	Appliances					1	1	1	
		Custom					1	1	1	
		Health and Safety					1	1	1	
		Heating and Cooling		302			4	306	306	
		Hot Water					1	1	1	
		Lighting					1	1	1	
	Single family	Appliances		1					1	1
		Custom			2		5		7	7
		Health and Safety			2		6	1	9	9
		Heating and Cooling			11		21	4	36	36
		Hot Water			1		7	1	9	9
		Lighting			1		7	2	10	10
	Rockingham	Multi-family	Appliances					22	22	22
Heating and Cooling							48	48	48	
Hot Water							25	25	25	
LED Lighting							23	23	23	
Single family		Appliances	1		2		3	4	10	10
		Custom			2				2	2
		Health and Safety	1		3		6	4	14	14
		Heating and Cooling	5		10		24	18	57	57
		Hot Water	1		1		4	4	10	10
		Lighting	1		3		6	5	15	15
Strafford	Single family	Custom					1	1	1	
		Health and Safety					1	1	1	
		Heating and Cooling					3	3	3	
		Hot Water					2	2	2	
		Lighting					1	1	1	
Sullivan	Single family	Appliances	2					2	2	
		Custom	1					1	1	
		Health and Safety	2					2	2	
		Heating and Cooling	5					5	5	
		Hot Water	2					2	2	
		Lighting	2					2	2	



Program Details by County						
Liberty Utilities Gas Low Income Weatherization	Budget/ Goal	1/01/13 through 3/31/14				Percent of Actual to Goal
		Actual	In Process	Prospective	Total	
<b>Program Expenses (\$)</b>	<b>\$923,250</b>	\$243,276	\$0	\$0	\$243,276	<b>26.3%</b>
<b>Program Participation</b>	<b>182</b>	<b>177</b>	<b>0</b>	<b>0</b>	<b>177</b>	<b>97.3%</b>
Hillsborough County		17	0	0		
Merrimack County		159	0	0		
Belknap County		1	0	0		
<b>Program Savings (annual mmbtu)</b>	<b>5,812</b>	<b>2,297</b>	<b>0</b>	<b>0</b>	<b>2,297</b>	<b>39.5%</b>
Hillsborough County		540	0	0		
Merrimack County		1,737	0	0		
Belknap County		20	0	0		
<b>Program Savings (Lifetime mmbtu)</b>	<b>116,239</b>	<b>50,009</b>	<b>0</b>	<b>0</b>	<b>50,009</b>	<b>43.0%</b>
Hillsborough County		10,644	0	0		
Merrimack County		38,976	0	0		
Belknap County		390	0	0		

<u>Average Expenditure per Project</u>	<u># of Projects</u>	<u>Project Cost/# of projects</u>
Single Family	36	\$2,845
Multi-Family	141	\$999

Detailed Program Budget							
<u>Liberty Utilities Gas</u>	Internal Admin	External Admin	Rebates/ Services	Int Implem Svcs	Marketing	Evaluation	Total
<b>Budget (Jan 1, 2014- Dec 31, 2014)</b>	<b>\$ 63,000</b>	<b>\$ 96,154</b>	<b>\$ 653,846</b>	<b>\$ 70,875</b>	<b>\$ -</b>	<b>\$ 39,375</b>	<b>\$ 923,250</b>
Actual Expenditures	\$ 2,647	\$ -	\$ 228,309	\$ 12,237	\$ 27	\$ 56	\$ 243,276
Actual as a % of total expenditures	1%	0%	94%	5%	0%	0%	100%
Actual as a % of Budget	4%	0%	35%	0%	0%	0%	26%

Program Details by County						
Unitil Gas Low Income Weatherization	Budget/ Goal	1/01/13 through 3/31/14				Percent of Actual to Goal
		Actual	In Process	Prospective	Total	
<b>Program Expenses (\$)</b>	<b>\$232,069</b>	\$11,112	\$0	\$0	\$11,112	<b>4.8%</b>
<b>Program Participation</b>	<b>43</b>	<b>0</b>	<b>0</b>	<b>0</b>	<b>0</b>	<b>0.0%</b>
Strafford County		0	0	0		
Rockingham County		0	0	0		
<b>Program Savings (annual mmbtu)</b>	<b>1,829</b>	<b>0</b>	<b>0</b>	<b>0</b>	<b>0</b>	<b>0.0%</b>
Strafford County		0	0	0		
Rockingham County		0	0	0		
<b>Program Savings (Lifetime mmbtu)</b>	<b>37,039</b>	<b>0</b>	<b>0</b>	<b>0</b>	<b>0</b>	<b>0.0%</b>
Strafford County		0	0	0		
Rockingham County		0	0	0		

<u>Average Expenditure per Project</u>	<u># of Projects</u>	<u>Project Cost/# of projects</u>
Single Family	-	\$0
Multi-Family	-	\$0

Notes:

Detailed Program Budget							
Unitil	Internal Admin	External Admin	Rebates/ Services	Int Implem Svcs	Marketing	Evaluation	Total
<b>Budget (Jan 1, 2014- Dec 31, 2014)</b>	<b>\$ 14,078</b>	<b>\$ 1,816</b>	<b>\$ 146,940</b>	<b>\$ 55,311</b>	<b>\$ 2,321</b>	<b>\$ 11,603</b>	<b>\$ 232,069</b>
Actual Expenditures	\$ 2,849	\$ 1,082	\$ -	\$ 6,893	\$ -	\$ 288	\$ 11,112
Actual as a % of total expenditures	26%	10%	0%	62%	0%	3%	100%
Actual as a % of Budget	20%	60%	0%	12%	0%	2%	5%

**NH CORE Energy Efficiency FCM Budget & Expenses**  
(January 1 - March 31, 2014)

Category	Liberty	NHEC	PSNH	UES	Total
<b>FCM Payments estimated for 2014</b>	\$128,600	\$60,000	\$2,235,000	\$174,200	\$2,597,800
<b>FCM Payments from ISO-NE</b>					
Q1 2014	\$27,291	\$24,853	\$549,374	\$74,073	\$675,591
Q2 2014	\$0	\$0	\$0	\$0	\$0
Q3 2014	\$0	\$0	\$0	\$0	\$0
Q4 2014	\$0	\$0	\$0	\$0	\$0
<b>TOTAL Payments</b>	<b>\$27,291</b>	<b>\$24,853</b>	<b>\$549,374</b>	<b>\$74,073</b>	<b>\$675,591</b>
<b>FCM Expenses</b>					
Financial Assurance					
Q1 2014	\$0	\$0	\$0	\$0	\$0
Q2 2014	\$0	\$0	\$0	\$0	\$0
Q3 2014	\$0	\$0	\$0	\$0	\$0
Q4 2014	\$0	\$0	\$0	\$0	\$0
Other (Admin, Reporting, M&V, etc.)					
Q1 2014	\$2,604	\$765	\$21,715	\$2,670	\$27,754
Q2 2014	\$0	\$0	\$0	\$0	\$0
Q3 2014	\$0	\$0	\$0	\$0	\$0
Q4 2014	\$0	\$0	\$0	\$0	\$0
<b>TOTAL Expenses</b>	<b>\$2,604</b>	<b>\$765</b>	<b>\$21,715</b>	<b>\$2,670</b>	<b>\$27,754</b>
<b>Payments - Expenses =</b>	<b>\$24,688</b>	<b>\$24,088</b>	<b>\$527,659</b>	<b>\$71,403</b>	<b>\$647,837</b>

Note:

Category	Electric Companies					Natural Gas Companies			Grand Total
	Liberty	NHEC	PSNH	UES	Total	Liberty	Unitil	Total	
2014 M&E Budgets Approved by the Commission (1)	\$108,599	\$98,185	\$945,199	\$130,364	\$1,282,347	\$250,084	\$66,799	\$316,883	\$1,599,230
Actual Quarterly Reporting									
Q1 2014	\$130	\$1,220	\$28,046	\$5,483	\$34,879	\$404	\$2,433	\$2,837	\$37,716
Q2 2014	\$0	\$0	\$0	\$0	\$0	\$0	\$0	\$0	\$0
Q3 2014	\$0	\$0	\$0	\$0	\$0	\$0	\$0	\$0	\$0
Q4 2014	<u>\$0</u>	<u>\$0</u>	<u>\$0</u>	<u>\$0</u>	<u>\$0</u>	<u>\$0</u>	<u>\$0</u>	<u>\$0</u>	<u>\$0</u>
	<b>\$130</b>	<b>\$1,220</b>	<b>\$28,046</b>	<b>\$5,483</b>	<b>\$34,879</b>	<b>\$404</b>	<b>\$2,433</b>	<b>\$2,837</b>	<b>\$37,716</b>

<b>Status Of M&amp;E Studies:</b>	Est. Cost	Vendor	Status
Weatherization "Ancillary Services" Evaluation	\$ 49,140	Cadmus	Complete (Q2 2013)
NE Avoided Energy Supply Cost Study (2013)	\$ 40,873	Synapse	Complete (7/12/2013)
Liberty Wifi Thermostat Pilot Program Evaluation	\$ 36,815	Cadmus	Complete (7/22/2013)
C&I New Equip. & Construction Baseline Update	\$ 129,920	ERS	Complete (3/4/2014)
Treat/Otter Auditing/Tracking Software	\$ 150,000	PSD	Monthly
NEEP/CEE Regional/National M&E	\$ 157,065	NEEP	Ongoing
Multi-Year M&E Planning Study	\$ 123,121	Est. Cost	Going before Governor & Council for approval on 6-4-2014.
HEA Impact Evaluation	tbd		
Energy Star Homes - Impact Evaluation	tbd		
Large Business (Ret/New/RFP) Program - Impact Evaluation	\$ 550,000	DNV Kema	ECD: Preliminary Finding for 2015-2016 Plan (Q2, 2014), Final (Q4, 2014)
Energy Star Appliance Program - Impact Evaluation	tbd		
Other Natural Gas Studies	tbd	Est. Cost	TBD
<b>Total</b>	<u><u>\$ 1,236,934</u></u>		

## RE-CORE RGGI Funded Revolving Loan Fund (RLF)

<b>RLF Terms</b>				
	<b>Liberty</b>	<b>NHEC</b>	<b>PSNH</b>	<b>Unitil</b>
<b>Customer Segment</b>	<b>(Max Loan)</b>	<b>(Max Loan)</b>	<b>(Max Loan)</b>	<b>(Max Loan)</b>
	<b>(Max Term)</b>	<b>(Max Term)</b>	<b>(Max Term)</b>	<b>(Max Term)</b>
Residential	\$500	\$7,500	\$7,500	\$7,500
	2 years	7 years	7 years	7 years
Municipal	\$50,000			\$50,000
	2 years	Smart Start	Smart Start	10 years
<b>RLF Information (From inception Through March 31, 2014)</b>				
<b>RGGI Funds for Revolving Loan Fund</b>	<b>Liberty</b>	<b>NHEC</b>	<b>PSNH</b>	<b>Unitil</b>
<b>Total \$ of Revolving Loan Fund</b>	<b>\$303,000</b>	<b>\$300,000</b>	<b>\$690,000</b>	<b>\$792,716</b>
Less Loans paid out	\$139,054	\$389,928	\$970,500	\$768,560
Plus \$ repaid	<u>\$47,507</u>	<u>\$165,860</u>	<u>\$455,417</u>	<u>\$249,359</u>
Current Balance	\$211,452	\$75,932	\$174,917	\$273,515
Less \$ In Process	\$0	\$43,238	\$48,353	\$70,583
Less Potential	<u>\$0</u>	<u>\$18,427</u>	<u>\$0</u>	<u>\$160,662</u>
Amount Available to Loan out	<b>\$211,452</b>	<b>\$14,267</b>	<b>\$126,564</b>	<b>\$42,271</b>
<b>Project Financing Information (2013 Results)</b>				
<u>Residential Projects</u>				
Total Number of Projects Financed	0	8	30	2
2014 Average Loan Made		\$3,049	\$3,813	\$3,596
<u>Municipal &amp; C&amp;I Projects</u>				
Total Number of Projects Financed	0	0	0	0
2014 Average Loan Made	na	na	na	na