

***Home Energy Assistance
CORE/DOE Combined
Funding Effort***

Completions as of Saturday, December 31, 2005

<i>CompanyName</i>	<i>Combined</i>	<i>CORE only</i>	<i>Total</i>	<i>% Collaboration</i>
Statewide	664	533	1197	55%
Granite State Electric	19	20	39	49%
NHEC	59	17	76	78%
PSNH	480	374	854	56%
UNITIL	106	122	228	46%

Note: Unitil completed an additional 29 multi-family units that were not reported in Otter and not included in the above numbers.

Home Energy Assistance County Summary

Completions as of Saturday December 31, 2005

<i>County</i>	<i>Jobs</i>
BELKNAP	35
CARROLL	73
CHESHIRE	209
COOS	73
GRAFTON	89
HILLSBOROUGH	145
MERRIMACK	291
ROCKINGHAM	160
STRAFFORD	70
SULLIVAN	52

Note: Unitil completed an additional 29 multi-family units that were not reported in Otter and not included in the above numbers.

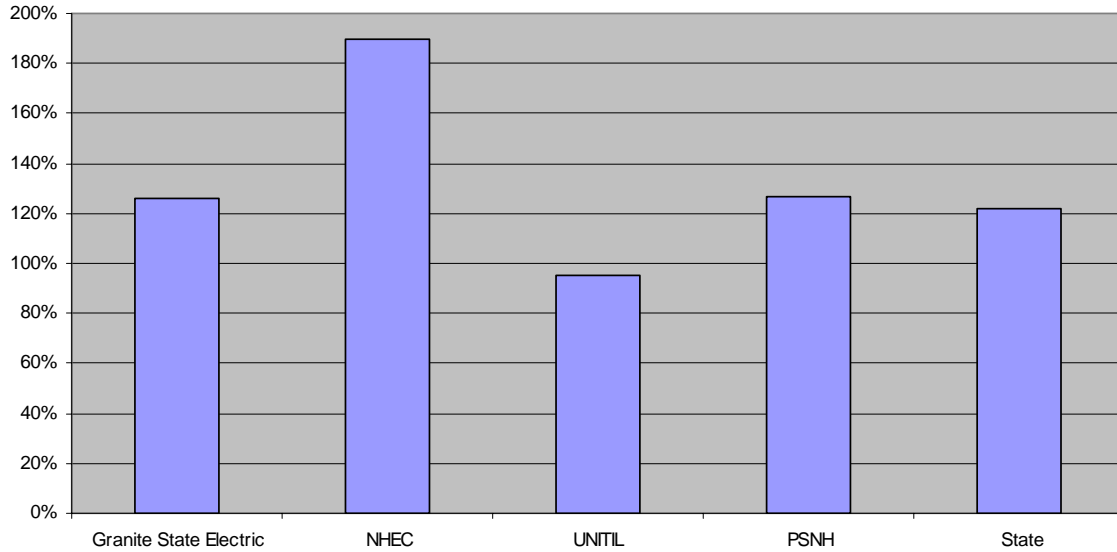
Home Energy Assistance Dwelling Mix

Completions as of Saturday, December 31, 2005

<i>Company</i>	<i>Dwelling Type</i>	<i>Jobs</i>
Statewide	Single family	389
	Multi-family	808
	State Total	1197
Granite State Electric	Single family	39
	Granite State Electric Total	39
	NHEC	
NHEC	Single family	38
	Multi-family	38
	NHEC Total	76
PSNH	Single family	298
	Multi-family	556
	PSNH Total	854
UNITIL	Single family	14
	Multi-family	214
	UNITIL Total	228

Note: Unitil completed an additional 29 multi-family units that were not reported in Otter and not included in the above numbers.

***Home Energy Assistance
Completions
% of 4th Qtr Goal
As of December 31, 2005***



CompanyName	To Date	Qtr 4	% of Goal
	Completions	Goal	
Granite State Electric	39	31	126%
NHEC	76	40	190%
UNITIL	228	240	95%
PSNH	854	673	127%
State	1197	984	122%

Note: Unitil completed an additional 29 multi-family units that were not reported in Otter and not included in the above numbers.

NHSaves HEA Financial Summary

Saturday, December 31, 2005

	<i>Rebates</i>	<i>+ Admin Fees</i>	<i>= Total CORE</i>	<i>+ WAP</i>	<i>+ Non-WAP funds</i>	<i>+ Co-Pay</i>	<i>= Total</i>
Granite State Electric							
			Customers Served 39				
<i>Total</i>	\$64,212	\$12,330	\$76,542	\$10,193	\$2,766	\$479	\$89,980
<i>Average</i>	\$1,646	\$316	\$1,963	\$261	\$71	\$12	\$2,307
NHEC							
			Customers Served 76				
<i>Total</i>	\$63,573	\$14,504	\$78,077	\$49,257	\$12,969	\$1,894	\$142,197
<i>Average</i>	\$836	\$191	\$1,027	\$648	\$171	\$25	\$1,871
PSNH							
			Customers Served 854				
<i>Total</i>	\$1,196,540	\$169,974	\$1,366,513	\$556,392	\$13,491	\$1,837	\$1,938,234
<i>Average</i>	\$1,401	\$199	\$1,600	\$652	\$16	\$2	\$2,270
UNITIL							
			Customers Served 228				
<i>Total</i>	\$253,820	\$29,731	\$283,551	\$95	\$166,467	\$1,636	\$451,748
<i>Average</i>	\$1,113	\$130	\$1,244	\$0	\$730	\$7	\$1,981

Note: Unitil completed an additional 29 multi-family units that were not reported in Otter and not included in the above numbers.