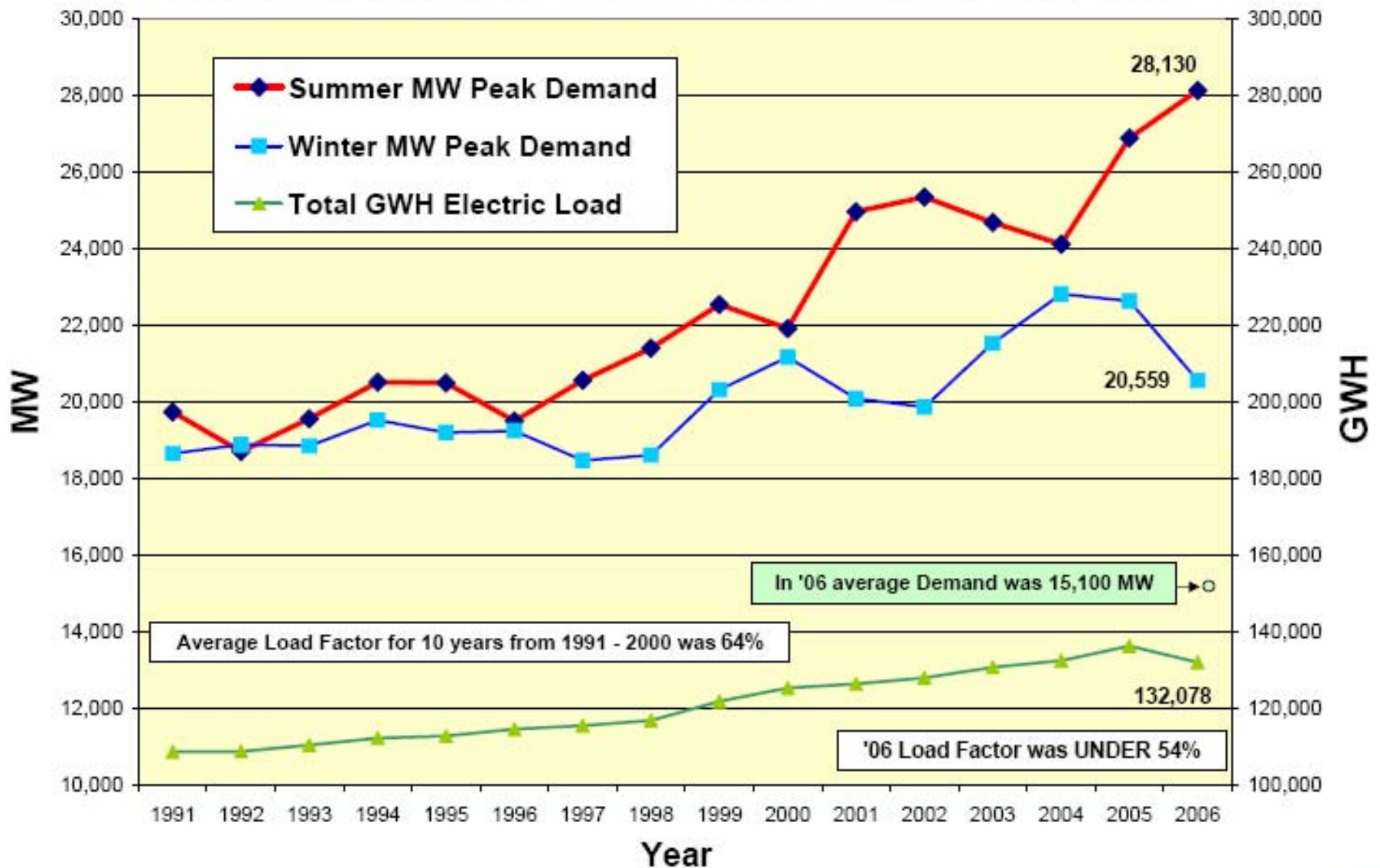
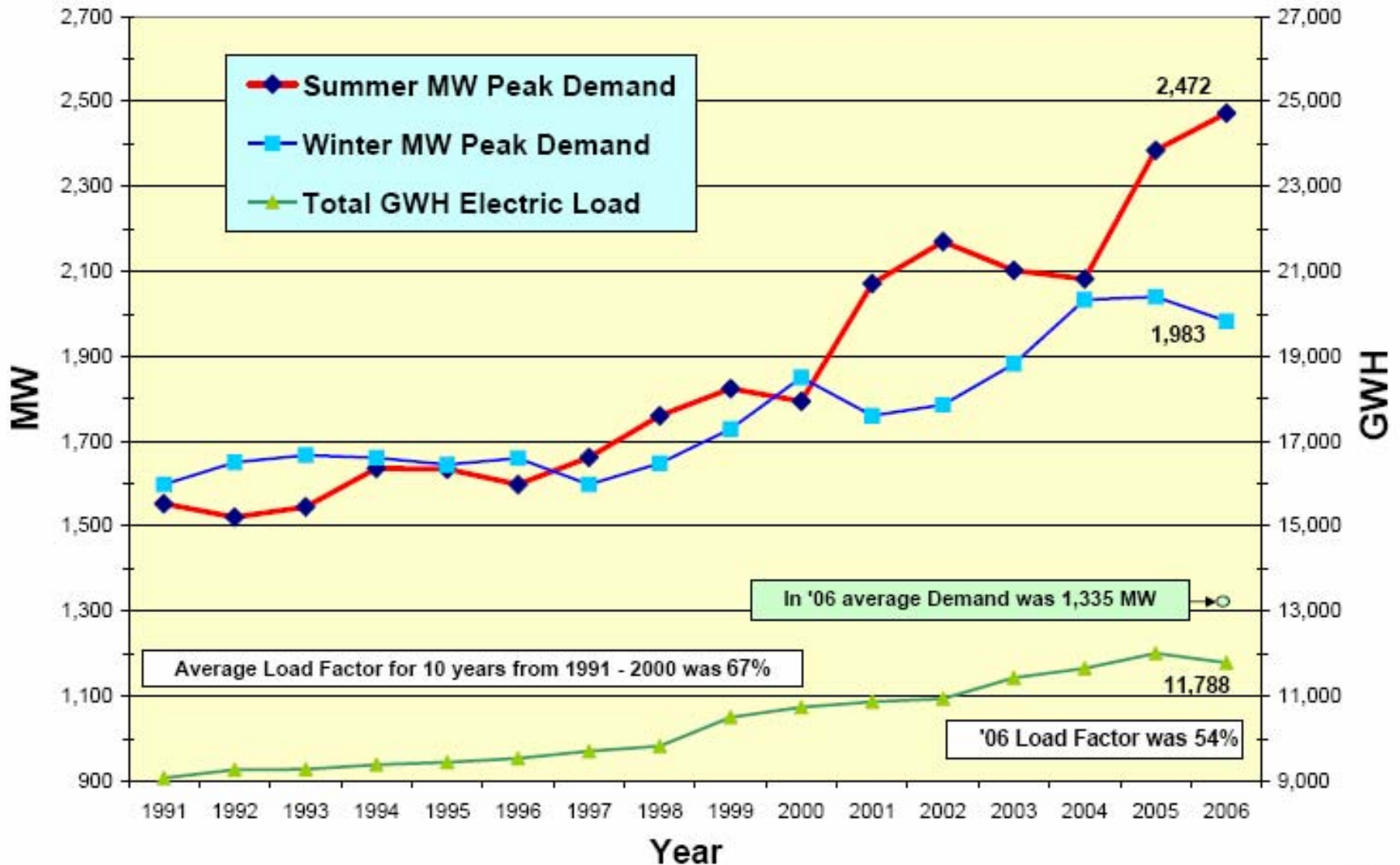


ISO-New England Load & Peak Demand, 1991-2006



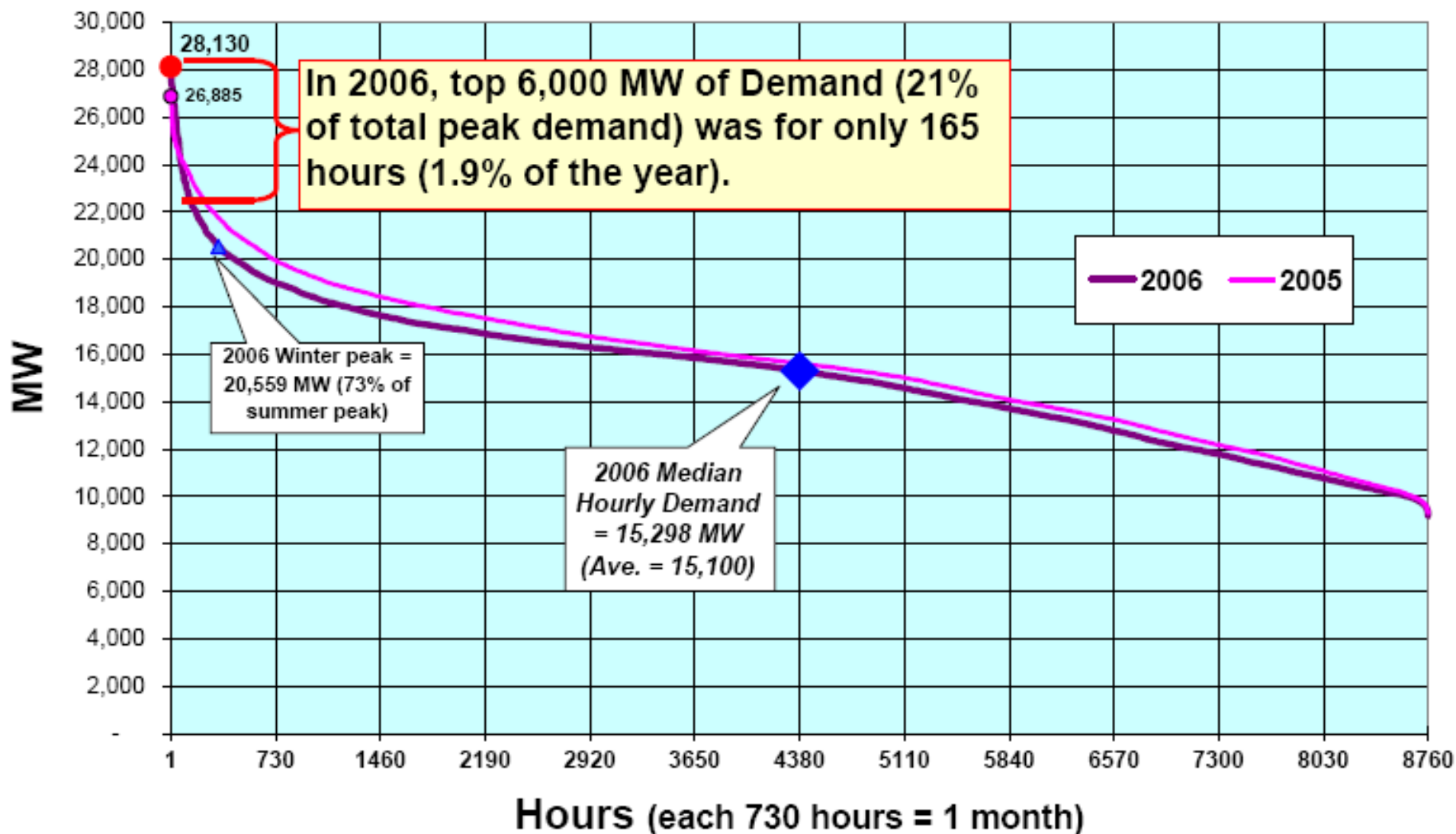
Graph by Clifton Below, NHPUC, 3/20/07, from: http://www.iso-ne.com/trans/celt/fscd_detail/2006/isone_2006_forecast_data.xls & [2006_smd_hourly.xls](http://www.iso-ne.com/trans/celt/fscd_detail/2006/smd_hourly.xls)

New Hampshire Load & Peak Demand, 1991-2006



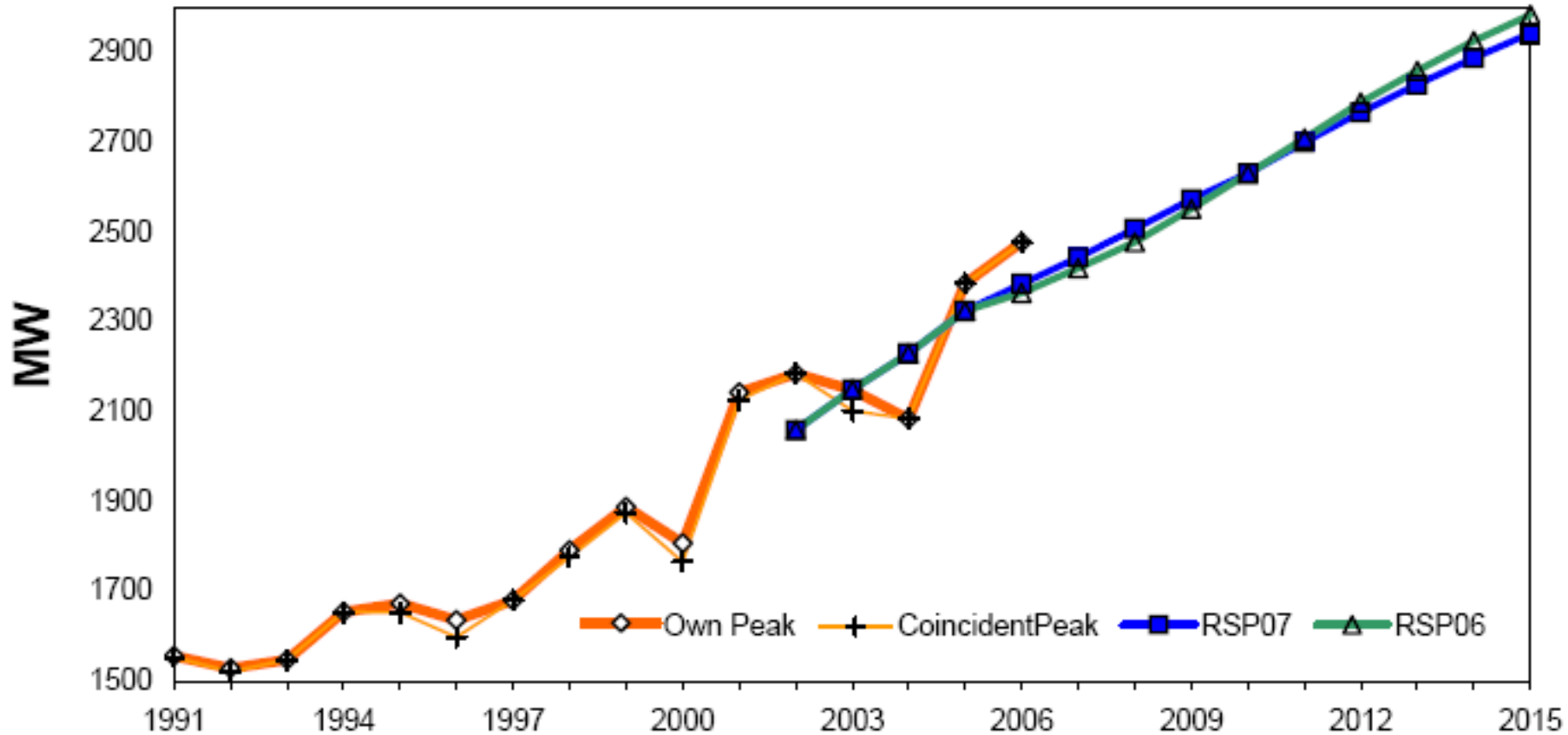
Graph by Clifton Below, NHPUC, 8/28/07, from: http://www.iso-ne.com/trans/celt/fsct_detail/2007/isone_2007_forecast_data.xls & 2006_smd_hourly.xls

ISO-New England 2005 & 2006 Hourly MW Load Duration Curve



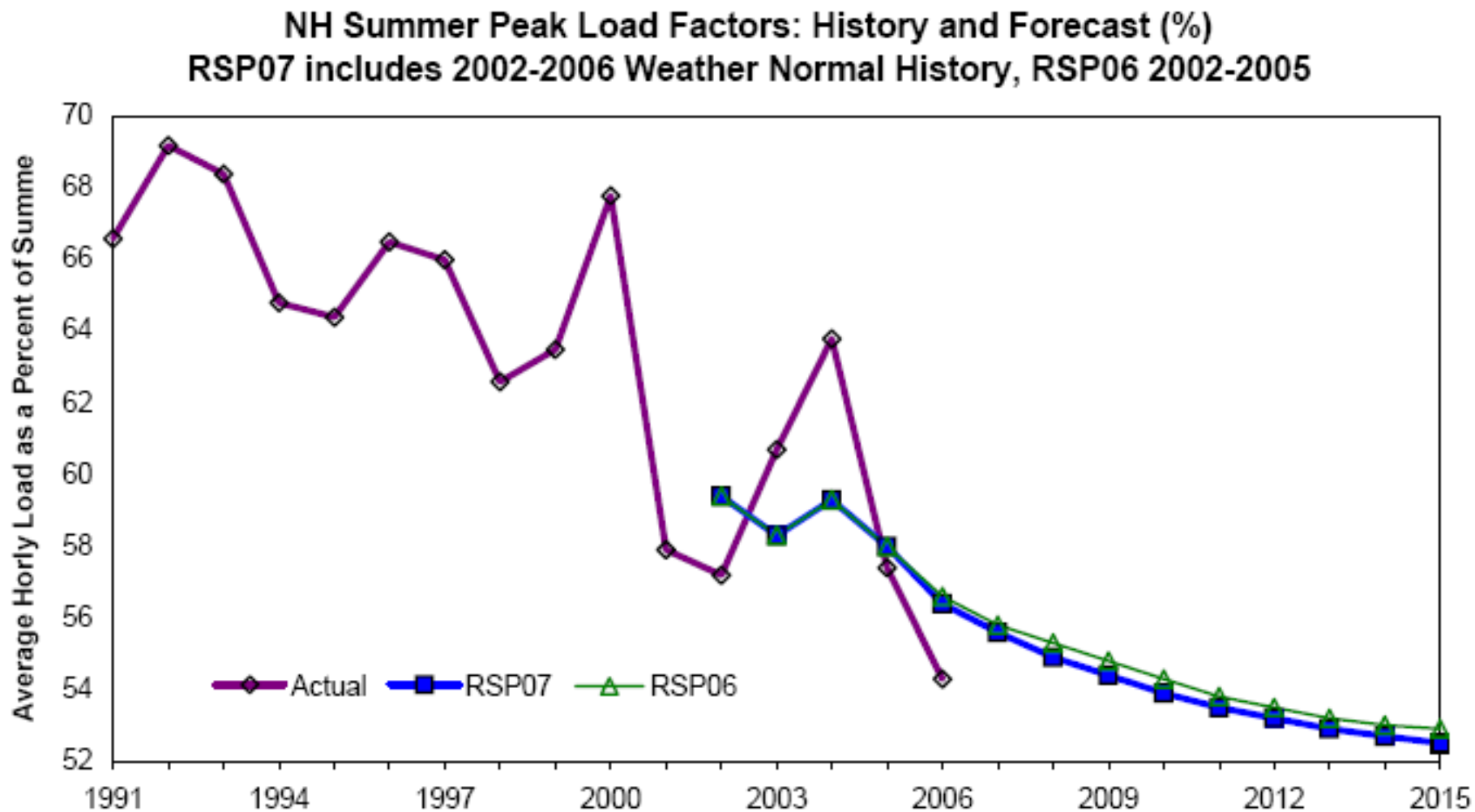
NH Summer Peak Loads are expected to continue to grow:

NH Summer Peak Loads: History and Forecast (MW)
RSP07 includes 2002-2006 Weather Normal History, RSP06 2002-2005



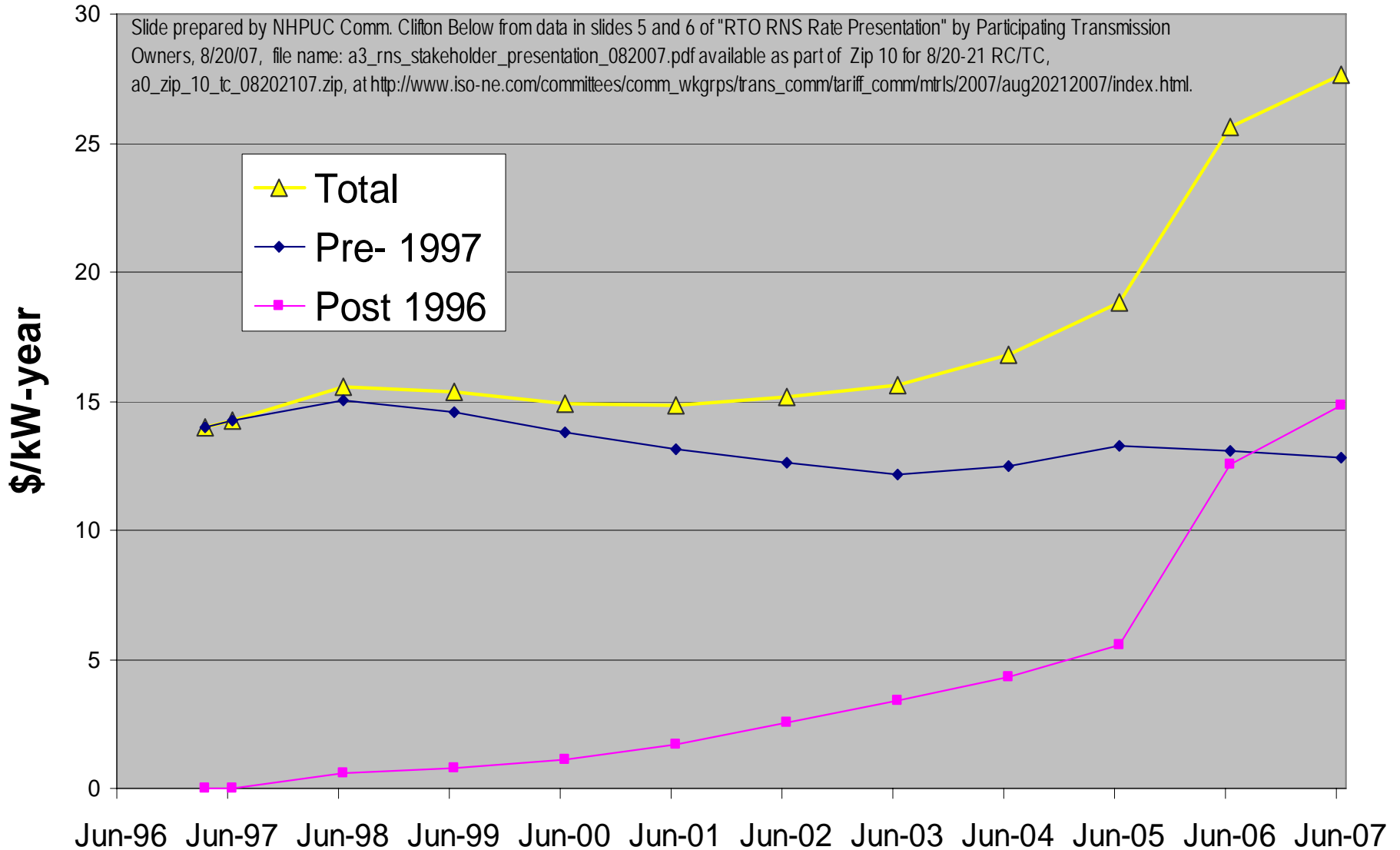
Source: http://www.iso-ne.com/committees/comm_wkgrps/prtcpnts_comm/pac/mtrls/2007/apr52007/revised_%20pac18_preliminary_rsp_load_forecast.xls

While NH's summer (& annual) load factor continues to decline:



Source: http://www.iso-ne.com/committees/comm_wkgrps/prtcpnts_comm/pac/mtrls/2007/apr52007/revised_%20pac18_preliminary_rsp_load_forecast.xls

New England Transmission Regional Network Service (RNS) Rates History



***Action Items from the 6/26/07 meeting of the
Conference of New England Governors
and Eastern Canadian Premiers, include:***

- **5)** The Governors and Premiers direct the Northeast International Committee on Energy (NICE), in collaboration with representatives from the system operators and market participants (where appropriate), to: ...
- **5e)** Explore actions to ease integration of intermittent resources (like tidal and wind power) across the region to expand the
 - Work with the New Brunswick ISO, Nova Scotia Power Inc., Hydro Québec, Newfoundland & Labrador Hydro, the ISO-New England, Inc. and other pertinent organizations to evaluate how the ‘balancing’ of intermittent resources may be enhanced and supported.