

***Home Energy Assistance  
CORE/DOE Combined  
Funding Effort***

*Completions as of Thursday June 30, 2005*

<b><i>CompanyName</i></b>	<b><i>Combined</i></b>	<b><i>CORE only</i></b>	<b><i>Total</i></b>	<b><i>% Collaboration</i></b>
Statewide	456	106	562	81%
Granite State Electric	8	9	17	47%
NHEC	41	8	49	84%
PSNH	287	84	371	77%
UNITIL (See Note)	120	5	125	96%

---

Note: Unitil's data reflects a large project funded by HUD, Concord Housing (City of Concord), WAP, and Unitil. All project information was determined by the performance contractor, Ameresco, which performed the engineering audits. The data provided herein was reported by the Company, but not reported via the TREAT/OTTER software.

# *Home Energy Assistance County Summary*

*Completions as of Thursday June 30, 2005*

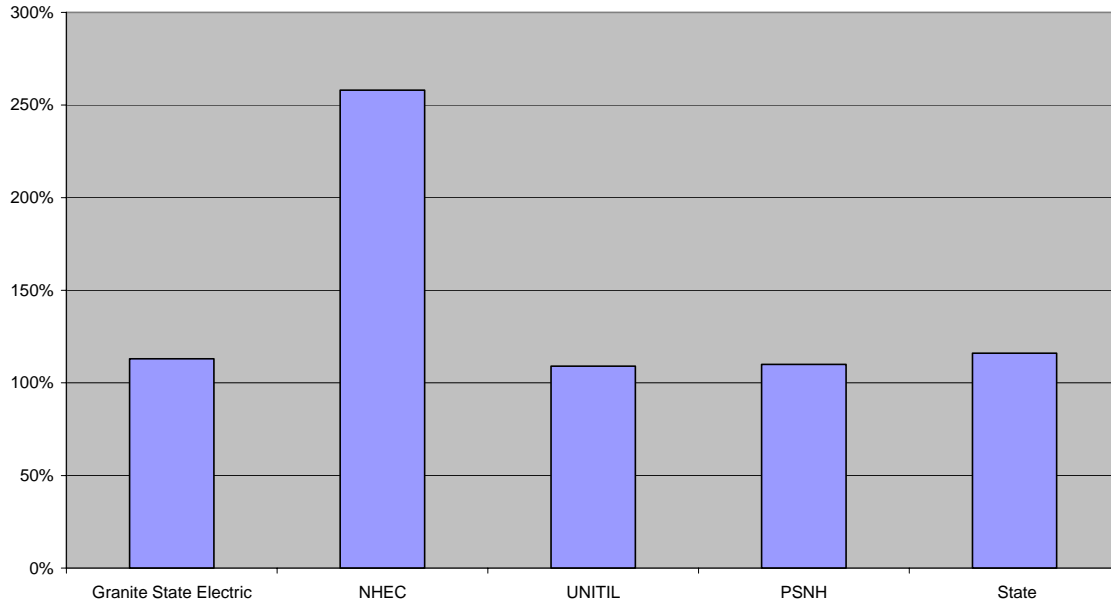
<i>County</i>	<i>Jobs</i>
Belknap	30
Carroll	46
Cheshire	6
Coos	28
Grafton	59
Hillsborough	72
Merrimack	213
Rockingham	84
Strafford	0
Sullivan	24

# *Home Energy Assistance Dwelling Mix*

*Completions as of Thursday, June 30, 2005*

<i>Company</i>	<i>Dwelling TypeJobs</i>	
Statewide	Single family	174
	Multi-family	388
	<b>State Total</b>	<b>562</b>
Granite State Electric	Single family	17
	<b>Granite State Electric Total</b>	<b>17</b>
	NHEC	
NHEC	Single family	11
	Multi-family	38
	<b>NHEC Total</b>	<b>49</b>
PSNH	Single family	141
	Multi-family	230
	<b>PSNH Total</b>	<b>371</b>
UNITIL	Single family	5
	Multi-family	120
	<b>UNITIL Total</b>	<b>125</b>

**Home Energy Assistance Completions**  
**% of 2nd Qtr Goal**  
 As of June 30, 2005



CompanyName	To Date	Qtr 2	% of Goal
	Completions	Goal	
Granite State Electric	17	15	113%
NHEC	49	19	258%
UNITIL	125	115	109%
PSNH	371	337	110%
State	562	486	116%

# *NHSaves HEA Financial Summary*

*Thursday June 30, 2005*

	<i>Rebates</i>	<i>+ Admin Fees =</i>	<i>Total CORE</i>	<i>+ WAP</i>	<i>+ Non-WAP funds+</i>	<i>Co-Pay</i>	<i>= Total Funds</i>
<b>Granite State Electric</b>							
			<b>Customers Served 17</b>				
<i>Total</i>	\$26,792	\$4,902	<b>\$31,694</b>	\$3,313	\$0	\$0	<b>\$35,007</b>
<i>Average</i>	\$1,576	\$288	<b>\$1,864</b>	\$195	\$0	\$0	<b>\$2,059</b>
<b>NHEC</b>							
			<b>Customers Served 49</b>				
<i>Total</i>	\$22,459	\$6,223	<b>\$28,682</b>	\$28,053	\$6,973	\$0	<b>\$63,708</b>
<i>Average</i>	\$458	\$127	<b>\$585</b>	\$573	\$142	\$0	<b>\$1,300</b>
<b>PSNH</b>							
			<b>Customers Served 371</b>				
<i>Total</i>	\$529,621	\$77,818	<b>\$607,439</b>	\$334,472	\$10,889	\$1,566	<b>\$954,366</b>
<i>Average</i>	\$1,428	\$210	<b>\$1,637</b>	\$902	\$29	\$4	<b>\$2,572</b>
<b>UNITIL</b>							
			<b>Customers Served 125</b>				
<i>Total</i>	\$79,680	\$11,980	<b>\$91,660</b>	\$21,483	\$608,224 (See Note)	\$0	<b>\$721,367</b>
<i>Average</i>	\$637	\$96	<b>\$733</b>	\$172	\$0 (tbd)	\$0	<b>\$0 (tbd)</b>

Note: Total funding for Unitil's Concord Housing project includes WAP and Non-WAP funding. CAA to provide breakout of WAP funding at project completion.