

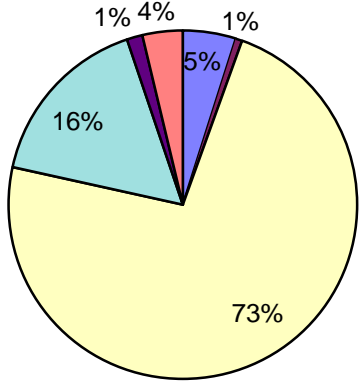
Jan-Dec 2013

NH CORE Energy Efficiency Program - 2013 Electric Expenditures

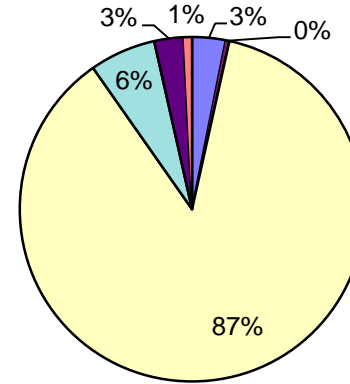
	(see Note 1)						
	<u>Internal Adm</u>	<u>External Adm</u>	<u>Cust Rebts/Services</u>	<u>Internal Impl.</u>	<u>Marketing</u>	<u>Evaluation</u>	<u>Total</u>
ENERGY STAR Homes	\$ 48,560	\$ 2,603	\$ 894,095	\$ 170,592	\$ 13,284	\$ 15,457	\$ 1,144,591
Liberty Utilities	7,947	-	79,321	6,781	1,361	2,333	97,743
NHEC	3,517	2,441	34,465	30,634	375	732	72,165
PSNH	30,919	-	766,526	102,493	10,821	8,843	919,602
Unitil	6,177	162	13,783	30,683	728	3,549	55,080
Home Performance w/Energy Star	\$ 108,796	\$ 13,592	\$ 1,615,688	\$ 362,311	\$ 31,997	\$ 82,785	\$ 2,215,168
Liberty Utilities	20,042	-	43,013	8,748	12,047	5,046	88,896
NHEC	11,550	12,031	138,784	48,102	1,921	7,318	219,705
PSNH	66,735	89	1,316,372	249,469	14,423	63,998	1,711,086
Unitil	10,469	1,472	117,518	55,992	3,607	6,424	195,481
Energy Star Appliances	\$ 95,223	\$ 10,186	\$ 2,635,561	\$ 188,433	\$ 83,530	\$ 23,612	\$ 3,036,545
Liberty Utilities	11,093	-	111,599	6,084	5,092	7,295	141,163
NHEC	7,745	5,375	346,685	34,529	2,857	1,613	398,804
PSNH	69,827	-	2,006,377	75,151	39,421	10,578	2,201,354
Unitil	6,558	4,811	170,899	72,668	36,160	4,127	295,224
Home Energy Assistance	\$ 141,557	\$ 17,526	\$ 3,837,346	\$ 209,375	\$ 7,568	\$ 57,970	\$ 4,271,341
Liberty Utilities	12,609	-	249,784	15,467	3,713	12,129	293,702
NHEC	20,110	15,183	284,933	36,136	2,252	6,716	365,331
PSNH	97,133	-	3,019,615	84,191	1,603	32,019	3,234,561
Unitil	11,705	2,343	283,013	73,580	-	7,106	377,747
ENERGY STAR Lighting	\$ 51,961	\$ 7,938	\$ 980,444	\$ 176,086	\$ 170,972	\$ 12,524	\$ 1,399,926
Liberty Utilities	8,766	-	46,632	4,912	26,161	3,513	89,984
NHEC	6,697	4,647	84,486	21,925	6,050	1,394	125,199
PSNH	30,920	-	756,559	89,193	127,209	4,901	1,008,782
Unitil	5,578	3,291	92,767	60,056	11,552	2,716	175,961
Other Residential Programs	\$ 27,332	\$ 2,473	\$ 306,193	\$ 146,514	\$ 572	\$ 4,007	\$ 487,091
Liberty Utilities	-	-	-	-	-	-	-
NHEC	678	470	7,850	4,214	72	141	13,425
PSNH	26,654	-	298,343	124,274	500	3,866	453,637
Unitil (Home Energy Suite)	-	2,003	-	18,026	-	-	20,029
Total Residential Programs	\$ 473,430	\$ 54,317	\$ 10,269,326	\$ 1,253,310	\$ 307,924	\$ 196,355	\$ 12,554,661
Large Business Energy Solutions	\$ 272,489	\$ 13,444	\$ 4,305,916	\$ 1,006,646	\$ 48,041	\$ 131,115	\$ 5,777,652
Liberty Utilities	52,551	-	291,682	57,197	15,599	21,145	438,174
NHEC	10,866	7,541	151,976	28,327	1,707	2,262	202,679
PSNH	184,637	-	3,346,709	753,524	30,735	88,588	4,404,194
Unitil	24,434	5,904	515,548	167,598	-	19,120	732,604
Small Business Energy Solutions	\$ 197,572	\$ 13,783	\$ 3,480,139	\$ 677,048	\$ 44,565	\$ 60,270	\$ 4,473,378
Liberty Utilities	42,590	-	162,902	35,201	13,705	16,482	270,879
NHEC	18,784	13,035	226,782	105,642	2,951	3,911	371,106
PSNH	123,034	58	2,758,994	480,721	24,022	28,854	3,415,683
Unitil	13,164	690	331,462	55,484	3,888	11,023	415,710
Other C&I Programs	\$ 20,790	\$ 1,085	\$ 549,087	\$ 76,807	\$ 12,493	\$ 3,721	\$ 663,982
Liberty Utilities	-	-	1,617	3,227	785	2,683	8,311
NHEC	1,143	793	13,176	7,420	180	238	22,949
PSNH (Education, RFP, Smart Start)	19,647	-	534,294	63,538	11,529	800	629,808
Unitil (Education, C&I Energy Suite)	-	292	-	2,622	-	-	2,914
Total Non-Residential Programs	\$ 490,850	\$ 28,312	\$ 8,335,142	\$ 1,760,501	\$ 105,100	\$ 195,106	\$ 10,915,012
TOTAL (Both Sectors)	\$964,280	\$82,629	\$18,604,468	\$3,013,811	\$413,024	\$391,461	\$23,469,673

Note 1: Evaluation amounts are based on 5% of total budgets. Actual program expenses will vary from numbers shown.

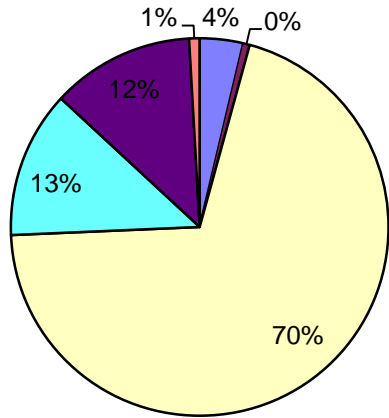
Home Performance w/Energy Star



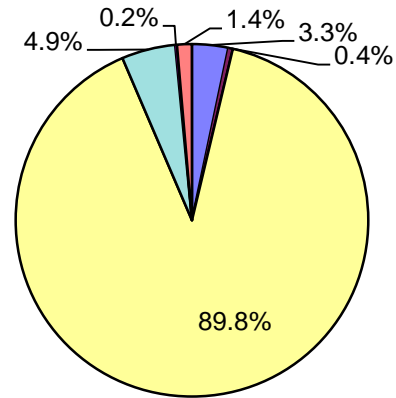
Energy Star Appliances



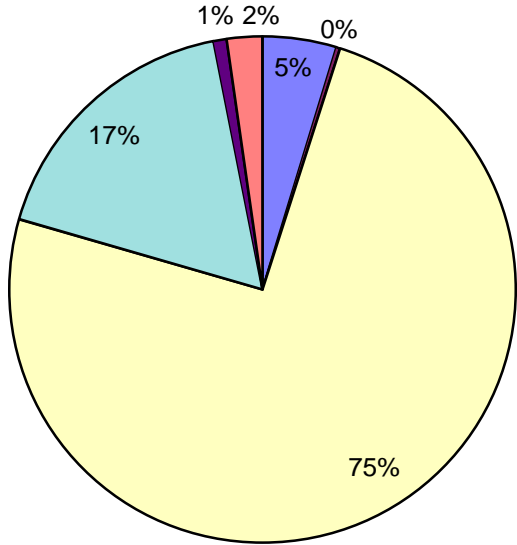
Energy Star Lighting



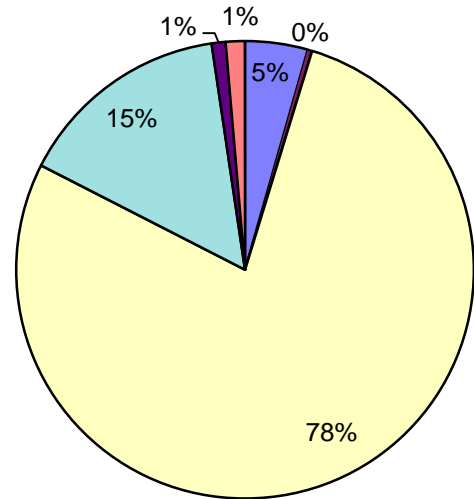
Home Energy Assistance



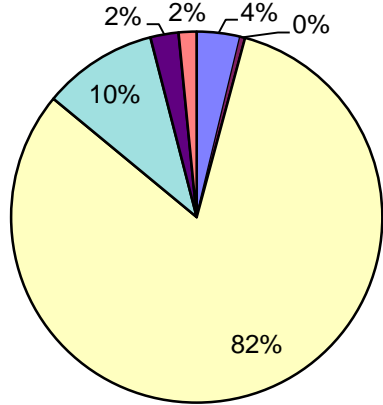
Large Business Energy Solutions



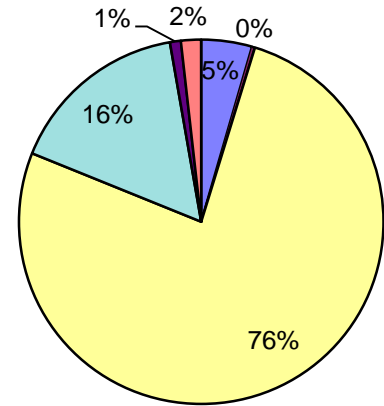
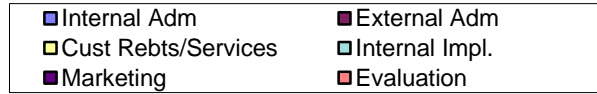
Small Business Energy Solutions



Total Residential Programs



Total Non-Residential Programs



Total Residential and Non-Residential Programs

